



New Infinite Balun, Warped Half-Wavelength Dual Quadrifilar Helix Antennas with Better Gain & C/N (45 to 47), High Multipath Rejection, Broader Beamwidth (150 Deg), and Higher Front/Back Ratio (15dB) For Handheld, Mobile, UAV, Light Weight, and High Degree of Movement Applications

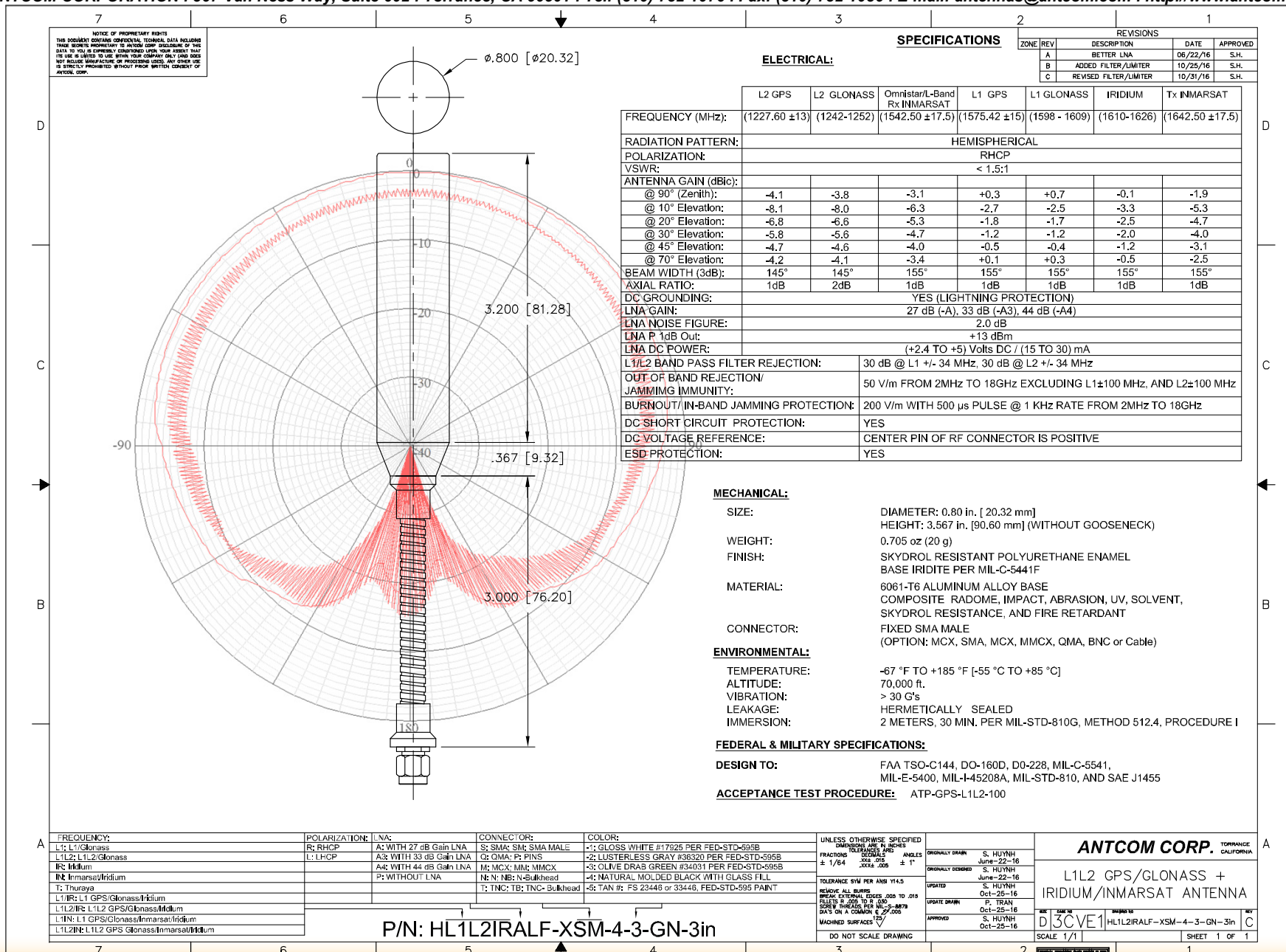
L1L2 GPS/Glonass + Iridium/Inmarsat Antennas

P/N: HL1L2IRALF-XSM-4-3-GN-3in

FAA Approved Facility



ANTCOM CORPORATION . 367 Van Ness Way, Suite 602 . Torrance, CA 90501 . Tel: (310) 782-1076 . Fax: (310) 782-1086 . E-mail: antennas@antcom.com . http://www.antcom.com



Antenna Mounts: http://www.antcom.com/documents/catalogs/PeripheralAntennaProducts2.pdf