



FAA Approved Facility

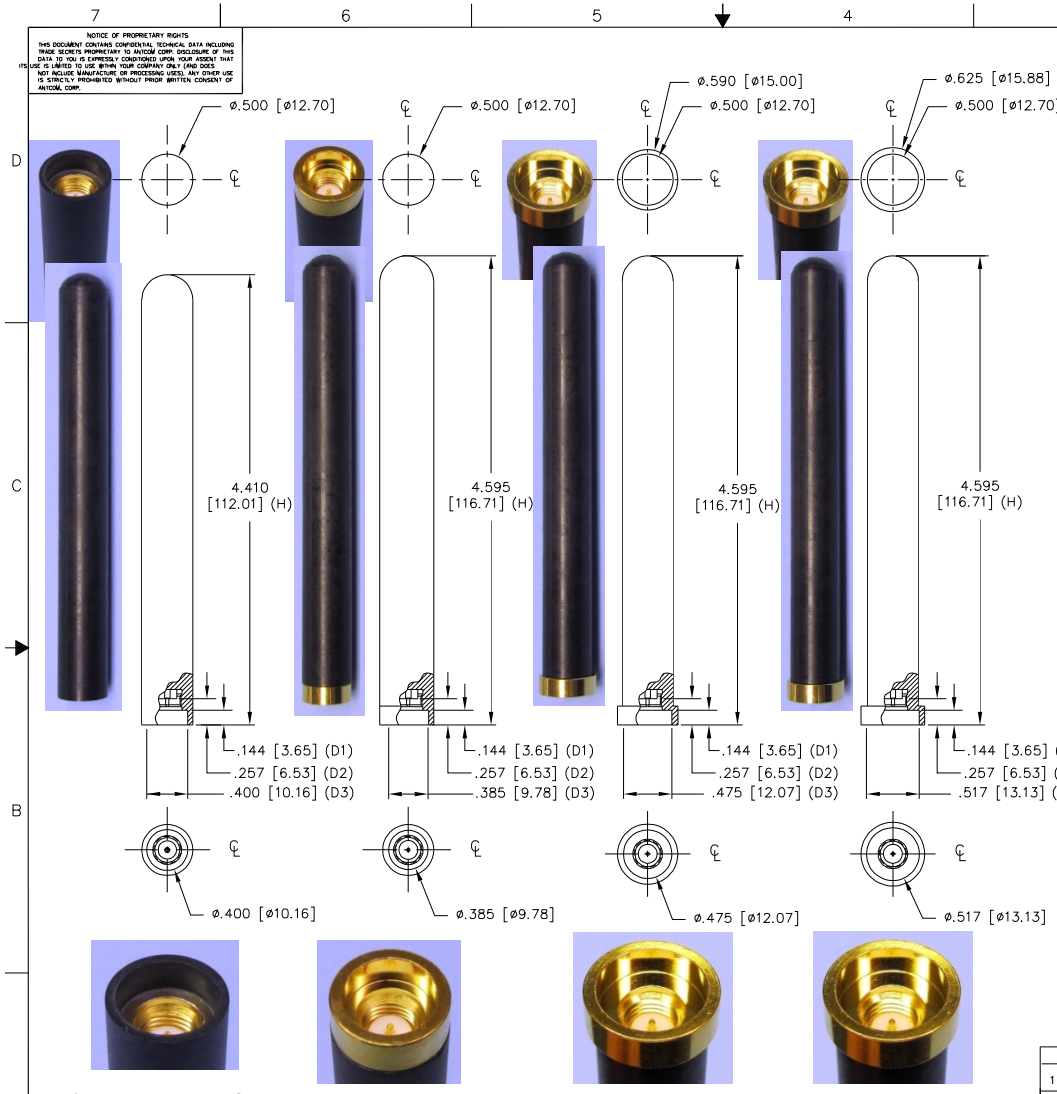
LHCP or RHCP S-Band Helix Antenna
 (2.00-2.30) GHz: P/N: H-2.00-2.30PL-XSM-4-X (LHCP); P/N: H-2.00-2.30PR-XSM-4-X (RHCP)
 (2.20-2.40) GHz: P/N: H-2.20-2.40PL-XSM-4-X (LHCP); P/N: H-2.20-2.40PR-XSM-4-X (RHCP)
 (2.40-2.50) GHz: P/N: H-2.40-2.50PL-XSM-4-X (LHCP); P/N: H-2.40-2.50PR-XSM-4-X (RHCP)

Other Frequencies, Spring loaded, & Gooseneck Mounting Options are Available; D1, D2, D3, H Dimensions can be Customized

Antenna Mounts/Adapters: <http://www.antcom.com/documents/catalogs/PeripheralAntennaProducts2.pdf>



ANTCOM CORPORATION . 367 Van Ness Way, Suite 602 . Torrance, CA 90501 . Tel: (310) 782-1076 . Fax: (310) 782-1086 . E-mail: antennas@antcom.com . <http://www.antcom.com>



SPECIFICATIONS

REVISIONS		DATE	APPROVED
ZONE	REV	DESCRIPTION	
-	-	-	-

ELECTRICAL: Click Here to View Radiation Patterns:
<http://www.antcom.com/documents/catalogs/S-Band-Helix1.pdf>

FREQUENCY:	
RADIATION PATTERN:	HEMISPHERICAL
POLARIZATION:	LHCP or RHCP
VSWR:	< 1.5:1
IMPEDANCE:	50 ohms
GAIN (ABOVE HORIZONTAL, dBic):	
@ 15° Elevation:	+0.2
@ 20° Elevation:	+0.5
@ 30° Elevation:	+1.2
@ 45° Elevation:	+0.3
AXIAL RATIO @ Zenith:	1.0 dB
POWER HANDLING:	1 Watt
DC GROUNDING:	YES (LIGHTNING PROTECTION)
OPTICAL (ACTIVE):	
LNA GAIN:	10 dB - A1, 20 dB - A2
LNA NOISE FIGURE:	2.2 dB
LNA DC POWER:	(+2.5 to +30) Volts DC, < 38 mA FROM Rx RF CON.

MECHANICAL:

SIZE: DIAMETER: 0.50 in. [12.70 mm]
 HEIGHT: 4.41 in. [112.0 mm] For (-3)
 HEIGHT: 4.60 in. [116.7 mm] For (-0, -1 & -2)

WEIGHT: 0.92 oz (26 g)

FINISH: SKYDROL RESISTANT POLYURETHANE ENAMEL, BASE IRIDITE PER MIL-C-5441

COLOR: See Below Description

MATERIAL: 6061-T6 ALUMINUM ALLOY BASE COMPOSITE RADOME, IMPACT, ABRASION, UV, SOLVENT, SKYDROL RESISTANCE, AND FIRE RETARDANT

CONNECTOR: SMA MALE

ENVIRONMENTAL:

TEMPERATURE: -67 °F TO +185 °F [-55 °C TO +85 °C]
 ALTITUDE: 70,000 ft.
 VIBRATION: > 30 G's
 LEAKAGE: HERMETICALLY SEALED

FEDERAL & MILITARY SPECIFICATIONS:

DESIGN TO: FAA TSO-C144, DO-160D, DO-228, MIL-A-8625F, MIL-E-5400, MIL-I-45208A, MIL-STD-810, AND SAE J1455

1. DIMENSIONS IN BRACKETS ARE IN MILLIMETERS [mm]
 NOTES: UNLESS OTHERWISE SPECIFIED:

FREQUENCY (GHz):	LNA:	POLARIZATION:	CONNECTOR:
2.20 - 2.30	A1: 10 dB	R: RHCP	S: SMA Female Bulkhead
2.20 - 2.40	A2: 20 dB	L: LHCP	SM: SMA Male
2.00 - 2.50	P: PASSIVE		T: TNC Female Bulkhead
2.40 - 2.50			TM: TNC Male
X.XX - Y.YY			

P/N: H-X.XX-Y.YYPL-XSM-4-X

QUANTITY	DESCRIPTION	PART NO.	MATERIAL	FINISH	ITEM NO.
1	1	-	-	-	1
PARTS LIST					
UNLESS OTHERWISE SPECIFIED					
DIMENSIONS ARE IN INCHES					
FRACTIONS: 1/64, 1/32, 1/16, 1/8, 1/4, 3/8, 1/2, 5/8, 3/4, 7/8, 1					
DECIMALS: .005, .010, .015, .020, .030, .040, .050, .060, .070, .080, .090, .100, .125, .150, .175, .200, .250, .300, .350, .400, .450, .500, .550, .600, .650, .700, .750, .800, .850, .900, .950, 1.000					
TOLERANCE: .0005 PER ANSI Y14.5					
REMOVE ALL BURRS					
BREAK ALL SHARP EDGES .005 TO .010					
HOLD TO .0005 PER MIL-S-8879					
DITS ON A COLUMN: .05, .005					
MACHINED SURFACES: .0005					
DO NOT SCALE DRAWING					

ORIGINAL DRAWN	S. HUYNH	Feb-23-04
ORIGINAL DESIGNED	S. HUYNH	Feb-23-04
UPDATED	S. HUYNH	Dec-11-13
UPDATE DRAWN	P. Tron	Dec-11-13
APPROVED	S. HUYNH	Dec-11-13

ANTCOM CORP.		TORRANCE, CALIFORNIA
HANDHELD S-Band RHCP OR LHCP HELIX ANTENNA		
DATE	REV	DESCRIPTION
06/30/2013	1	H-X.XX-Y.YYPL-XSM-4-X
SCALE 1/1		SHEET 1 OF 1