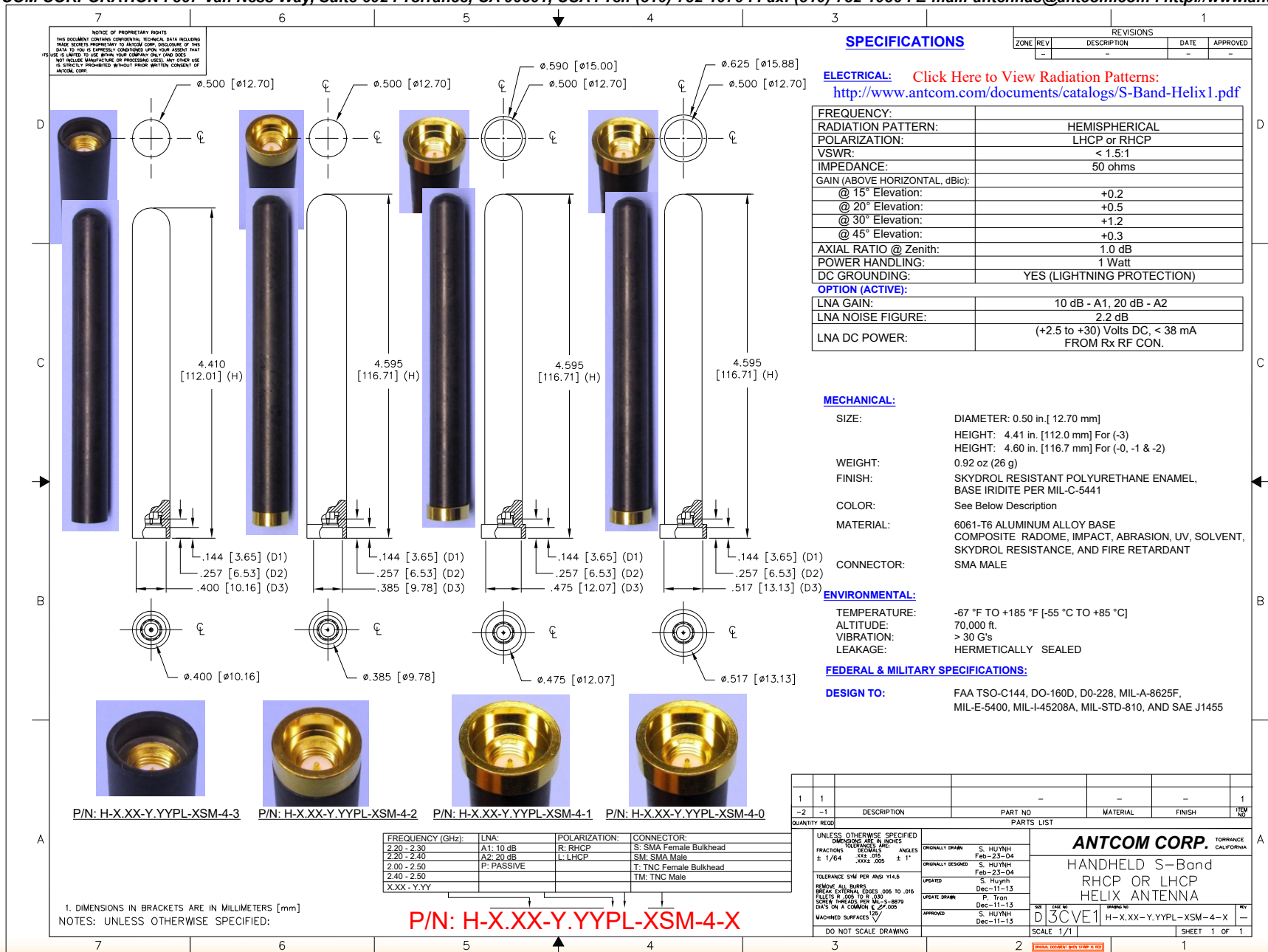


**LHCP or RHCP S-Band Helix Antenna**  
 (2.00-2.30) GHz: P/N: H-2.00-2.30PL-XSM-4-X (LHCP); P/N: H-2.00-2.30PR-XSM-4-X (RHCP)  
 (2.20-2.40) GHz: P/N: H-2.20-2.40PL-XSM-4-X (LHCP); P/N: H-2.20-2.40PR-XSM-4-X (RHCP)  
 (2.40-2.50) GHz: P/N: H-2.40-2.50PL-XSM-4-X (LHCP); P/N: H-2.40-2.50PR-XSM-4-X (RHCP)



Other Frequencies, Spring loaded, & Gooseneck Mounting Options are Available; D1, D2, D3, H Dimensions can be Customized

ANTCOM CORPORATION . 367 Van Ness Way, Suite 602 . Torrance, CA 90501, USA . Tel: (310) 782-1076 . Fax: (310) 782-1086 . E-mail: [antennas@antcom.com](mailto:antennas@antcom.com) . <http://www.antcom.com>



NMO Connector Option is Now Available for Some Antennas