



FAA Approved Facility

New Embedded High Gain Array Rx/Tx-Thuraya or Inmarsat/Iridium Antenna,

P/N: G7-2X3GL1RxTxT-P-XS-X (LHCP, Thuraya)

P/N: G7-2X3GL1RxTxIN-P-XS-X (RHCP, Inmarsat/Iridium)

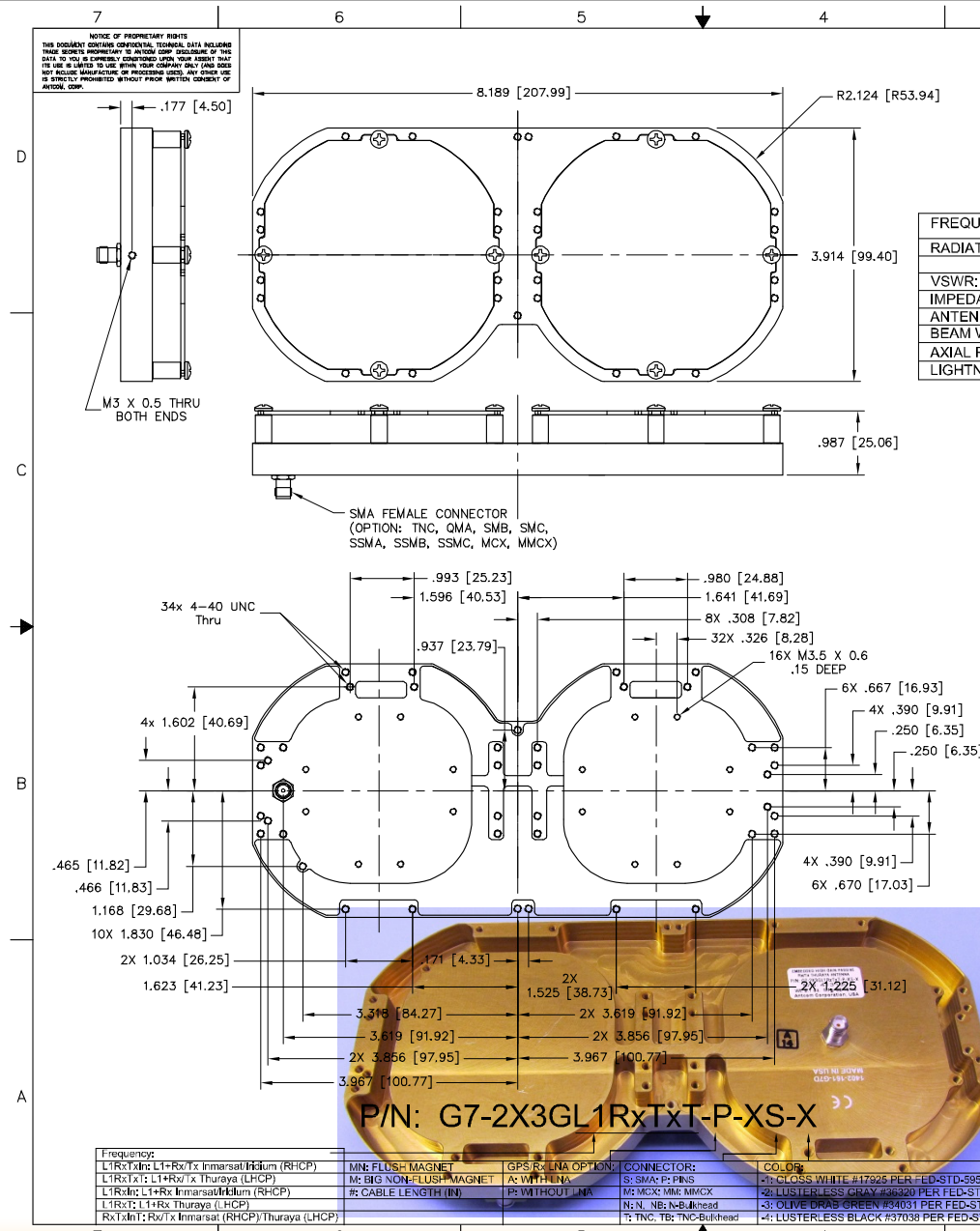
For Mechanically Steered Array Antenna

Antenna Mounts/Adapters: <http://www.antcom.com/documents/catalogs/PeripheralAntennaProducts2.pdf>



ANTCOM CORPORATION . 367 Van Ness Way, Suite 602 . Torrance, CA 90501 . Tel: (310) 782-1076 . Fax: (310) 782-1086 . E-mail: antennas@antcom.com . <http://www.antcom.com>

NOTICE OF PROPRIETARY RIGHTS
THIS DOCUMENT CONTAINS CONFIDENTIAL TECHNICAL INFORMATION. THIS DOCUMENT IS PROPRIETARY TO ANTCOM CORP. DISCLOSURE OF THIS DATA TO ANY OTHER PARTY IS PROHIBITED. ANY UNLAWFUL USE OF THIS DATA IS LIMITED TO USE WITHIN YOUR COMPANY ONLY AND DOES NOT INCLUDE MANUFACTURE OR REPRODUCTION. ANY OTHER USE IS STRICTLY PROHIBITED WITHOUT PRIOR WRITTEN CONSENT OF ANTCOM CORP.



SPECIFICATIONS

REVISIONS				
ZONE	REV	DESCRIPTION	DATE	APPROVED
A		HOLLOWED BOTTOM FOR WEIGHT REDUCTION	02/19/14	S.H.

	Rx Inmarsat OmniStar, L6 Galileo, B1 Compass (RHCP), or Rx-Thuraya (LHCP)	L1 GPS, E1, E2 Galileo, L1 IRNSS (RHCP)	Tx-Inmarsat (RHCP) or Tx-Thuraya (LHCP)
FREQUENCY:	(1542.5 ± 17.5) MHz	(1575 ± 17) MHz	(1642.5 ± 17.5) MHz
RADIATION PATTERN:	HEMISPHERICAL		
VSWR:	< 1.5:1	< 1.5:1	< 1.5:1
IMPEDANCE:	50 ohms	50 ohms	50 ohms
ANTENNA GAIN (dBic):	9dBic	9dBic	9dBic
BEAM WIDTH (3dB):	65 Deg.	65 Deg.	65 Deg.
AXIAL RATIO:	1 dB		
LIGHTNING PROTECTION:	DC GROUNDING		

MECHANICAL:

SIZE: WIDTH: 3.91in. [99 mm], LENGTH: 8.19in. [208 mm], HEIGHT: .98in. [25.1 mm]

WEIGHT: 8.6oz. (244g)

FINISH: SKYDROL RESISTANT POLYURETHANE ENAMEL BASE IRIDIUM PER MIL-C-5541F

MATERIAL: 6061-T6 ALUMINUM ALLOY BASE COMPOSITE RADOME, IMPACT, ABRASION, UV, SOLVENT, SKYDROL RESISTANCE, AND FIRE RETARDANT

CONNECTOR: SMA FEMALE TNC, QMA, SMB, SMC, SSMA, SSMB, SSMC, MCX, MMCX

ENVIRONMENTAL:

TEMPERATURE: -67 °F TO +185 °F [-55 °C TO +85 °C]

ALTITUDE: 70,000 ft.

VIBRATION: > 30 G's

LEAKAGE: HERMETICALLY SEALED

FEDERAL & MILITARY SPECIFICATIONS:

DO-160D, DO-228, MIL-C-5541, MIL-E-5400, MIL-I-45208A, MIL-STD-810, AND SAE J1455

ACCEPTANCE TEST PROCEDURE:

ATP-GPS-L1L2-100

QTY	DESCRIPTION	PARTS LIST	PART NO	REV
1				2
1				1

UNLESS OTHERWISE SPECIFIED DIMENSIONS ARE IN INCHES FRACTIONS TO DECIMALS ANGLES ± 1/64 .0002 .005 ± 1°		ORIGINALLY DESIGNED BY S. HUYNH MAY-14-12	ANTCOM CORP. TORRANCE, CALIFORNIA Rx/Tx- Thuraya L1 GPS Antenna
TOLERANCE SYM PER ANSI Y14.5 REMOVE ALL SHARP BREAK EXTERNAL EDGES .005 TO .015		ORIGINALLY DESIGNED BY S. HUYNH MAY-14-12	
2- LUSTERLESS GRAY #36320 PER FED-STD-595B		UPDATED BY S. HUYNH OCT-30-13	
3- OLIVE DRAB GREEN #34031 PER FED-STD-595B		UPDATE DRAWN BY P. TRAN OCT-30-13	
4- LUSTERLESS BLACK #37038 PER FED-STD-595B		APPROVED BY S. HUYNH OCT-30-13	SHEET NO: D 3CVE1 PART NO: G7-2X3GL1RxTxT-P-XS-X SCALE: 1/1 SHEET 1 OF 1

P/N: G7-2X3GL1RxTxT-P-XS-X

Frequency: L1RxTxIn: L1+RxTx Inmarsat/Iridium (RHCP)	MN: FLUSH MAGNET	GPS/Rx LNA OPTION: A: WITH LNA	CONNECTOR: S: SMA; P: PINS	CO. DR: 1: CLOSS WHITE #17925 PER FED-STD-595B
L1RxTxIn: L1+RxTx Thuraya (LHCP)	M: BIG NON-FLUSH MAGNET	P: WITHOUT LNA	M: MCX; MM: MMCX	2: LUSTERLESS GRAY #36320 PER FED-STD-595B
L1RxTxIn: L1+Rx Inmarsat/Iridium (RHCP)	#: CABLE LENGTH (IN)		N: N; NB: IN-Bulkhead	3: OLIVE DRAB GREEN #34031 PER FED-STD-595B
L1RxTxIn: L1+Rx Thuraya (LHCP)			T: TNC; TB: TNC-Bulkhead	4: LUSTERLESS BLACK #37038 PER FED-STD-595B
RxTxIn: RxTx Inmarsat (RHCP) Thuraya (LHCP)				

NMO Connector Option is Now Available for Some Antennas