



FAA Approved Facility

Antcom's Active G5 L1/L2 Glonass + L1/L2 GPS + OmniStar/TerraStar Antenna

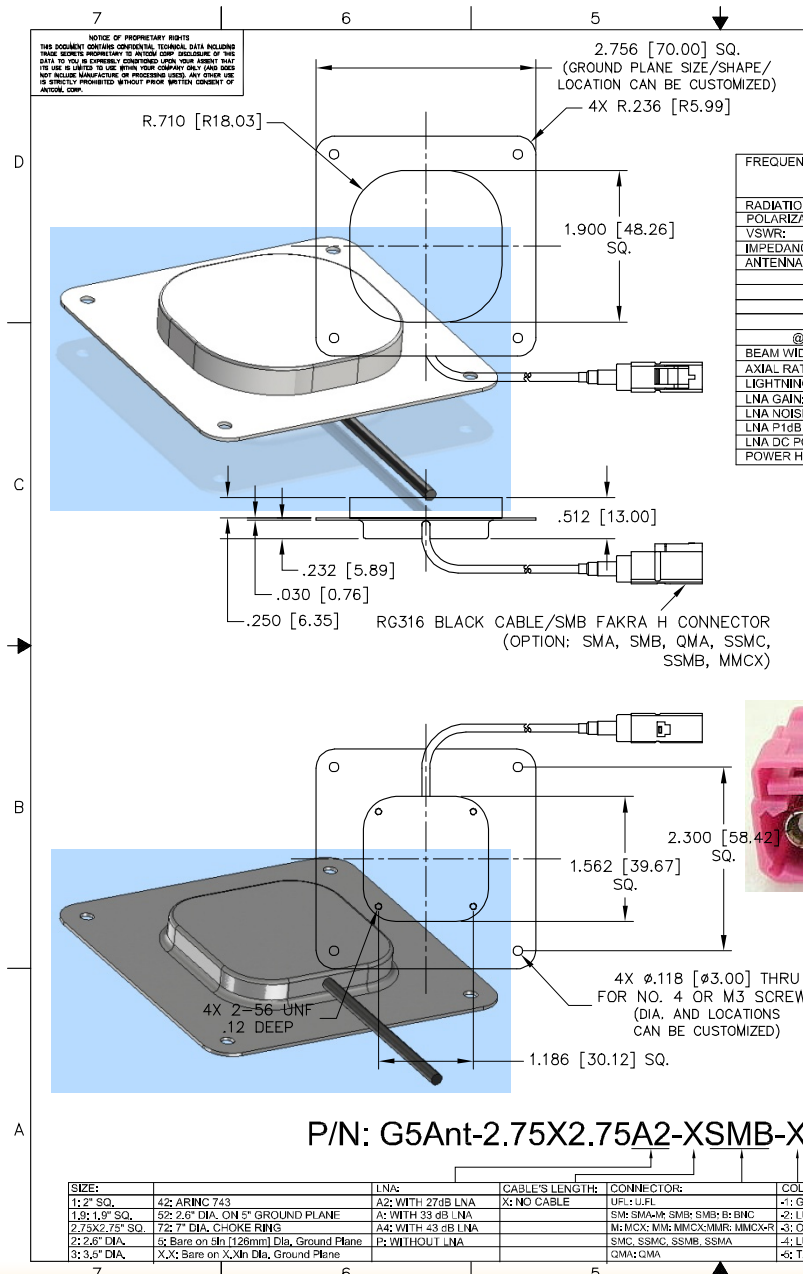
P/N: G5Ant-2.75X2.75A2-XSMB-X-OEM2

OEM Version on 2.75in Square Ground Plane for Automotive Applications



Antenna Mounts: <http://www.antcom.com/documents/catalogs/PeripheralAntennaProducts2.pdf>

ANTCOM CORPORATION . 367 Van Ness Way, Suite 602 . Torrance, CA 90501 . Tel: (310) 782-1076 . Fax: (310) 782-1086 . E-mail: antennas@antcom.com . <http://www.antcom.com>



NOTICE OF PROPRIETARY RIGHTS
 THIS DOCUMENT CONTAINS CONFIDENTIAL, TRADE SECRET, OR PROPRIETARY INFORMATION. THE USER IS LIMITED TO THE USE OF THIS DOCUMENT FOR THE PURPOSES OF THE PRODUCT FOR WHICH IT WAS PROVIDED. ANY OTHER USE IS STRICTLY PROHIBITED WITHOUT WRITTEN CONSENT OF ANTCOM CORP.

SPECIFICATIONS		REVISIONS		
ZONE	REV	DESCRIPTION	DATE	APPROVED

	ELECTRICAL:					
	L5 GPS E5, E5a, E5b Galileo L5 IRNSS	L2 GPS B2 Compass	L2 GLONASS E6 Galileo B3 Compass	OmniSTAR / L-Band L6 Galileo B1 Compass	L1 GPS E1, E2 Galileo L1 IRNSS	L1 GLONASS
FREQUENCY:	1176.45 ± 12 MHz 1164.45 - 1219.14 MHz 1176.45 ± 15 MHz	1227.60 ± 12 MHz 1207.14 ± 10 MHz	1252.50 ± 7.5 MHz 1266.75 - 1290.75 MHz 1268.52 ± 10 MHz	1542.50 ± 14.0 MHz 1542.50 ± 5.0 MHz 1561.098 ± 10 MHz	1575.42 ± 15.0 MHz 1575.42 ± 17.0 MHz 1575.42 ± 12.0 MHz	(1598 - 1606) MHz
RADIATION PATTERN:	HEMISPHERICAL					
POLARIZATION:	RHCP	RHCP	RHCP	RHCP	RHCP	RHCP
VSWR:	< 2.0:1	< 2.0:1	< 2.0:1	< 2.0:1	< 2.0:1	< 2.0:1
IMPEDANCE:	50 ohms	50 ohms	50 ohms	50 ohms	50 ohms	50 ohms
ANTENNA GAIN (dBi):						
@ 90° (ZENITH):	- 4	+ 3.2	+ 2.1	+ 1.2	+ 4.1	+ 3.0
@ 10° Elevation:	- 10	- 3.3	- 4.5	- 7.4	- 4.5	- 5.8
@ 20° Elevation:	- 9	- 1.7	- 3.2	- 5.8	- 2.9	- 4.1
@ 30° Elevation:	- 8	- 0.8	- 2.4	- 4.1	- 1.2	- 2.4
@ 60 - 90° Elevation:	> - 5	> 2.3	> 0.9	> - 0.3	> + 2.6	> + 1.6
BEAM WIDTH (3dB):	90 Deg.	95 Deg.	90 Deg.	75 Deg.	80 Deg.	80 Deg.
AXIAL RATIO:	3 dB	1 dB		1 dB	1 dB	1 dB
LIGHTNING PROTECTION:	DC GROUNDING					
LNA GAIN:	27 dB	27 dB	27 dB	27 dB	27 dB	27 dB
LNA NOISE FIGURE:	2.8 dB	2.8 dB	2.8 dB	2.8 dB	2.8 dB	2.8 dB
LNA P1dB OUT:	+13 dBm	+13 dBm	+13 dBm	+13 dBm	+13 dBm	+13 dBm
LNA DC POWER:	(2.5 - 24)V @ <12mA					
POWER HANDLING:	1 Watt CW, Optional 10 Watts 1 Microsec Pulse (-AL-)					

MECHANICAL:
 SIZE: 2.756 in [70.00 mm] SQ.
 HEIGHT: 0.512 in [13.00 mm]
 WEIGHT: < 3.2 oz. (90 g)
 FINISH: SKYDROL RESISTANT POLYURETHANE ENAMEL
 BASE IRIDITE PER MIL-C-5541F CLASS 1A
 MATERIAL: 6061-T6 ALUMINUM ALLOY BASE
 COMPOSITE RADOME, IMPACT, ABRASION, UV, SOLVENT, SKYDROL RESISTANCE, AND FIRE RETARDANT
 CONNECTOR: CABLE/SMB-M FAKRA H CONNECTOR (OPTION: SMA, SMB, QMA, SSMC, SMMB, MMCX)
ENVIRONMENTAL:
 TEMPERATURE: -67 °F TO +221 °F [-55 °C TO +105 °C]
 70,000 ft.
 VIBRATION: > 30 G's
 HERMETICALLY SEAL
FEDERAL & MILITARY SPECIFICATIONS:
 SAE J1455 (AUTOMOTIVE), DO-160D (ENV/EMI), DO-228 (ENV/EMI), MIL-C-5541F, MIL-PRF-39012 (CONN), MIL-STD-810G (ENV/EMI), MIL-HDBK-5400 (ELEC), MIL-STD-464C (ELEC MAG), MIL-STD-130N-1 (ID), MIL-STD-889B (METAL), RCC-319-14 (TERMINATION) , RCC-324-01(SAFETY), FAA TSO-C144, MIL-STD-1472 (DOD), MIL-I-45208A, AND NAS411-1 (HAZ)

ACCEPTANCE TEST PROCEDURE: ATP-GPS-L1L2-100

SIZE:	LNA:	CABLE'S LENGTH:	CONNECTOR:	COLOR:
1: 2" SQ.	42: ARINC 743	X: NO CABLE	UR: J.U.F.	-1: GLOSS WHITE #17925 PER FED-STD-595B
1.8: 1.9" SQ.	32: 2.6" DIA. ON 5" GROUND PLANE	A: WITH 33 dB LNA	SM: SMA/M; SMB: SMB; B: BNC	-2: LUSTERLESS GRAY #36320 PER FED-STD-595B
2: 2.75X2.75" SQ.	72: 7" DIA. G-CHOKE RING	A4: WITH 43 dB LNA	M: M; X: M; MMCX: MMCX; MMCOR: MMCOR	-3: OLIVE DRAB GREEN #34031 PER FED-STD-595B
2: 2.6" DIA.	X: Bare on 5th [126mm] Dia. Ground Plane	P: WITHOUT LNA	QMA: QMA	-4: LUSTERLESS BLACK #37038 PER FED-STD-595B
3: 3.6" DIA.	X,X: Bare on X, Xn Dia. Ground Plane			-5: TAN #33446 PER FED-STD-595B

P/N: G5Ant-2.75X2.75A2-XSMB-X-OEM2

QUANTITY REQD	DESCRIPTION	PARTS LIST	PART NO	FINISH	HTG
					2
					1

UNLESS OTHERWISE SPECIFIED DIMENSIONS ARE IN INCHES		ANTCOM CORP. TORRANCE, CALIFORNIA	
FRACTIONS TO BE DECIMALS	ANGLES	ORIGINALLY DRAWN	S. HUYNH Mar-16-15
± 1/64	± 1°	ORIGINALLY DESIGNED	S. HUYNH Mar-16-15
TOLERANCE 5TH DIGIT PER ANSI Y14.5		UPDATED	S. HUYNH Mar-23-16
RELIEVE ALL BURRS		PREPARE EXTERNAL VIEWS TO 0.010	P. TRAM Mar-23-16
SOB P. 002, 15, 16, 18, 19, 20, 21, 22, 23, 24, 25 ON A COMMON 1/2" DIA.		UPDATE DRAWN	S. HUYNH Mar-23-16
MACHINED SURFACES		APPROVED	S. HUYNH Mar-23-16
DO NOT SCALE DRAWING			