



FAA Approved Facility

Active L1/L2 Glonass + L1/L2 GPS + OmniStar/TerraStar Antenna

P/N: G5Ant-1.9A-XS-X or G5Ant-1.9A-XS-2-RoHS

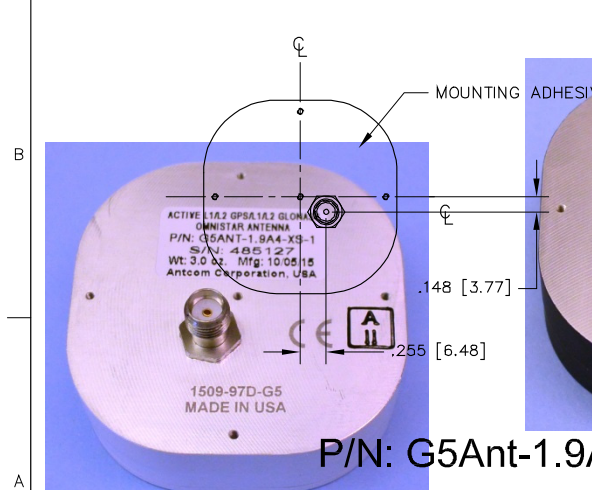
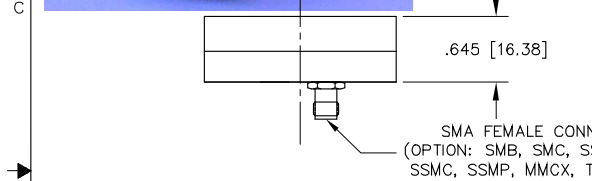
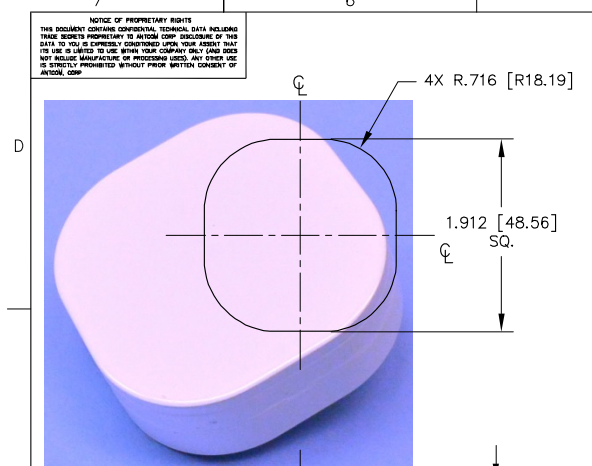
1.9 in Square Back Mount Configuration. Other Connector, Cable and Color are Available

Antenna Mounts: <http://www.antcom.com/documents/catalogs/PeripheralAntennaProducts2.pdf>



ANTCOM CORPORATION . 367 Van Ness Way, Suite 602 . Torrance, CA 90501 . Tel: (310) 782-1076 . Fax: (310) 782-1086 . E-mail: antennas@antcom.com . <http://www.antcom.com>

“-HF” for High Iridium/Inmarsat/Thuraya-Rejection Front End Filter Option: -22dB@1616MHz, -34dB@1625-1660MHz
“-HFO” for Additional OmniStar/TerraStar Rejection: -27dB@1545MHz



SIZE:	LNA:	MALE CONNECTOR:	COLOR:
1: 2" SQ.	A: WITH LNA (33 dB)	S: SMA; Q: QMA; P: PINS	-1: GLOSS WHITE #17925 PER FED-STD-595B
1.9: 1.9" SQ.	A2: WITH LNA (20 dB)	M: MCX; MM: MMCX, SMB	-2: LUSTERLESS GRAY #36320 PER FED-STD-595B
2: 2.6" DIA.	A4: WITH LNA (40 dB)	SSMA, SSMB, SSMC, SSMP	-3: CAMO GREEN #34094 PER FED-STD-595B
3: 3.5" DIA.	P: WITHOUT LNA	T, TB: TNC, TNC-Bulkhead	-4: LUSTERLESS BLACK #37038 PER FED-STD-595B
4: MINI ARINC		X: X in. CABLE	-5: DESERT TAN #33446 PER FED-STD-595B

ELECTRICAL:	
FREQUENCY:	L5 GPS E5, E5a, E5b, Galileo L5 IRNSS: 1176.45 ± 12.0 MHz, 1164.45 - 1219.14 MHz, 1176.45 ± 15.0 MHz; L2 GPS B2 Compass: 1227.60 ± 12.0 MHz, 1207.14 ± 10.0 MHz; L2 GLONASS E6 Galileo B3 Compass: 1252.50 ± 7.5 MHz, 1266.75 - 1290.75 MHz, 1268.52 ± 10.0 MHz; OmniSTAR / L-Band L6 Galileo B1 Compass: 1542.50 ± 14.0 MHz, 1542.50 ± 5.0 MHz, 1561.098 ± 10.0 MHz; L1 GPS E1, E2 Galileo L1 IRNSS: 1575.42 ± 15.0 MHz, 1575.42 ± 17.0 MHz, 1575.42 ± 12.0 MHz; L1 GLONASS: 1609 ± 7.0 MHz
RADIATION PATTERN:	HEMISPHERICAL
POLARIZATION:	RHCP
VSWR:	< 2.0:1
IMPEDANCE:	50 ohms
ANTENNA GAIN (dBi):	Free Space 5in G.P: @ 90° (ZENITH): -7, -3; @ 10° Elevation: -13, -10; @ 20° Elevation: -11, -9; @ 30° Elevation: -10, -8; @ 60 - 90° Elevation: > -8, > -5
BEAM WIDTH (3dB):	105 Deg., 100 Deg., 105 Deg., 105 Deg., 105 Deg., 90 Deg.
AXIAL RATIO:	1.5 dB, 3 dB, 1 dB, 1 dB, 1 dB, 1 dB
LIGHTNING PROTECTION:	LNA GAIN: 35 dB; LNA NOISE FIGURE: 3.0 dB; LNA P1dB Out: +13 dBm; LNA DC POWER: 2.5V/20mA, 3V/29mA, 3.3V/35mA, (2.5-24V)/<50mA; POWER HANDLING: 1 Watt CW, Optional: 10 Watts 1 Microsec Pulse (-AL-)

SPECIFICATIONS	
MECHANICAL:	SIZE: LENGTH = 1.912 in. [48.56 mm], WIDTH = 1.912 in. [48.56 mm], HEIGHT: 0.645 in. [16.38 mm]; WEIGHT: 2.96 oz. (84 g); FINISH: SKYDROL RESISTANT POLYURETHANE ENAMEL BASE IRIDITE PER MIL-C-5541; MATERIAL: 6061-T6 ALUMINUM ALLOY BASE COMPOSITE RADOME, IMPACT, ABRASION, UV, SOLVENT, SKYDROL RESISTANCE, AND FIRE RETARDANT; CONNECTOR: SMA FEMALE (OPTION: SMB, SMC, SSMA, SSMA, SSMC, SSMP, MMCX, TNC, OR N); ENVIRONMENTAL: TEMPERATURE: -67 °F TO +185 °F [-55 °C TO +85 °C]; ALTITUDE: 70,000 ft.; VIBRATION: > 30 G's; LEAKAGE: HERMETICALLY SEAL; FEDERAL & MILITARY SPECIFICATIONS: DESIGN TO: FAA TSO-C144, DO-160D, D0-228, MIL-C-5541, MIL-E-5400, MIL-I-45208A, MIL-STD-810, AND SAE J1455; ACCEPTANCE TEST PROCEDURE: ATP-GPS-L1L2-100

1	ADHESIVE GASKET	12345G-3M-1G	-	-	-	2
1	DESCRIPTION	PART NO	SPECIFICATION	MATERIAL	FINISH	REV
-2						NO
QUANTITY REQ. PARTS LIST						
UNLESS OTHERWISE SPECIFIED DIMENSIONS ARE IN INCHES FRACTIONS ARE TO BE USED UNLESS OTHERWISE NOTED ± 1/64 .0004 .005 ± .1						
TOLERANCE SW PER ANSI Y14.5						
MACHINED SURFACES PER ASME Y14.5						
DO NOT SCALE DRAWING						
APPROVED	S. HUYNH	Sept-22-15	ANTCOM CORP. TORRANCE CALIFORNIA			
DATE	1509-97D-G5	1.9in Square, L1/L2 Glonass + L1/L2 GPS + OmniStar G5 ANTENNA	BY			
SCALE	1/1		SHEET 1 OF 1			

NMO Connector Option is Now Available for Some Antennas