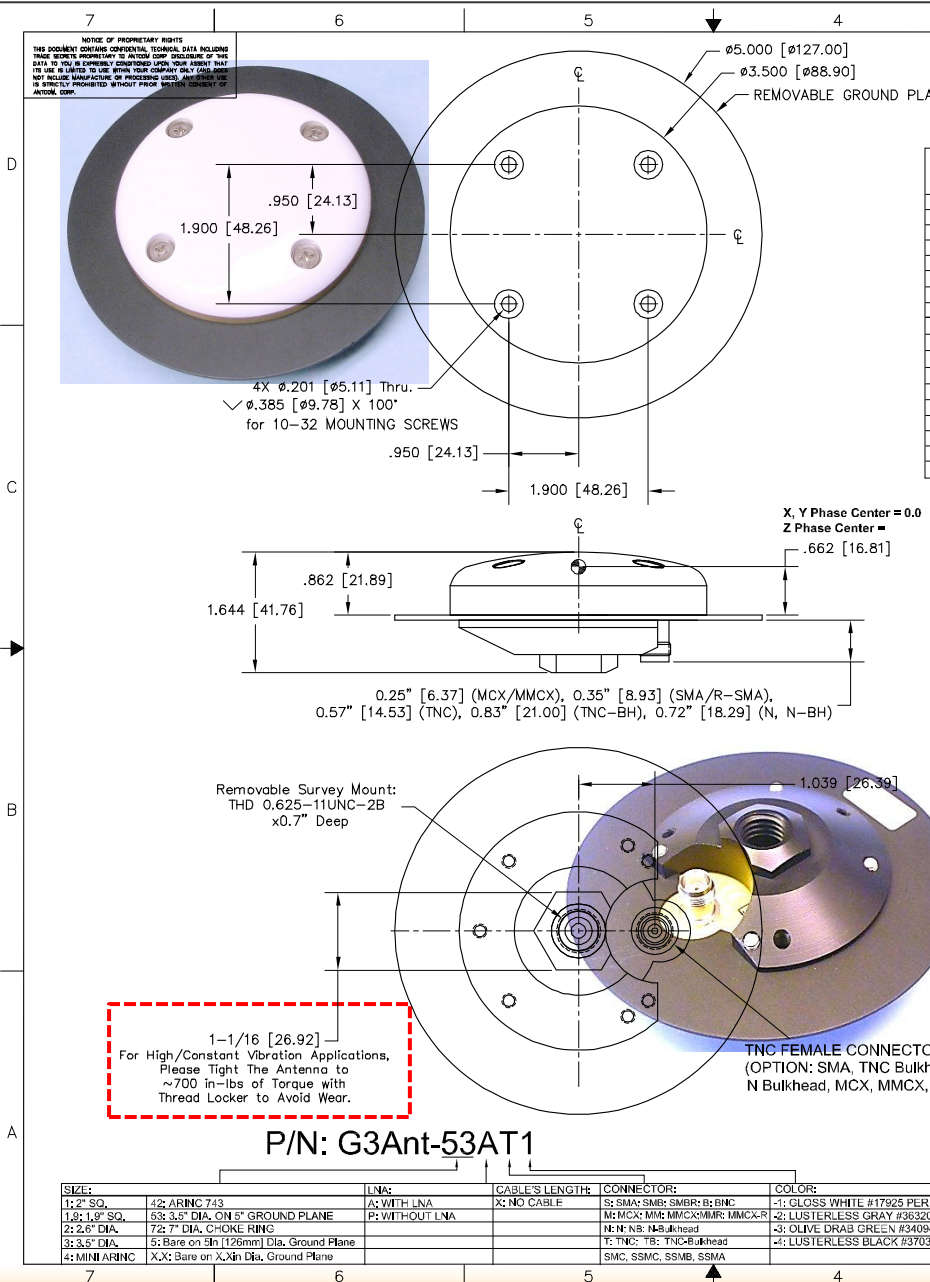


ANTCOM CORPORATION . 367 Van Ness Way, Suite 602 . Torrance, CA 90501 . Tel: (310) 782-1076 . Fax: (310) 782-1086 . E-mail: [antennas@antcom.com](mailto:antennas@antcom.com) . <http://www.antcom.com>

"-HF" for High Iridium/Inmarsat/Thuraya-Rejection Front End Filter Option: **-22dB@1616MHz**, **-34dB@1625-1660MHz**  
 "-HFO" for Additional Omnistar Rejection: **-27dB@1545MHz**



**SPECIFICATIONS**

ZONE	REVISIONS			
	REV	DESCRIPTION	DATE	APPROVED
A		ELECTRICAL SPECS	06/18/12	S.H
B		NEW MOUNT	06/23/15	S.H

	OmniSTAR / L-Band L6 Galileo E1 Compass	L1 GPS E1, E2 Galileo L1 IRNSS	L1 GLONASS
	<b>FREQUENCY:</b>	1542.50 ± 14.0 MHz 1542.50 ± 0.5 MHz 1561.098 ± 10 MHz	1575.42 ± 15.0 MHz 1575.42 ± 17.0 MHz 1575.42 ± 12.0 MHz
<b>RADIATION PATTERN:</b>	HEMISPHERICAL		
<b>POLARIZATION:</b>	RHCP	RHCP	RHCP
<b>VSWR:</b>	< 2.0:1	< 2.0:1	< 2.0:1
<b>IMPEDANCE:</b>	50 ohms	50 ohms	50 ohms
<b>ANTENNA GAIN (dBic):</b>			
@ 90 ° (ZENITH):	+ 2.9	+ 4.7	+ 2.9
@ 10 ° Elevation:	- 4.1	- 2.3	- 4.1
@ 20 ° Elevation:	- 3.6	- 1.3	- 3.8
@ 30 ° Elevation:	- 1.8	+ 0.5	- 1.1
@ 60 - 90 ° Elevation:	> + 0.9	> + 3.0	> + 1.9
<b>BEAM WIDTH (3dB):</b>	82 Deg.	86 Deg.	90 Deg.
<b>AXIAL RATIO:</b>	1dB	.5 dB	1.0 dB
<b>LIGHTNING PROTECTION:</b>	DC GROUNDING		
<b>LNA GAIN:</b>	33 dB	33 dB	33 dB
<b>LNA NOISE FIGURE:</b>	3.0 dB	3.0 dB	3.0 dB
<b>LNA P1dB Out:</b>	+13 dBm	+13 dBm	+13 dBm
<b>LNA DC POWER:</b>	2.5V/20mA, 3V/29mA, 3.3V/35mA, (2.5-24V)/<50mA		
<b>POWER HANDLING:</b>	1 Watt CW, Optional: 10 Watts 1 Microsec Pulse (-AL-)		

**ELECTRICAL:**

**MECHANICAL:**

**SIZE:** DIAMETER: 3.50 in. [ 88.90 mm]  
HEIGHT: 0.86 in. [21.89 mm] - (Optional for Passive)

**WEIGHT:** 14.5 oz. (411 g)

**FINISH:** SKYDROL RESISTANT POLYURETHANE ENAMEL  
BASE IRIDITE PER MIL-C-5541F CLASS 1A

**MATERIAL:** 6061-T6 ALUMINUM ALLOY BASE  
COMPOSITE RADOME, IMPACT, ABRASION, UV, SOLVENT, SKYDROL RESISTANCE, AND FIRE RETARDANT

**CONNECTOR:** TNC FEMALE CONNECTOR  
(OPTION: SMA, BNC, TNC Bulkhead, N, N Bulkhead, MCX, MMCX)

**ENVIRONMENTAL:**

**TEMPERATURE:** -67 °F TO +185 °F [-55 °C TO +85 °C]

**VIBRATION:** 70,000 ft.  
> 30 G's  
HERMETICALLY SEAL

**FEDERAL & MILITARY SPECIFICATIONS:**  
FAA TSO-C144, DO-160D, D0-228, MIL-C-5541, MIL-E-5400, MIL-I-45208A, MIL-STD-810, AND SAE J1455

**ACCEPTANCE TEST PROCEDURE:** ATP-GPS-L1L2-100

QUANTITY REQD	DESCRIPTION	PARTS LIST	PART NO	FINISH	TEST NO
4	MOUNTING SCREWS: 10-32, 3/4"		MS24693C274	-	5
1	5" DIA. GROUND PLANE		12G1215P001-B6	-	3
1	SURVEY ANTENNA MOUNT		MTR-3 Rev A	-	2

**ANTCOM CORP.** TORRANCE, CALIFORNIA

OUTLINE DRAWING  
L1 GLONASS/L1GPS/Omnistar  
G3 SURVEY MOUNT ANTENNA

UNLESS OTHERWISE SPECIFIED DIMENSIONS ARE IN INCHES  
FRACTIONS 8/64 TO 3/16 ANGLES 25° ± 1/64 DECIMALS .005 ± .001 ± 1/64 .005 ± .001 ± 1/64

TOLERANCE SURF PER ANSI Y14.5  
REMOVE ALL SQUARE BREAK EXTERNAL EDGES .005 TO .015  
Fillet R .005 TO R .050  
Screw threads per MIL-STD-8879  
DIN 9134 ON A COMMON & 27° OR  
MACHINED SURFACES ✓

DO NOT SCALE DRAWING

DATE: 06/23/15  
DRAWN BY: S. HUYNH  
CHECKED BY: S. HUYNH  
APPROVED BY: S. HUYNH

SCALE: 1/1

SHEET 1 OF 1