

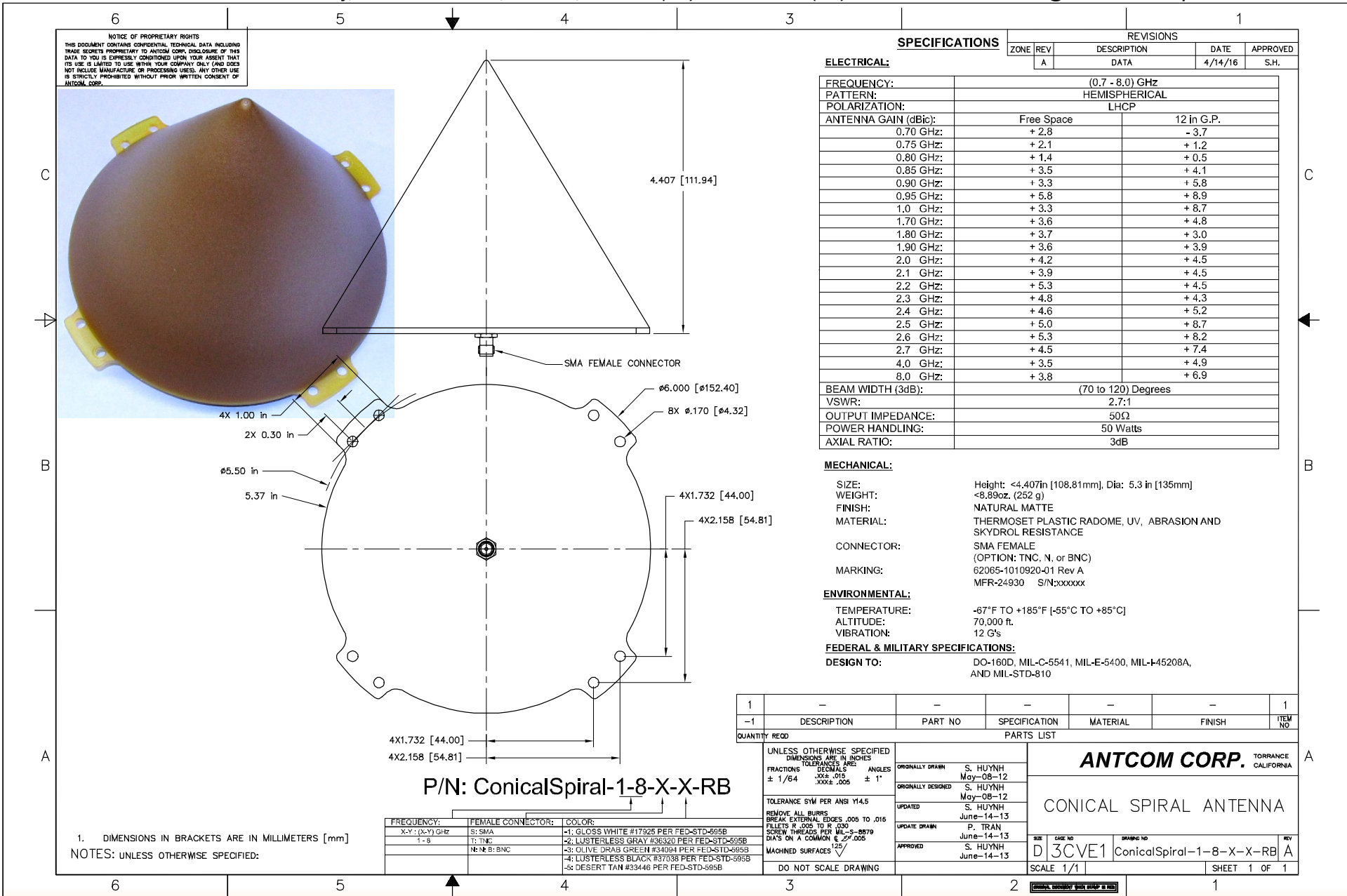


ISO 9001:2008/FAA Approved Facility

(0.7-8.0) GHz Conical Spiral Antenna, P/N: ConicalSpiral-1-8-X-X-RB (LHCP)
 P/N: ConicalSpiral-1-8-X-X-LB (RHCP)
 (5.27" Dia. X 4.41" Height), Bracket Mount Configuration



ANTCOM CORPORATION . 367 Van Ness Way, Suite 602 . Torrance, CA 90501, USA . Tel: (310) 782-1076 . Fax: (310) 782-1086 . E-mail: antennas@antcom.com . http://www.antcom.com



SPECIFICATIONS

REVISIONS				
ZONE	REV	DESCRIPTION	DATE	APPROVED
A		DATA	4/14/16	S.H.

ELECTRICAL:

FREQUENCY:	(0.7 - 8.0) GHz	
PATTERN:	HEMISPHERICAL	
POLARIZATION:	LHCP	
ANTENNA GAIN (dBi):	Free Space	12 in G.P.
0.70 GHz:	+2.8	-3.7
0.75 GHz:	+2.1	+1.2
0.80 GHz:	+1.4	+0.5
0.85 GHz:	+3.5	+4.1
0.90 GHz:	+3.3	+5.8
0.95 GHz:	+5.8	+8.9
1.0 GHz:	+3.3	+8.7
1.70 GHz:	+3.6	+4.8
1.80 GHz:	+3.7	+3.0
1.90 GHz:	+3.6	+3.9
2.0 GHz:	+4.2	+4.5
2.1 GHz:	+3.9	+4.5
2.2 GHz:	+5.3	+4.5
2.3 GHz:	+4.8	+4.3
2.4 GHz:	+4.6	+5.2
2.5 GHz:	+5.0	+8.7
2.6 GHz:	+5.3	+8.2
2.7 GHz:	+4.5	+7.4
4.0 GHz:	+3.5	+4.9
8.0 GHz:	+3.8	+6.9
BEAM WIDTH (3dB):	(70 to 120) Degrees	
VSWR:	2.7:1	
OUTPUT IMPEDANCE:	50Ω	
POWER HANDLING:	50 Watts	
AXIAL RATIO:	3dB	

MECHANICAL:

SIZE: Height: <4.407in [108.81mm], Dia: 5.3 in [135mm]
WEIGHT: <8.89oz. (252 g)
FINISH: NATURAL MATTE
MATERIAL: THERMOSET PLASTIC RADOME, UV, ABRASION AND SKYDROL RESISTANCE
CONNECTOR: SMA FEMALE
 (OPTION: TNC, N, or BNC)
MARKING: 62065-1010920-01 Rev A
 MFR-24930 S/N:xxxxx

ENVIRONMENTAL:
TEMPERATURE: -67°F to +185°F [-55°C TO +85°C]
ALTITUDE: 70,000 ft.
VIBRATION: 12 G's

FEDERAL & MILITARY SPECIFICATIONS:
DESIGN TO: DO-160D, MIL-C-5541, MIL-E-5400, MIL-I-45208A, AND MIL-STD-810

1	-	-	-	-	-	1
-1	DESCRIPTION	PART NO	SPECIFICATION	MATERIAL	FINISH	ITEM NO
QUANTITY REQD		PARTS LIST				
UNLESS OTHERWISE SPECIFIED DIMENSIONS ARE IN INCHES		ORIGINAL DRAWN S. HUYNH May-08-12 ORIGINAL DESIGNED S. HUYNH May-08-12 UPDATED S. HUYNH June-14-13 UPDATE DRAWN P. TRAN June-14-13 APPROVED S. HUYNH June-14-13		ANTCOM CORP. TORRANCE CALIFORNIA CONICAL SPIRAL ANTENNA		
TOLERANCE SYM PER ANSI Y14.5 REMOVE ALL BURRS BREAK EXTERNAL EDGES .005 TO .015 FILETS R .005 TO R .030 SCREW THREADS PER MIL-S-8879 DIA'S ON A COMMON & OF .005 MACHINED SURFACES 125		DO NOT SCALE DRAWING		SCALE 1/1 SHEET 1 OF 1		