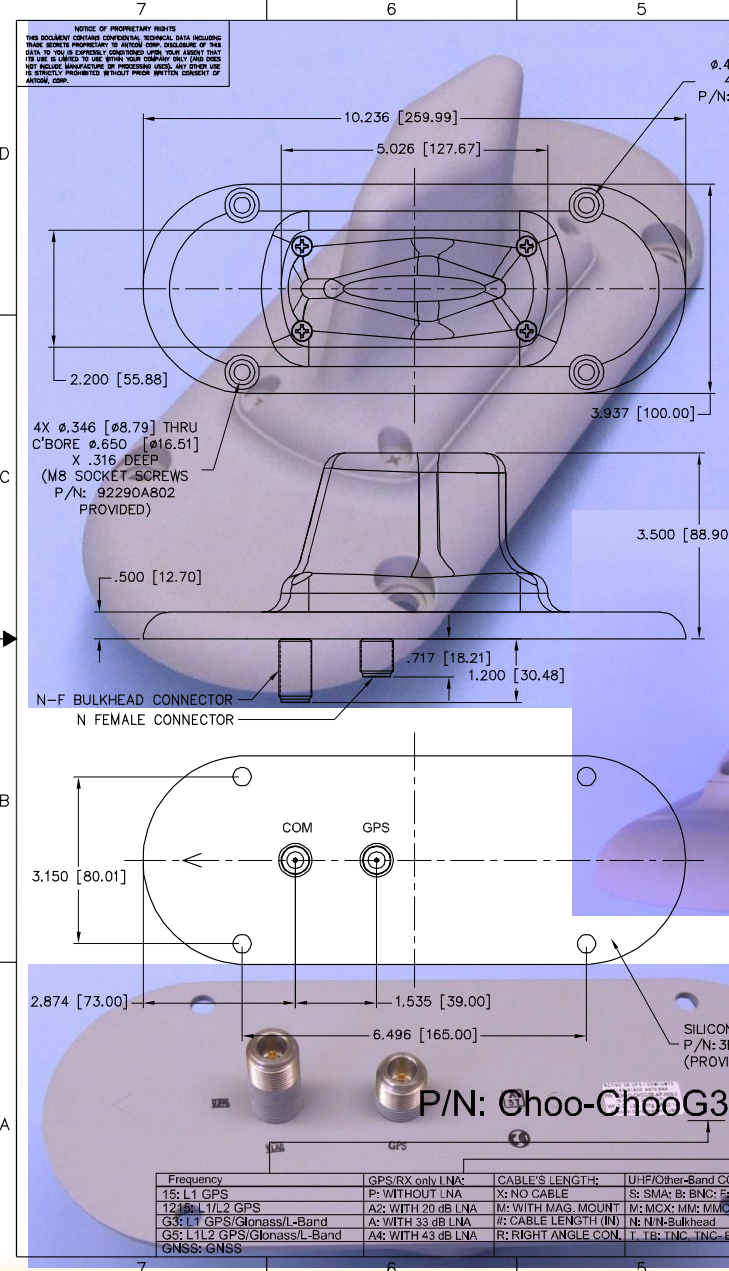


ANTCOM CORPORATION . 367 Van Ness Way, Suite 602 . Torrance, CA 90501 . Tel: (310) 782-1076 . Fax: (310) 782-1086 . E-mail: antennas@antcom.com . http://www.antcom.com

“-HF” for High Iridium/Inmarsat/Thuraya-Rejection Front End Filter Option: -22dB@1616MHz, -34dB@1625-1660MHz
“-HFO” for Additional Omnidirectional Rejection: -27dB@1545MHz



ELECTRICAL:		SPECIFICATIONS					
		G5		G3		COM	
FREQUENCY:	L5 GPS E5, E5a, E5b Galileo L5 IRNSS: 1176.45 ± 12 MHz, 1164.45 - 1219.14 MHz, 1176.45 ± 15 MHz	L2 GPS B2 Compass: 1227.60 ± 12 MHz, 1207.14 ± 10 MHz	L2 GLONASS E5 Galileo B3 Compass: 1252.50 ± 7.5 MHz, 1266.75 - 1290.75 MHz, 1266.52 ± 10 MHz	Omnistar / L-Band L6 Galileo B1 Compass: 1542.50 ± 14.0 MHz, 1542.50 ± 5.0 MHz, 1561.098 ± 10 MHz	L1 GPS E1, E2 Galileo L1 IRNSS: 1575.42 ± 15.0 MHz, 1575.42 ± 17.0 MHz, 1575.42 ± 12.0 MHz	L1 GLONASS: 1603 ± 7.0 MHz	GSM/UMTS WLAN: 870-960, 1800-2300, 2300-2400, 2400-2700, 3000-3700, 4000-5875
RADIATION PATTERN:	HEMISPHERICAL						
POLARIZATION:	RHCP	RHCP	RHCP	RHCP	RHCP	OMNI	
VSWR:	< 2.0:1	< 2.0:1	< 2.0:1	< 2.0:1	< 2.0:1	< 2.0:1	
IMPEDANCE:	50 ohms	50 ohms	50 ohms	50 ohms	50 ohms	50 ohms	
ANTENNA GAIN (dBic):	Free Space sin G.P	Free Space sin G.P	Free Space sin G.P	Free Space sin G.P	Free Space sin G.P	Free Space sin G.P	
@ 90° (ZENITH):	-4	+3.2	+1.8	+1.2	+0.8	+4.0	
@ 10° Elevation:	-11	-3.7	-4.9	-5.4	-5.4	-3.5	
@ 20° Elevation:	-10	-2.8	-2.2	-4.1	-3.7	-4.8	
@ 30° Elevation:	-9	-1.4	-0.2	-2.4	-1.8	-3.5	
@ 60-90° Elevation:	> -6	> -5	> +1.4	> +0.5	> +0.6	> +2.6	
BEAM WIDTH (3dB):	95 Deg.	100 Deg.	107 Deg.	95 Deg.	105 Deg.	90 Deg.	
AXIAL RATIO:	3 dB	3 dB	1 dB	1 dB	1 dB	1 dB	
LIGHTNING PROTECTION:	DC GROUNDING						
LNA GAIN:	36 dB	35 dB	35 dB	33 dB	33 dB	33 dB	
LNA NOISE FIGURE:	2.7 dB	2.7 dB	2.7 dB	2.7 dB	2.7 dB	2.7 dB	
LNA P1dB Out:	+13 dBm	+13 dBm	+13 dBm	+13 dBm	+13 dBm	+13 dBm	
LNA DC POWER:	2.5V/20mA, 3V/29mA, 3.3V/35mA, (2.5-24V)/-50mA						
FILTERS & OUT OF BAND REJECTION:	For L1 or L1/L2: 36dB@1616MHz (Hdum); 44dB@1625MHz, 55dB@1640MHz, 67dB@1660MHz (Inmarsat/Thuraya) For G3, G5 or GNSS: 8dB@1616MHz (Hdum); 38dB@1625MHz, 45dB@1640MHz, 73dB@1660MHz (Inmarsat/Thuraya)						
POWER HANDLING:	1 Watt CW, Optional: 10 Watts 1 Microsec Pulse (-3dB)						

MECHANICAL:

SIZE: WIDTH 10.24 in. [260 mm], LENGTH 3.94 in. [100 mm], HEIGHT 3.50 in. [88.9 mm]

WEIGHT: 25.0 oz. (709g)

FINISH: SKYDROL RESISTANT POLYURETHANE ENAMEL
BASE IRIDITE PER MIL-C-5541F

COLOR: LUSTERLESS RED #31136 PER FED-STD-595B

MATERIAL: 6061-T6 ALUMINUM ALLOY BASE
COMPOSITE RADOME, IMPACT, ABRASION, UV, SOLVENT, SKYDROL RESISTANCE, AND FIRE RETARDANT

CONNECTOR: N FEMALE, N FEMALE BULKHEAD (OPTION: SMA, N, TNC)

ENVIRONMENTAL:

TEMPERATURE: -76°F TO +185°F [-60°C TO +85°C]

ALTITUDE: 70,000 ft.

VIBRATION: 30 G's

LEAKAGE: HERMETICALLY SEALED

INGRESS: IP 68

SPECIFICATIONS:

EN 50155, EN 50121-3-2, DO-160D, D0-228, MIL-C-5541, MIL-STD-461E/F, SAE J1455
MIL-E-5400, MIL-I-45208A, MIL-STD-810, MIL-S-9010, MIL-STD-167-1A

QTY	DESCRIPTION	PART NO	REV
1	OPTIONAL M10 56x115mm MOUNTING ADAPTER	P/N: 509-10, Item 509-M10	4
1	SILICON GASKET	P/N: 3BG15P1001-2-TR, Item 546-TR	3
4	TOP O-RING (FOR SCREW)	P/N: AS568A-011, Item 553-011	2
4	SCREW, SOCKET, M8 X 1.25, 16.4MM L	P/N: 92290A802, Item 590NB-1	1

QTY	DESCRIPTION	PART NO	REV
1	OPTIONAL M10 56x115mm MOUNTING ADAPTER	P/N: 509-10, Item 509-M10	4
1	SILICON GASKET	P/N: 3BG15P1001-2-TR, Item 546-TR	3
4	TOP O-RING (FOR SCREW)	P/N: AS568A-011, Item 553-011	2
4	SCREW, SOCKET, M8 X 1.25, 16.4MM L	P/N: 92290A802, Item 590NB-1	1

QTY	DESCRIPTION	PART NO	REV
1	OPTIONAL M10 56x115mm MOUNTING ADAPTER	P/N: 509-10, Item 509-M10	4
1	SILICON GASKET	P/N: 3BG15P1001-2-TR, Item 546-TR	3
4	TOP O-RING (FOR SCREW)	P/N: AS568A-011, Item 553-011	2
4	SCREW, SOCKET, M8 X 1.25, 16.4MM L	P/N: 92290A802, Item 590NB-1	1

QTY	DESCRIPTION	PART NO	REV
1	OPTIONAL M10 56x115mm MOUNTING ADAPTER	P/N: 509-10, Item 509-M10	4
1	SILICON GASKET	P/N: 3BG15P1001-2-TR, Item 546-TR	3
4	TOP O-RING (FOR SCREW)	P/N: AS568A-011, Item 553-011	2
4	SCREW, SOCKET, M8 X 1.25, 16.4MM L	P/N: 92290A802, Item 590NB-1	1

QTY	DESCRIPTION	PART NO	REV
1	OPTIONAL M10 56x115mm MOUNTING ADAPTER	P/N: 509-10, Item 509-M10	4
1	SILICON GASKET	P/N: 3BG15P1001-2-TR, Item 546-TR	3
4	TOP O-RING (FOR SCREW)	P/N: AS568A-011, Item 553-011	2
4	SCREW, SOCKET, M8 X 1.25, 16.4MM L	P/N: 92290A802, Item 590NB-1	1