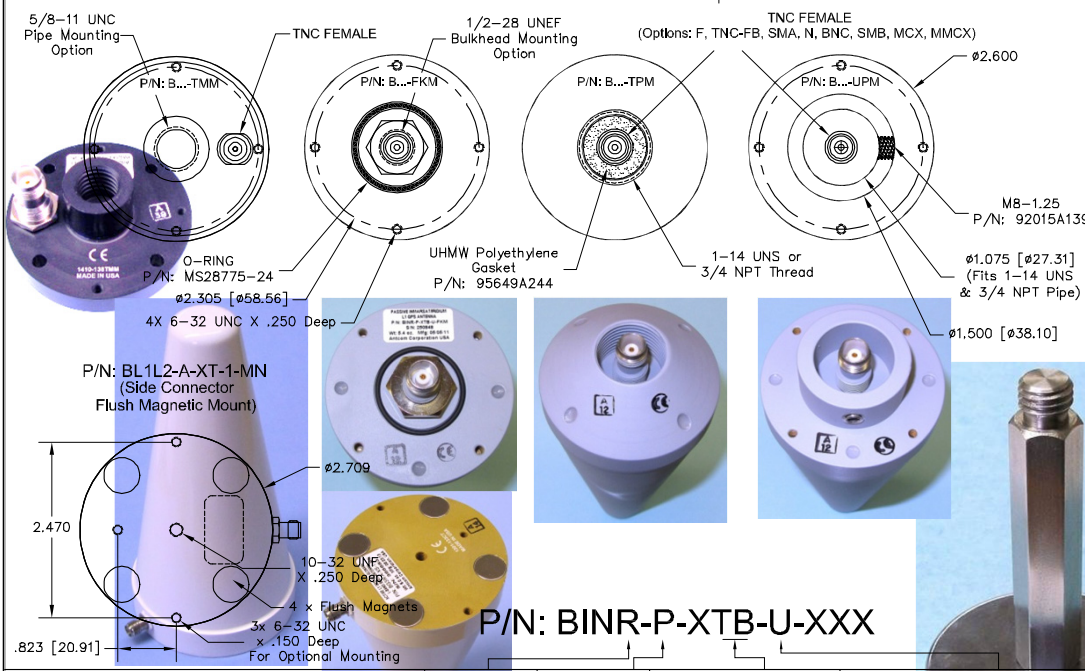
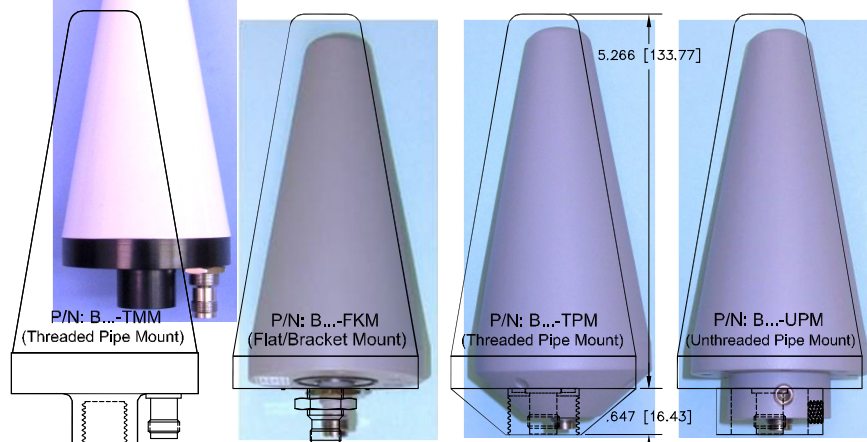




New Ruggedized, High Corrosion/Harsh Environmental Resistant Helix Antennas
Inmarsat/Iridium/L1GPS/Glonass/Omnistar: P/N: BINR-X-XX-U-XXX, Iridium/L1GPS/Glonass/Omnistar: P/N: BIRR-X-XX-U-XXX,
Thuraya/Tx-Globalstar: P/N: BTL-X-XX-U-XXX, Active L1 GPS: P/N: BLI-A-XX-U-XXX,
Active L1 GPS/Glonass/L-Band: P/N: BG3-A-XX-U-XXX, for Active L1/L2: P/N: BL1L2-A-XX-U-XXX
for Buoy, Marines, Underwater, Ground, Weather Balloon, and Helicopter Applications
Also Available in other Mounting Configurations of 3G, 4G, 42G, 5G, S5, Mini-Arinc, and Arinc-743 Antenna Series



NOTICE OF PROPRIETARY RIGHTS
 THIS DOCUMENT CONTAINS CONFIDENTIAL, TECHNICAL DATA INCLUDING TRADE SECRETS PROPRIETARY TO ANTCOM. YOUR DISCLOSURE OF THIS DATA TO YOU IS EXPRESSLY CONDITIONED UPON YOUR AGREEMENT THAT ITS USE IS LIMITED TO USE WITHIN YOUR COMPANY ONLY AND DOES NOT INCLUDE MANUFACTURE OR PROCESSING USES. ANY OTHER USE IS STRICTLY PROHIBITED WITHOUT WRITTEN CONSENT OF ANTCOM, CORP.



P/N: BINR-P-XTB-U-XXX

SPECIFICATIONS

ELECTRICAL:	REVISIONS					
	ZONE	REV	DESCRIPTION	DATE	APPROVED	
FREQUENCY (MHz):	(1575.42 ±15)	(1542.50 ±17.5)	(1642.50 ±17.5)	(1598 - 1609)	(1610-1626.5)	(1217.42 ±15)
GAIN (dBic) in FS/4ft GP	L1 GPS	Rx Inmarsat/B1 or Thuraya	Tx Inmarsat or Thuraya	GLONASS	IRIDIUM or Tx Globalstar	L2 GPS for L1/L2 Version
@ 90° (Zenith):	+1.1/+3.7	+0.7/+1.5	-0.3/0.0	+0.5/+2.9	+0.1/+1.1	0.0
@ 10° Elevation:	-0.9/+0.0	-1.6/-1.3	-1.9/-1.0	-1.3/+0.2	-1.6/-0.8	-2.4 to -6.3
@ 20° Elevation:	-0.2/+2.0	-0.8/+1.0	-1.1/+1.2	-0.5/+2.4	-0.8/+1.2	-1.8 to -4.8
@ 30° Elevation:	+0.3/+2.0	-0.2/+1.0	-0.8/+0.4	+0.1/+2.1	-0.7/+1.1	-1.3 to -3.4
@ 45° Elevation:	+0.6/+1.5	+0.3/+0.6	-0.7/-0.8	-0.1/+1.0	-0.3/-0.3	-0.5 to -1.5
@ 70° Elevation:	+0.3/+1.3	+0.3/+0.4	-1.6/0.0	-0.3/+1.1	-0.7/0.0	0.0 to -0.5
BEAM WIDTH (3dB)	173/155 Deg.	173/155 Deg.	180/162 Deg.	180/162 Deg.	180/162 Deg.	120/165 Deg.
AXIAL RATIO (dB)	1 to 3	1 to 3	1 to 3	1 to 3	1 to 3	1 to 5
RADIATION PATTERN:	HEMISPHERICAL					
POLARIZATION:	RHCP	RHCP or LHCP	RHCP or LHCP	RHCP	RHCP or LHCP	RHCP
VSWR:	< 2:1					
DC GROUNDING:	YES (LIGHTNING PROTECTION)					
LNA OPTION (for GNSS or GNSS/Rx only VERSIONS (...A-...)):						
LNA GAIN (OPTION):	33 dB					
LNA NOISE FIGURE:	3.0 dB					
LNA P1dB Out:	+13 dBm					
LNA DC POWER:	(2.5 to 24)V / < 50mA					
POWER HANDLING:	PASSIVE:10W; LNA ACTIVE: 1 Watt CW					

MECHANICAL:

SIZE: DIAMETER: 2.60in. [66 mm]
 HEIGHT: 5.266 in. [133 mm]
WEIGHT: < 8oz. (226g)
FINISH: HERMETICALLY SEAL & TEFLON COATED
MATERIAL: 6061-T6 ALUMINUM ALLOY BASE & RUGGEDIZED RADOME IMPACT, ABRASION, UV, SOLVENT, SKYDROL, CORROSION RESISTANCE, AND FIRE RETARDANT
CONNECTOR: TNC FEMALE (OPTION: TNC-BK, F, SMA, BNC, N, MCX, MMCX)
ENVIRONMENTAL: TEMPERATURE: -95 °F to +194 °F [-70 °C to +90 °C]
 VIBRATION: -700ft to +70,000 ft. (for -U-FKM/-U-TPM, from Mounting Surface)
 30 G's
 HERMETICALLY SEAL

FEDERAL & MILITARY SPECIFICATIONS:

FAA TSO-C144, DO-160D, DO-228, MIL-C-5541, MIL-E-5400, MIL-I-45208A, MIL-STD-B10, MIL-STD-461E/F, AND SAE J1455
ACCEPTANCE TEST PROCEDURE: ATP-GPS-L1L2-100

5/8-11 Magnetic Standoff Antenna Mount, P/N: MTR-3M (Item 484c)

QUANTITY	DESCRIPTION	PARTS LIST	REV
1	Additional SILICON GASKET (Item 539a) for -FKM	3G15P-001-2G	2
1			1

UNLESS OTHERWISE SPECIFIED	TOLERANCES ARE IN INCHES	ANGLES
FRACTIONS	DECIMALS	DECIMALS
± 1/64	± .005	± 1°

REVISION	DATE	BY	CHKD	APP'D	DESCRIPTION
1	Apr-11-11	S. HUPPIN			Imarsat/Iridium/L1GPS, or Thuraya/Tx-Globalstar or L1-GPS, or L1-GPS/Glonass/L-Band/B1, or L1/L2-GPS, or L1/L2-GPS/Glonass/B1/B3/B2/L5 Antenna
2	Apr-11-11	S. HUPPIN			
3	Apr-11-11	S. HUPPIN			
4	Apr-11-11	S. HUPPIN			
5	Apr-11-11	S. HUPPIN			
6	Apr-11-11	S. HUPPIN			
7	Apr-11-11	S. HUPPIN			
8	Apr-11-11	S. HUPPIN			
9	Apr-11-11	S. HUPPIN			
10	Apr-11-11	S. HUPPIN			

FREQUENCY (GHz):	POLARIZATION:	LNA:	FEMALE CONNECTOR:	COLOR: (U: TEFLON COATED GRAY for IM/INES/BUOY APP.
IN: Imarsat/Iridium/L1GPS/Glonass (RHCP); Iridium/L1GPS/Glonass (RHCP)	R: RHCP	P: PASSIVE	T: TNC; TB: TNC-Bulkhead; F: F	-1: GLOSS WHITE #17925 PER FED-STD-595B PAINT
T: Thuraya/Tx Globalstar (LHCP); G:Tx only Globalstar (LHC)	L: LHCP	A: with LNA/FILTERS for Rx only VERSIONS	S: SMA; SMB; SMR; B; BNC	-2: LUSTERLESS GRAY #36320 PER FED-STD-595B PAINT
L1: L1 GPS Only; G3: L1 GPS/GLONASS/L-Band/B1; L1L2:L1L2 GPS only	R: RHCP		M: MCX; MM; MMCX;MMR; MMCX-R	-3: OLIVE DRAB GREEN #34094 PER FED-STD-595B PAINT
G5: L1/L2 GPS/GLONASS/L-Band/B1/B3/B2/L5	R: RHCP		N: NN-Bulkhead	-4: LUSTERLESS BLACK #37038 PER FED-STD-595B PAINT
L01: QUAD-BAND (GS/PCS/L-Band/Lcatat/W-FIS/C-Band	V: Linear (Vertical)		SMC, SSMC, SSB, SSMA	-5: TAN #; FS 23446 or 33446, FED-STD-595 PAINT