



New Ruggedized, High Corrosion/Harsh Environmental Resistant Helix/Patch Antennas

Inmarsat/Iridium/ GPS: P/N: **B1NXXRR-PA-XTS-U-XXX**, Iridium/ GPS: P/N: **B1RXXRR-PA-XTS-U-XXX**,

Thuraya/Tx-Globalstar/ GPS: P/N: **B1XXLR-PA-XTS-U-XXX**,

Quad-Band (GSM/PCS)/Wi-Fi/S/C-Band/ GPS: P/N: **B1LoXXVR-PA-XTS-U-XXX**,

for Buoy, Marines, Underwater, Ground, Weather Balloon, and Helicopter Applications

Also Available in other Mounting Configurations of 3G, 4G, 42G, 5G, S5, Mini-Arinc, and Arinc-743 Antenna Series

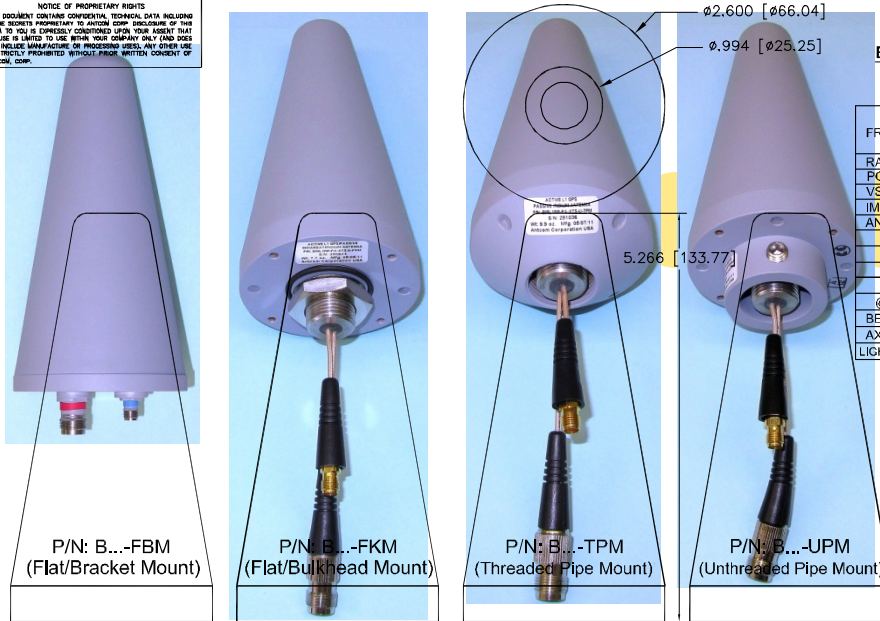
Antenna Mounts: <http://www.antcom.com/documents/catalogs/PeripheralAntennaProducts2.pdf>



ISO 9001:2008/FAA Approved Facility

ANTCOM CORPORATION . 367 Van Ness Way, Suite 602 . Torrance, CA 90501, USA . Tel: (310) 782-1076 . Fax: (310) 782-1086 . E-mail: antennas@antcom.com . <http://www.antcom.com>

NOTICE OF PROPRIETARY RIGHTS
THIS DOCUMENT CONTAINS CONFIDENTIAL, TECHNICAL DATA INCLUDING TRADE SECRETS PROPRIETARY TO ANTCOM CORP. REPRODUCTION OF THIS DATA TO YOU IS EXPRESSLY CONDITIONED UPON YOUR AGREEMENT THAT YOU WILL BE LIMITED TO USE WITHIN YOUR COMPANY. ANY OTHER USE OR REVELATION OF THIS INFORMATION TO ANY OTHER PARTY IS STRICTLY PROHIBITED WITHOUT PRIOR WRITTEN CONSENT OF ANTCOM CORP.



ELECTRICAL:

COMMON SPECIFICATIONS:									
GNSS PORT: of either L1, or L1L2, or G3, or G5 Frequencies		COM PORT: of either Inmarsat/Iridium, or Thuraya, or Globalstar, or Quad-Band....							
L1 GPS E5/E5a/E5b (L1) IRNSS	L2 GPS B2 Compass	L2 GLONASS L6 Galileo B3 Compass	Omni/L-Band L1 IRNSS	L1 GPS E1 E2 Galileo L1 IRNSS	L1 GLONASS	Rx Inmarsat or Thuraya	Tx Inmarsat or Thuraya	Iridium or Globalstar	QUAD-BAND (GSM/PCS) L-Band W/FI/S/C-Band
1176.4 ± 12 1191.5 ± 27 1176.4 ± 15	1227.60 ± 12 1207.14 ± 10	1252.5 ± 7.5 1278.7 ± 12 1268.5 ± 10	1542.5 ± 14 1542.5 ± 5 1561.1 ± 10	1575.4 ± 15 1575.4 ± 17 1575.4 ± 12	1609 ± 7.0	1542.5 ± 17	1642.5 ± 17	1610-1626.5	1710-1990 1800-1990 2300-2300 4400-5300
RADIATION PATTERN: HEMISPHERICAL									
POLARIZATION: RHCP					RHCP or LHCP				
VSWR: < 2.0:1									
IMPEDANCE: 50 ohms									
ANTENNA GAIN (dBi): Free Space									
@ 90° (ZENITH): -7 +0.5 -0.8 +1.9 +4.1 +2.0 +0.7 -0.3 +0.1									
@ 10° Elevation: -13 -5.6 -7.1 -5.0 -2.8 -5.1 -1.6 -1.9 -1.6									
@ 20° Elevation: -11 -3.9 -5.4 -3.9 -2.9 -4.1 -0.8 -1.1 -0.8									
@ 30° Elevation: -10 -2.6 -4.3 -2.6 -0.4 -2.6 -0.2 -0.8 -0.7									
@ 60 - 90° Elevation: > -8 > -1 > -2.4 > +0.8 > 2.9 > +0.8 > +0.3 > -1.6 > -0.7									
BEAM WIDTH (3dB): 105 Deg. 105 Deg. 90 Deg. 95 Deg. 95 Deg. 95 Deg. 173 Deg. 180 Deg. 180 Deg. OMNI									
AXIAL RATIO (dB): 1.5 1 1 1 1 2 1 to 3 1 to 3 1 to 3 N/A									
LIGHTNING PROTECTION: DC GROUNDING									

LNA OPTION (for GNSS or GNSS/COM=Rx only VERSIONS (...A...)):

LNA GAIN (OPTION):	33 dB
LNA NOISE FIGURE:	3.0 dB
LNA P1dB Out:	+13 dBm
LNA DC POWER:	(2.5 to 24)V / < 50mA
POWER HANDLING:	PASSIVE:10W; LNA ACTIVE: 1 Watt CW

MECHANICAL:

- SIZE: DIAMETER: 2.600in. [66 mm]
HEIGHT: 5.266 in. [133 mm]
- WEIGHT: < 10oz. (283g)
- FINISH: HERMETICALLY SEAL & TEFLON COATED
- MATERIAL: 6061-T6 ALUMINUM ALLOY BASE & RUGGEDIZED RADOME IMPACT, ABRASION, UV, SOLVENT, SKYDROL, CORROSION RESISTANCE, AND FIRE RETARDANT
- CONNECTOR: COM PORT: TNC FEMALE; GNSS PORT: SMA FEMALE (OPTION: TNC, F, SMA, BNC, N, MCX, MMCX)

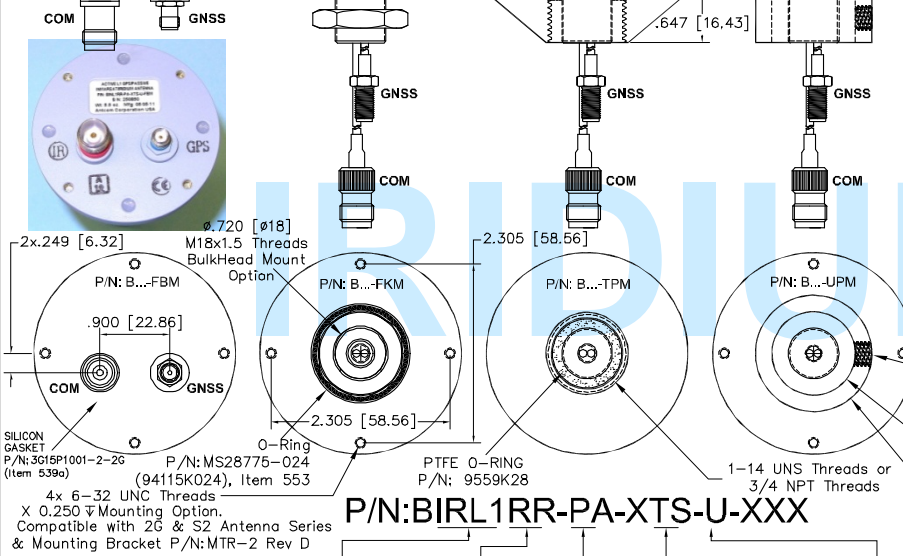
ENVIRONMENTAL:

- TEMPERATURE: -95 °F TO +194 °F [-70 °C TO +90 °C]
-700ft to +70,000 ft. (for -U-FBM-U-FKM-U-TPM, from Mounting)
- VIBRATION: 30 G's
HERMETICALLY SEAL

FEDERAL & MILITARY SPECIFICATIONS:

FAA TSO-C144, DO-160D, D0-228, MIL-C-5541, MIL-E-5400, MIL-I-45208A, MIL-STD-810, MIL-STD-461E/F, AND SAE J1455

ACCEPTANCE TEST PROCEDURE: ATP-GPS-L1L2-100



P/N: B1RL1RR-PA-XTS-U-XXX

COM & GNSS FREQUENCY (GHz):	POLARIZATION:	LNA:	COM/GNSS Female Connector:	COLOR: -U: TEFLON COATED GRAY for MARINES/BUOY APP.
INL1: COM=Inmarsat/Iridium; GNSS=L1GPS IRL1: COM=Iridium; GNSS=L1GPS RR: RHCP/RHCP	TL1: COM=Thuraya/Tx-Globalstar; GNSS=L1GPS LR: LHCP/RHCP	P: PASSIVE	T: TNC; F: F	-1: GLOSS WHITE #17925 PER FED-STD-595B PAINT
LoL1: COM=QUAD-BAND (GSM/PCS)/L-Band/Locata/Wi-Fi/S/C-Band; GNSS=L1GPS VR: Vertical/RHCP	Change "L1" to "L1L2" for GNSS=L1L2 GPS, to "G3" for GNSS=L1GPS/Glonass/L-Band/B1 to "G5" for GNSS=L1L2 GPS/Glonass/L-Band/B1/B3/B2/L5	A: with LNA/FILTERS for Rx only VERSIONS	S: SMA; SMB; SMR; B: BNC	-2: LUSTERLESS GRAY #38320 PER FED-STD-595B PAINT
			M: MCX; M/M; MMCX; MMR; MMCX-R	-3: OLIVE DRAB GREEN #34094 PER FED-STD-595B PAINT
			N: N/N-Bulkhead	-4: LUSTERLESS BLACK #37038 PER FED-STD-595B PAINT
			S: SMC, SSMC, SSMB, SSMA	-5: TAN #1: FS 23446 or 33446, FED-STD-595 PAINT

QUANTITY REQD	DESCRIPTION	PARTS LIST	PART NO	ITEM NO
5				5
4				4
3				3
2				2
1	Additional SILICON GASKET (Item 539a) for -FBM/-FKM	367-1001-2-2G		1

UNLESS OTHERWISE SPECIFIED DIMENSIONS ARE IN INCHES TOLERANCES ARE ANGLES		ANTCOM CORP. TORRANCE CALIFORNIA	
FRACTIONS: XX.XXX ± 1/64	XX.XXX ± 1/16	DRAWN	Inmarsat/Iridium, or Thuraya/Tx-Globalstar or Quad-Band (GSM/PCS)/L-Band/Locata/Wi-Fi/S/C-Band & (L1-GPS, or L1L2-GPS/Glonass/L-Band/B1, or L1L2-GPS, or L1L2-GPS/Glonass/L-Band/B1/B3/B2/L5)
TOLERANCE 5/16 PER ANSI Y14.5	REMOVE ALL BURRS	CHECKED	
INTERNAL DIMS .005 TO .015	FILE TO .005 TO .015	ENGINEER	
SIZE 1/8 INCHES PER MIL-C-8879	DATE ON A COMMON 27.005	APPROVED	
MACHINED SURFACES		S. HUYNH	
DO NOT SCALE DRAWING		DATE	
		SCALE	1/1
		SHEET	1 OF 1

NMO Connector is Now Available for Some Antennas