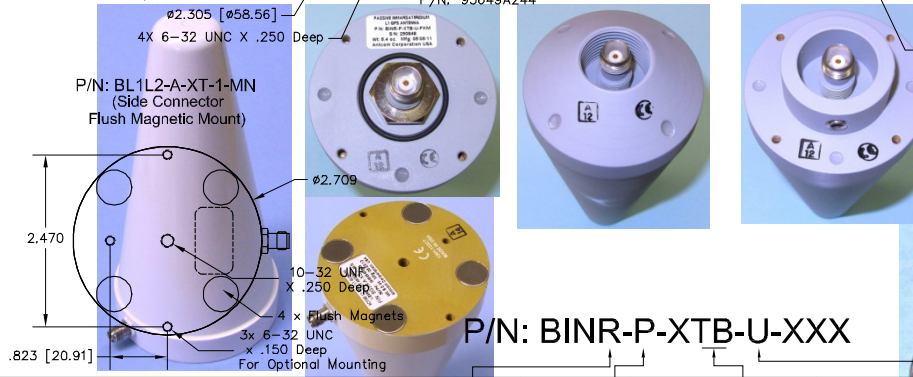
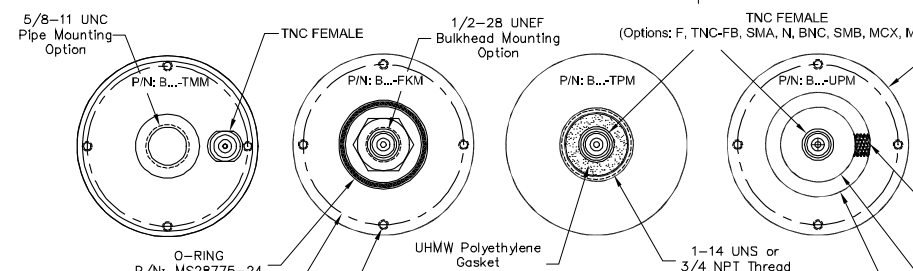
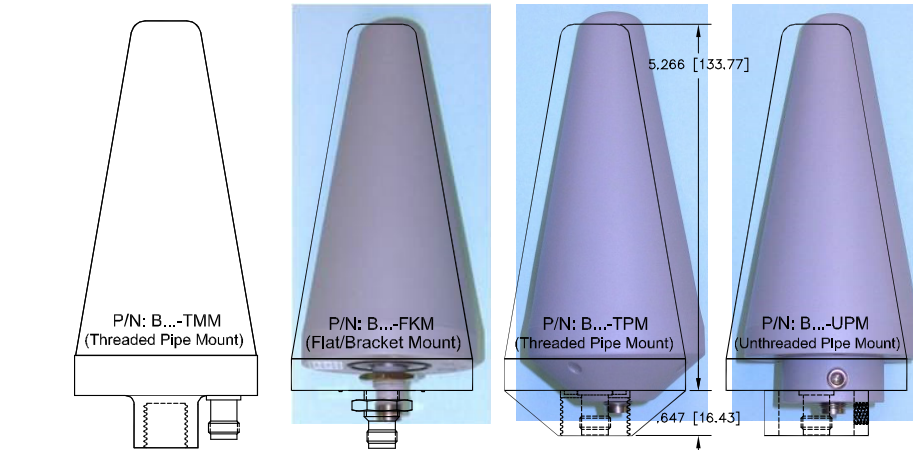


**ANTCOM CORPORATION . 367 Van Ness Way, Suite 602 . Torrance, CA 90501 . Tel: (310) 782-1076 . Fax: (310) 782-1086 . E-mail: [antennas@antcom.com](mailto:antennas@antcom.com) . <http://www.antcom.com>**

for High Iridium/Inmarsat/Thuraya-Rejection Front End Filter Option: **-22dB@1616MHz, -34dB@(1625-1660)MHz**  
 for Additional OmniStar/TerraStar "HFO" for Additional OmniStar/TerraStar Rejection: **-27dB@1545MHz**

NOTICE OF PROPRIETARY RIGHTS  
 THIS DOCUMENT CONTAINS CONFIDENTIAL, TECHNICAL DATA INCLUDING TRADE SECRETS PROPRIETARY TO ANTCOM CORP. UNLESS OTHERWISE STATED, ALL RIGHTS ARE RESERVED. NO USE, REPRODUCTION, OR DISSEMINATION OF THIS DATA TO YOU IS EXPRESSLY GRANTED UNDER YOUR ASSENT THAT YOU WILL BE LIMITED TO USE WITHIN YOUR COMPANY ONLY AND DOES NOT INCLUDE MANUFACTURE OR REPRODUCTION OF ANY OTHER USE OR REPRODUCTION WITHOUT PRIOR WRITTEN CONSENT OF ANTCOM CORP.



**ELECTRICAL: SPECIFICATIONS**

ZONE	REVISIONS						
	REV	DESCRIPTION	DATE	APPROVED			
FREQUENCY (MHz):	(1575.42 ±15)	(1542.50 ±17.5)	(1642.50 ±17.5)	(1598 - 1609)	(1610-1626.5)	(1217.42 ±15)	
GAIN (dBic) in FS/4ft GP	L1 GPS	Rx Inmarsat/B1 or Thuraya	Tx Inmarsat or Thuraya	GLONASS	IRIDIUM or Tx Globalstar	L2 GPS for L1/L2 Version	
@ 90° (Zenith):	+1.1/+3.7	+0.7/+1.5	-0.3/0.0	+0.5/+2.9	+0.1/+1.1	0.0	
@ 10° Elevation:	-0.9/+0.0	-1.6/-1.3	-1.9/-1.0	-1.3/+0.2	-1.6/-0.8	-2.4 to -6.3	
@ 20° Elevation:	-0.2/+2.0	-0.8/+1.0	-1.1/+1.2	-0.5/+2.4	-0.8/+1.2	-1.8 to -4.8	
@ 30° Elevation:	+0.3/+2.0	-0.2/+1.0	-0.8/+0.4	+0.1/+2.1	-0.7/+1.1	-1.3 to -3.4	
@ 45° Elevation:	+0.6/+1.5	+0.3/+0.6	-0.7/-0.8	-0.1/+1.0	-0.3/-0.3	-0.5 to -1.5	
@ 70° Elevation:	+0.3/+1.3	+0.3/+0.4	-1.6/0.0	-0.3/+1.1	-0.7/0.0	0.0 to -0.5	
BEAM WIDTH (3dB)	173/155 Deg.	173/155 Deg.	180/162 Deg.	180/162 Deg.	180/162 Deg.	120/165 Deg.	
AXIAL RATIO (dB)	1 to 3	1 to 3	1 to 3	1 to 3	1 to 3	1 to 5	
RADIATION PATTERN:	HEMISPHERICAL						
POLARIZATION:	RHCP	RHCP or LHCP	RHCP or LHCP	RHCP	RHCP or LHCP	RHCP	
VSWR:	< 2:1						
DC GROUNDING:	YES (LIGHTNING PROTECTION)						
<b>LNA OPTION (for GNSS or GNSS/Rx only VERSIONS (-A-/-)):</b>							
LNA GAIN (OPTION):	33 dB						
LNA NOISE FIGURE:	3.0 dB						
LNA P1dB Out:	+13 dBm						
LNA DC POWER:	(2.5 to 24)V / < 50mA						
POWER HANDLING:	PASSIVE: 10W; LNA ACTIVE: 1 Watt CW						

**MECHANICAL:**

SIZE: DIAMETER: 2.60in. [66 mm]  
 HEIGHT: 5.266 in. [133 mm]

WEIGHT: < 8oz. (226g)

FINISH: HERMETICALLY SEAL & TEFLON COATED

MATERIAL: 6061-T6 ALUMINUM ALLOY BASE & RUGGEDIZED RADOME IMPACT, ABRASION, UV, SOLVENT, SKYDROL, CORROSION RESISTANCE, AND FIRE RETARDANT

CONNECTOR: TNC FEMALE  
 (OPTION: TNC-BK, F, SMA, BNC, N, MCX, MMCX)

ENVIRONMENTAL:

TEMPERATURE: -95 °F TO +194 °F [-70 °C TO +90 °C]  
 -700ft to + 70,000 ft. (for -U-FKM/-U-TPM, from Mounting Surface)

VIBRATION: 30 G's  
 HERMETICALLY SEAL

FEDERAL & MILITARY SPECIFICATIONS:

FAA TSO-C144, DO-160D, DO-228, MIL-C-5541, MIL-E-5400, MIL-45208A, MIL-STD-810, MIL-STD-461E/F, AND SAE J1455

ACCEPTANCE TEST PROCEDURE: ATP-GPS-L1L2-100

**5/8-11 Magnetic Standoff Antenna Mount, P/N: MTR-3M (Item 484c)**

FREQUENCY (GHz):	POLARIZATION:	LNA:	FEMALE CONNECTOR:	COLOR: -U: TEFLON COATED GRAY for MARINE/SBUOY APP.
In: Inmarsat/Iridium/L1GPS/Glonass (RHCP); IR/Iridium/L1GPS/Glonass (RHCP)	R: RHCP	P: PASSIVE	T: TNC; TB: TNC-Bulkhead; F: F	-1: GLOSS WHITE #17925 PPR FED-STD-595 PAINT
T: Thuraya/Tx Globalstar (LHCP); G: Tx only Globalstar (LHCP)	L: LHCP	A: WITH	S: SMA; SMB; SMBR; B: BNC	-2: LUSTERLESS GRAY #98320 PER FED-STD-595 PAINT
L1: L1 GPS Only; G3: L1 GPS/GLONASS/L-Band/B1; L1L2/L1L2 GPS only	R: RHCP	LNA/FILTERS for	M: MCX; MM; MMCX; MMR; MMCX-R	-3: OLIVE DRAB GREEN #34094 PPR FED-STD-595 PAINT
G5: L1/L2 GPS/GLONASS/L-Band/B1/B3/B2/L5	R: RHCP	Rx only VERSIONS	N: N/B-Bulkhead	-4: LUSTERLESS BLACK #37038 PPR FED-STD-595 PAINT
Lp1: QUAD-BAND (GSM/PCS/L-Band/Locast/M-FIS/C-Band)	V: Linear (Vertical)		S: SMC, SSMC, SSMB, SSMA	-5: TAN #; FS 23446 or 33446, FED-STD-595 PAINT

QUANTITY REQD	DESCRIPTION	PARTS LIST	PART NO	REV
2				
1	Additional SILICON GASKET (Item 539a) for -FKM 3G15P100	-2-2G		1

UNLESS OTHERWISE SPECIFIED DIMENSIONS ARE IN INCHES TOLERANCES ARE: ANGLES ± 1°

ANTCOM CORP. TORRANCE CALIFORNIA

Inmarsat/Iridium/L1GPS or Inmarsat/Tx Globalstar or L1-GPS, or L1-GPS/Glonass/L-Band/B1, or L1/L2-GPS, or L1/L2-GPS/Glonass/B1/B3/B2/L5 Antenna

DATE: 03/26/15  
 DRAWN BY: S. HUYNH  
 CHECKED BY: S. HUYNH  
 APPROVED BY: S. HUYNH

SCALE: 1/1

SHEET 1 OF 1