



New Ruggedized, High Corrosion/Harsh Environmental Resistant Helix/Patch Antennas

Inmarsat/Iridium/ GPS: P/N: **B/INXXRR-PA-XTS-U-XXX**, **Iridium/ GPS:** P/N: **B/IRXXRR-PA-XTS-U-XXX**,

Thuraya/Tx-Globalstar/ GPS: P/N: **B/TXXLR-PA-XTS-U-XXX**,

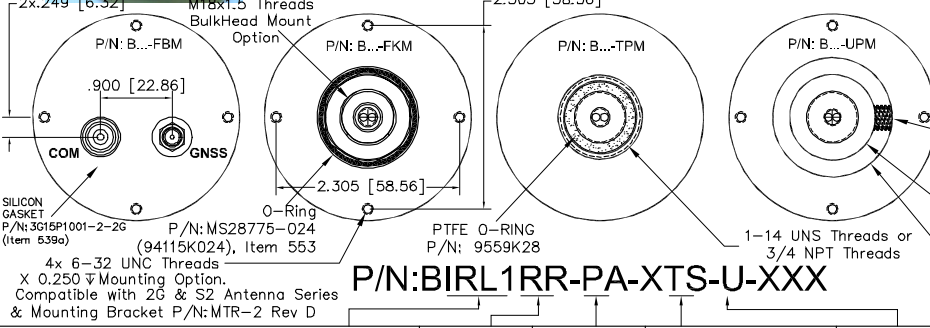
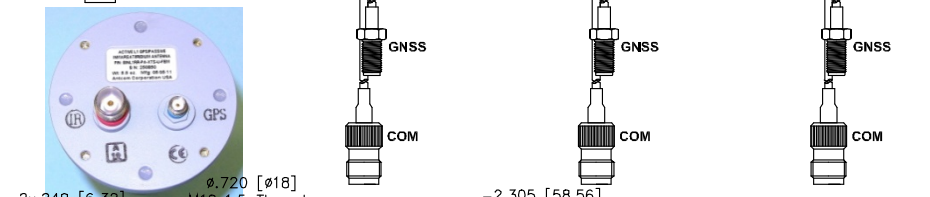
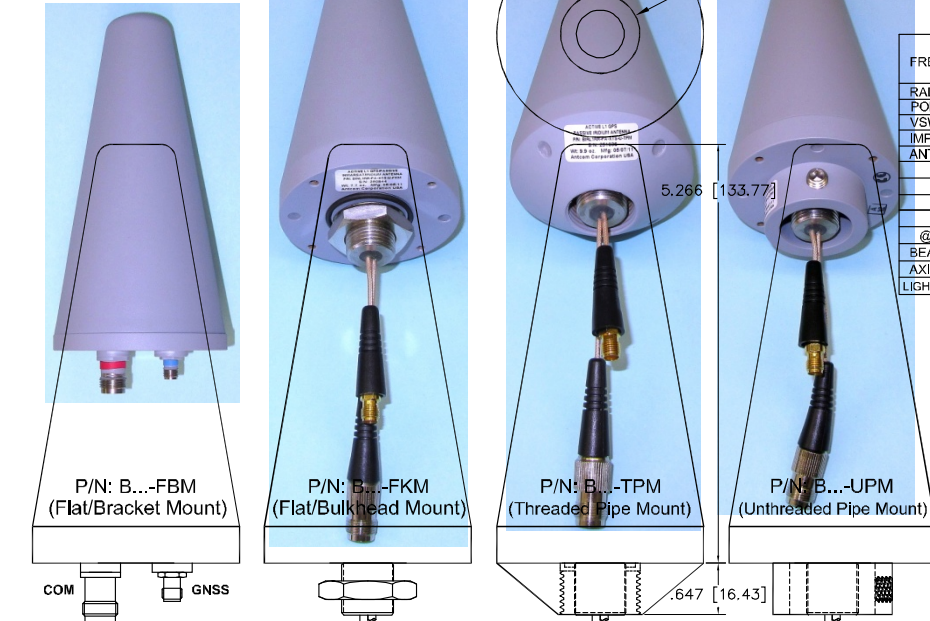
Quad-Band (GSM/PCS)/Wi-Fi/S/C-Band/ GPS: P/N: **B/LoLXXVR-PA-XTS-U-XXX**,

for Buoy, Marines, Underwater, Ground, Weather Balloon, and Helicopter Applications

Also Available in other Mounting Configurations of 3G, 4G, 42G, 5G, S5, Mini-Arinc, and Arinc-743 Antenna Series



NOTICE OF PROPRIETARY RIGHTS
THIS DOCUMENT CONTAINS CONFIDENTIAL, PROPRIETARY DATA INCLUDING TRADE SECRETS PROPRIETARY TO ANTCOM CORP. DISCLOSURE OF THIS DATA TO YOU IS EXPRESSLY CONDITIONED UPON YOUR AGREEMENT THAT YOU WILL MAINTAIN THE CONFIDENTIALITY OF THIS INFORMATION AND THAT YOU WILL NOT REPRODUCE, COPIY, OR TRANSMIT THIS INFORMATION IN ANY MANNER WITHOUT THE WRITTEN CONSENT OF ANTCOM CORP.



COM & GNSS FREQUENCY (GHz):	POLARIZATION:	LNA:	COM/GNSS Female Connector:	COLOR: U: TEFLON COATED GRAY for MARINES/BUOY APP
IN L1: COM=Inmarsat/Iridium; GNSS=L1GPS RL1: COM=Iridium; GNSS=L1GPS	RR: RHCP/RHCP	P: PASSIVE	T: TNC; F: F	-1: GLOSS WHITE #17925 PER FED-STD-595B PAINT
TL1: COM=Thuraya/Tx-Globalstar; GNSS=L1GPS	LR: LHCP/RHCP	A: with LNA/FILTERS for Rx only VERSIONS	S: SMA; SMB; SMBR; B: BNC	-2: LUSTERLESS GRAY #36320 PER FED-STD-595B PAINT
Lo L1: COM=QUAD-BAND (GSM/PCS)/L-Band/Locata/Wi-Fi/S/C-Band; GNSS=L1GPS	VR: Vertical/RHCP		M: MCX; MM; MMCX; MMR; MMCX-R	-3: OLIVE DRAB GREEN #31094 PER FED-STD-595B PAINT
Change "L1" to "L1L2" for GNSS=L1L2 GPS, to "G3" for GNSS=L1GPS/Glonass/L-Band/B1 to "G5" for GNSS=L1L2 GPS/Glonass/L-Band/B1/B3/B2/L5			N: NIN/Bulkhead	-4: LUSTERLESS BLACK #37038 PER FED-STD-595B PAINT
			SMC, SSMC, SSMB, SSMA	-5: TAN; H: FS 23448 or 33446; FED-STD-595 PAINT

ELECTRICAL:	COMMON SPECIFICATIONS:										
	GNSS PORT: of either L1, or L1L2, or G3, or G5 Frequencies					COM PORT: of either Inmarsat/Iridium, or Iridium, or Thuraya, or Quad-Band....					
FREQUENCY (MHz):	L1 GPS E5/E5a/E5b (SUI/Bo) L1RNSS	L2 GPS B2 Compass	L2 GLONASS C6 Galileo B3 Compass	Orbita-L-Band L6 Galileo B1 Compass	L1 GPS E1 E2 Galileo L1 IRNSS	L1 GLONASS	Rx Inmarsat or Thuraya	Tx Inmarsat or Thuraya	Iridium or Thuraya	Tx Globalstar	QUAD-BAND (GSM/PCS) L-Band Wi-Fi/S/C-Band
	1176.4 ± 12 1191.5 ± 27 1176.4 ± 15	1227.60 ± 12 1207.14 ± 10	1252.5 ± 7.5 1278.7 ± 12 1268.5 ± 10	1542.5 ± 14 1542.5 ± 5 1561.1 ± 10	1575.4 ± 15 1575.4 ± 17 1575.4 ± 12	1609 ± 7.0	1542.5 ± 17	1642.5 ± 17	1610-1626.5	1600-1626.5	1710-1990 1600-1690 2800-2900 4400-5200
RADIATION PATTERN:	HEMISPHERICAL										
POLARIZATION:	RHCP					RHCP or LHCP					
VSWR:	< 2.0:1										
IMPEDANCE:	50 ohms										
ANTENNA GAIN (dBi):	Free Space										
@ 90 ° ZENITH:	- 7	+ 0.5	- 0.8	+ 1.9	+ 4.1	+ 2.0	+ 0.7	- 0.3	+ 0.1		
@ 10 ° Elevation:	- 13	- 5.6	- 7.1	- 5.0	- 2.8	- 5.1	- 1.6	- 1.9	- 1.6		
@ 20 ° Elevation:	- 11	- 3.9	- 5.4	- 3.9	- 1.9	- 4.1	- 0.8	- 1.1	- 0.8		(0-3.8) dBi
@ 30 ° Elevation:	- 10	- 2.6	- 4.3	- 2.6	- 0.4	- 2.6	- 0.2	- 0.8	- 0.7		
@ 60 - 90 ° Elevation:	> - 8	> - 1	> - 2.4	> + 0.8	> 2.9	> + 0.8	> + 0.2	> + 1.6	> - 0.7		
BEAM WIDTH (3dB):	105 Deg.	105 Deg.	90 Deg.	95 Deg.	95 Deg.	95 Deg.	173 Deg.	180 Deg.	180 Deg.	OMNI	
AXIAL RATIO (dB):	1.5	1	1	1	1	2	1 to 3	1 to 3	1 to 3	N/A	
LIGHTNING PROTECTION:	DC GROUNDING										

LNA OPTION (for GNSS or GNSS/COM=Rx only VERSIONS (-A-)):

LNA GAIN (OPTION):	33 dB
LNA NOISE FIGURE:	3.0 dB
LNA P1dB Out:	+13 dBm
LNA DC POWER:	(2.5 to 24) V / < 50mA
POWER HANDLING:	PASSIVE: 10W; LNA ACTIVE: 1 Watt CW

MECHANICAL:

SIZE:	DIAMETER: 2.600in. [66 mm] HEIGHT: 5.266 in. [133 mm]
WEIGHT:	< 10oz. (283g)
FINISH:	HERMETICALLY SEAL & TEFLON COATED
MATERIAL:	6061-T6 ALUMINUM ALLOY BASE & RUGGEDIZED RADOME IMPACT, ABRASION, UV, SOLVENT, SKYDROL, CORROSION RESISTANCE, AND FIRE RETARDANT
CONNECTOR:	COM PORT: TNC FEMALE; GNSS PORT: SMA FEMALE (OPTION: TNC, F, SMA, BNC, N, MCX, MMCX)
ENVIRONMENTAL:	TEMPERATURE: -95 °F to +194 °F [-70 °C TO +90 °C] -700ft to +70,000 ft. (for -U-FBM/-U-FKM/-U-TPM, from Mounting)
	VIBRATION: 30 G's HERMETICALLY SEAL

FEDERAL & MILITARY SPECIFICATIONS:

FAA TSO-C144, DO-160D, D0-228, MIL-C-5541, MIL-E-5400, MIL-L-45208A, MIL-STD-810, MIL-STD-461E/F, AND SAE J1455

ACCEPTANCE TEST PROCEDURE: ATP-GPS-L1L2-100

M8-1.25 Set Screw P/N: 92015A139 (Item 573)	5
ø1.075 [ø27.31] will Fit in 1-14 UNS PIPE & 3/4 NPT PIPE	4
	3
	2
1 Additional SILICON GASKET (Item 539a) for -FBM/-FKM	1

QUANTITY REQD	DESCRIPTION	PARTS LIST	REV
			5
			4
			3
			2
			1

UNLESS OTHERWISE SPECIFIED DIMENSIONS ARE IN INCHES
FRACTIONS ARE 16ths UNLESS NOTED OTHERWISE
TOLERANCES ARE: ANGLES ± 1°
± 1/64
XXX .005 ± 1°
REMOVE ALL BURRS
BREAK EXTERNAL EDGES .005 TO .010
FILET R .005 TO R.000
SCREW THREADS PER MIL-S-8879
DAYS ON A COMMON 24 HOUR
MACHINED SURFACES
DO NOT SCALE DRAWING

ANTCOM CORP. TORRANCE CALIFORNIA
(Inmarsat/Iridium, or Iridium, or Thuraya/Tx-Globalstar or Tx-Globalstar or Quad-Band (GSM/PCS)/L-Band/Locata/Wi-Fi/S/C-Band) & (L1-GPS, or L1-GPS/Glonass/L-Band/B1, or L1L2-GPS, or L1L2-GPS/Glonass/B1/B3/B2/L5) Antenna
DRAWN: [Signature]
CHECKED: [Signature]
DESIGNED: [Signature]
APPROVED: S. HUYNH April-11-11
REV: [Signature]
SCALE: 1/1
SHEET 1 OF 1