



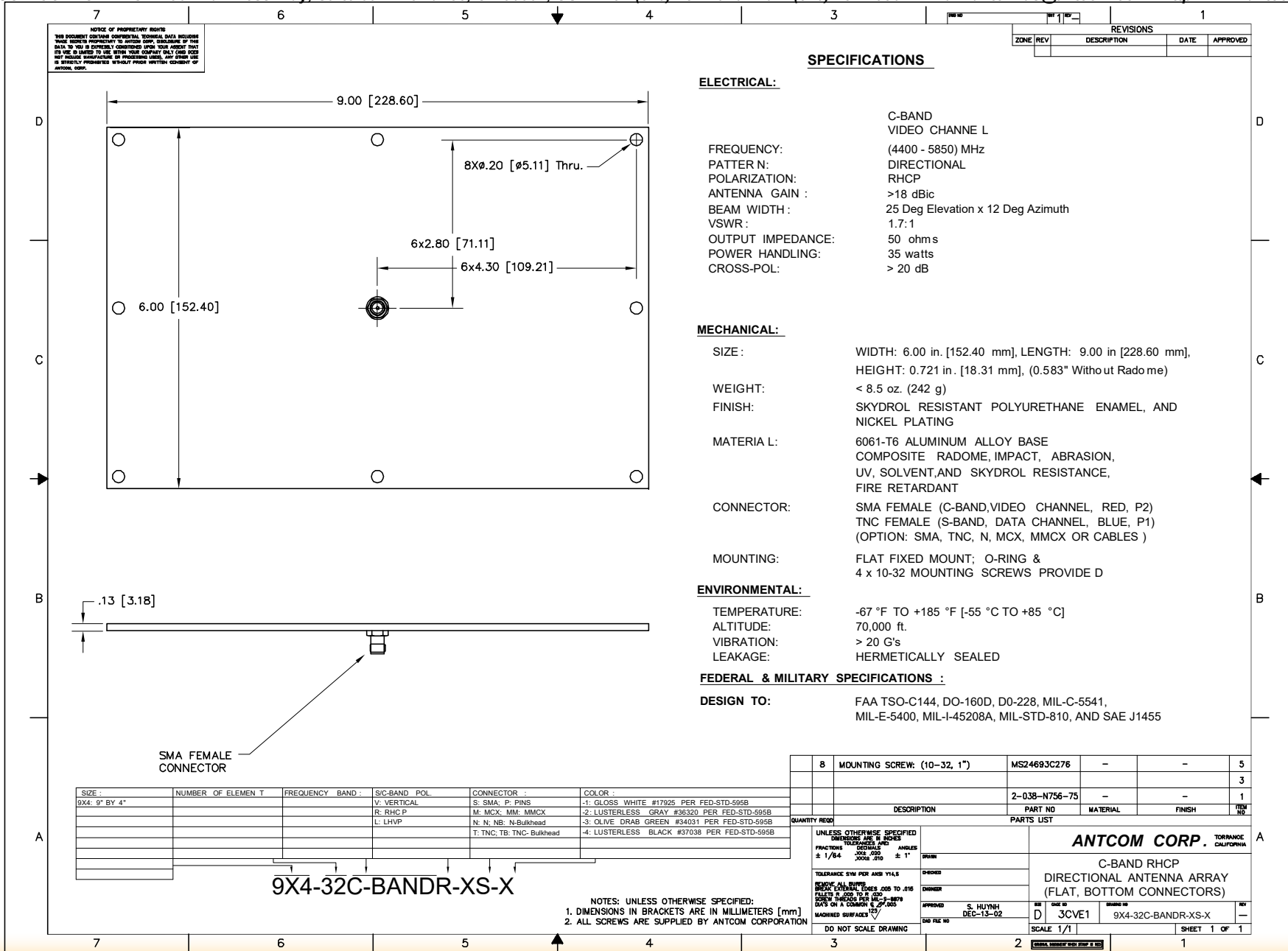
**Ant 1. C-Band (4.4-4.6) GHz Circularly Polarized Directional Antenna Array (32 Elements)**  
**(9" x 6" x 0.13"), Flat, Bottom Connector Configuration,**  
**P/N: 9x4-32-C-BANDR-XS-X**



ISO 9001:2008/FAA Approved Facility

Antenna Mounts/Adapters: <http://www.antcom.com/documents/catalogs/PeripheralAntennaProducts2.pdf>

ANTCOM CORPORATION . 367 Van Ness Way, Suite 602 . Torrance, CA 90501, USA . Tel: (310) 782-1076 . Fax: (310) 782-1086 . E-mail: [antennas@antcom.com](mailto:antennas@antcom.com) . <http://www.antcom.com>



NMO Connector Option is Now Available for Some Antennas