



FAA Approved Facility

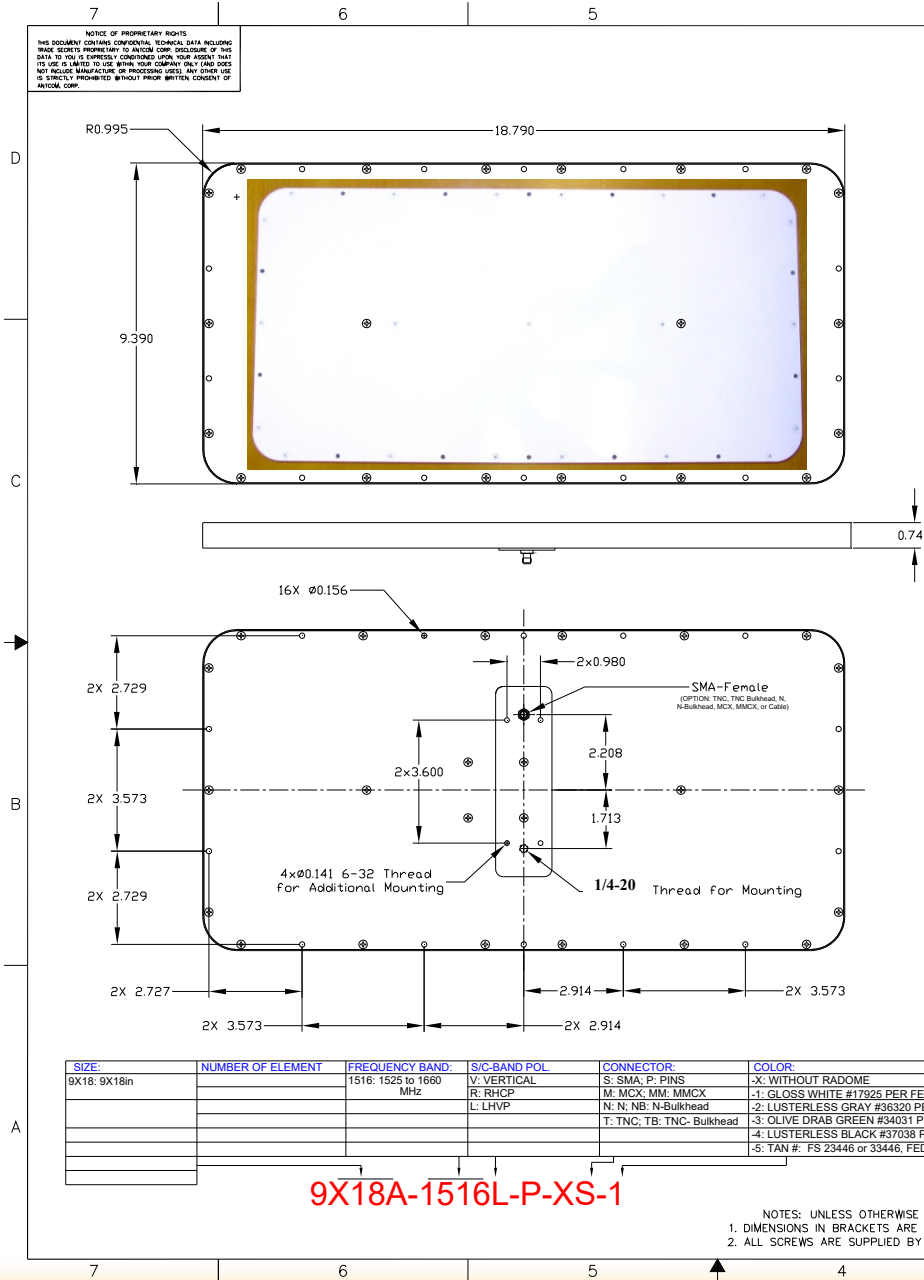
# RHCP-Inmarsat Antenna Array, P/N: 9x18A-1.6R-P-XS-1 or LHCP-Thuraya Antenna Array, P/N: 9x18A-1.6L-P-XS-1, (9 x 18 x 0.6)in, Flat Panel, Back Mount Configurations

Antenna Mounts: <http://www.antcom.com/documents/catalogs/PeripheralAntennaProducts2.pdf>



ANTCOM CORPORATION . 367 Van Ness Way, Suite 602 . Torrance, CA 90501 . Tel: (310) 782-1076 . Fax: (310) 782-1086 . E-mail: [antennas@antcom.com](mailto:antennas@antcom.com) . <http://www.antcom.com>

**NOTICE OF PROPRIETARY RIGHTS**  
THIS DOCUMENT CONTAINS CONFIDENTIAL TECHNICAL DATA INCLUDING TRADE SECRETS PROPRIETARY TO ANTCOM CORP. DISCLOSURE OF THIS DATA TO ANY OTHER PARTY IS EXPRESSLY PROHIBITED. YOUR AGREEMENT TO USE IS LIMITED TO USE WITHIN YOUR COMPANY ONLY (AND DOES NOT INCLUDE MANUFACTURE OR REPRODUCTION). ANY OTHER USE IS EXPRESSLY PROHIBITED WITHOUT PRIOR WRITTEN CONSENT OF ANTCOM CORP.



## SPECIFICATIONS

REVISIONS				
ZONE	REV	DESCRIPTION	DATE	APPROVED

**ELECTRICAL:**  
 L-BAND  
 FREQUENCY: (1.5250 -1.6605) GHz  
 PATTERN: DIRECTIONAL  
 POLARIZATION: LHCP  
 ANTENNA GAIN : >15 dBic  
 BEAM WIDTH (deg): 35  
 VSWR: 1.5:1  
 OUTPUT IMPEDANCE: 50 ohms  
 POWER HANDLING: 100 watts  
 DC GROUNDING: YES

**AUTO TRACK OPTION:**  
 TRACKING: 360 Deg Azimuth @ (0.04 to 0.9) Deg/Sec  
 TRACKING MODE: Sum/Different Mode, or Beacon Signal Level: >100 mV Demodulated DC  
 ACQUISITION TIME: <35 sec @ (10 deg/sec)  
 DC POWER SUPPLY: +24 Vdc/3 Amp.

**MECHANICAL:**  
 SIZE: 9.6in x 18.9in x 0.75in  
 WEIGHT: 1.35 lb (612 grams)  
 FINISH: SKYDROL RESISTANT POLYURETHANE ENAMEL, AND BLACK ANODIZED  
 MATERIAL: 6061-T6 ALUMINUM ALLOY BASE COMPOSITE RADOME, IMPACT, ABRASION, UV, SOLVENT AND SKYDROL RESISTANCE, FIRE RETARDANT  
 CONNECTOR: SMA FEMALE CONNECTING TO 10m COMBINER SMB CABLE (OPTION: SMB, SMA, N, MCX, MMCX OR CABLES)

**ENVIRONMENTAL:**  
 TEMPERATURE: -67 °F TO +185 °F [-55 °C TO +85 °C]  
 ALTITUDE: 30,000 ft.  
 VIBRATION: > 20 G's  
 LEAKAGE: HERMETICALLY SEALED

**FEDERAL & MILITARY SPECIFICATIONS:**  
**DESIGN TO:** FAA TSO-C144, DO-160D, D0-228, MIL-C-5541, MIL-E-5400, MIL-I-45208A, MIL-STD-810, AND SAE J1455

SIZE:	NUMBER OF ELEMENT	FREQUENCY BAND:	S/C-BAND POL:	CONNECTOR:	COLOR:
9X18: 9X18in		1516: 1525 to 1660 MHz	V: VERTICAL R: RHCP L: LHCP	S: SMA; P: PINS M: MCX; MM: MMCX N: N; NB: N-Bulkhead T: TNC; TB: TNC- Bulkhead	X: WITHOUT RADOME -1: GLOSS WHITE #17925 PER FED-STD-595B -2: LUSTERLESS GRAY #36320 PER FED-STD-595B -3: OLIVE DRAB GREEN #34031 PER FED-STD-595B -4: LUSTERLESS BLACK #37038 PER FED-STD-595B -5: TAN #: FS 23446 or 33446, FED-STD-595

**9X18A-1516L-P-XS-1**

NOTES: UNLESS OTHERWISE SPECIFIED:  
 1. DIMENSIONS IN BRACKETS ARE IN MILLIMETERS [mm]  
 2. ALL SCREWS ARE SUPPLIED BY ANTCOM CORPORATION

QUANTITY	DESCRIPTION	PART NO	FINISH	ITEM NO.
1	OPTIONAL XIT RF CABLE	SMA-M-LRM200-XIT-SMB-M	-	3
1	1/3-20 ANTENNA MOUNT	HGX-PMTO3	-	1

UNLESS OTHERWISE SPECIFIED DIMENSIONS ARE IN INCHES  
 FRACTIONS DECIMALS  
 ± 1/64 ± 0.002 ± 0.010  
 TOLERANCE 5/16 PER ANSI Y14.5  
 REMOVE ALL BURRS  
 BREAK EXTERNAL EDGES .005 TO .015  
 FILED TO .005 TO .015  
 SURFACE FINISH PER ASME B46.1  
 DATS ON A COMMON 1/2" DIA  
 MACHINED SURFACES  
 DO NOT SCALE DRAWING

**ANTCOM CORP.** TORRANCE CALIFORNIA  
 (1.525 - 1.660) GHz L-BAND LHCP THURAYA ANTENNA ARRAY

APPROVED: S. HUYNH June-08-08  
 DATE: June-08-08  
 SCALE: 1/1  
 SHEET: 1 OF 1