



FAA Approved Facility

8-Elements (16 Channels) RHCP/LHCP L1/L2 GPS Antenna Array

P/N: 9X18A-L1L2RL-P-XS16-1

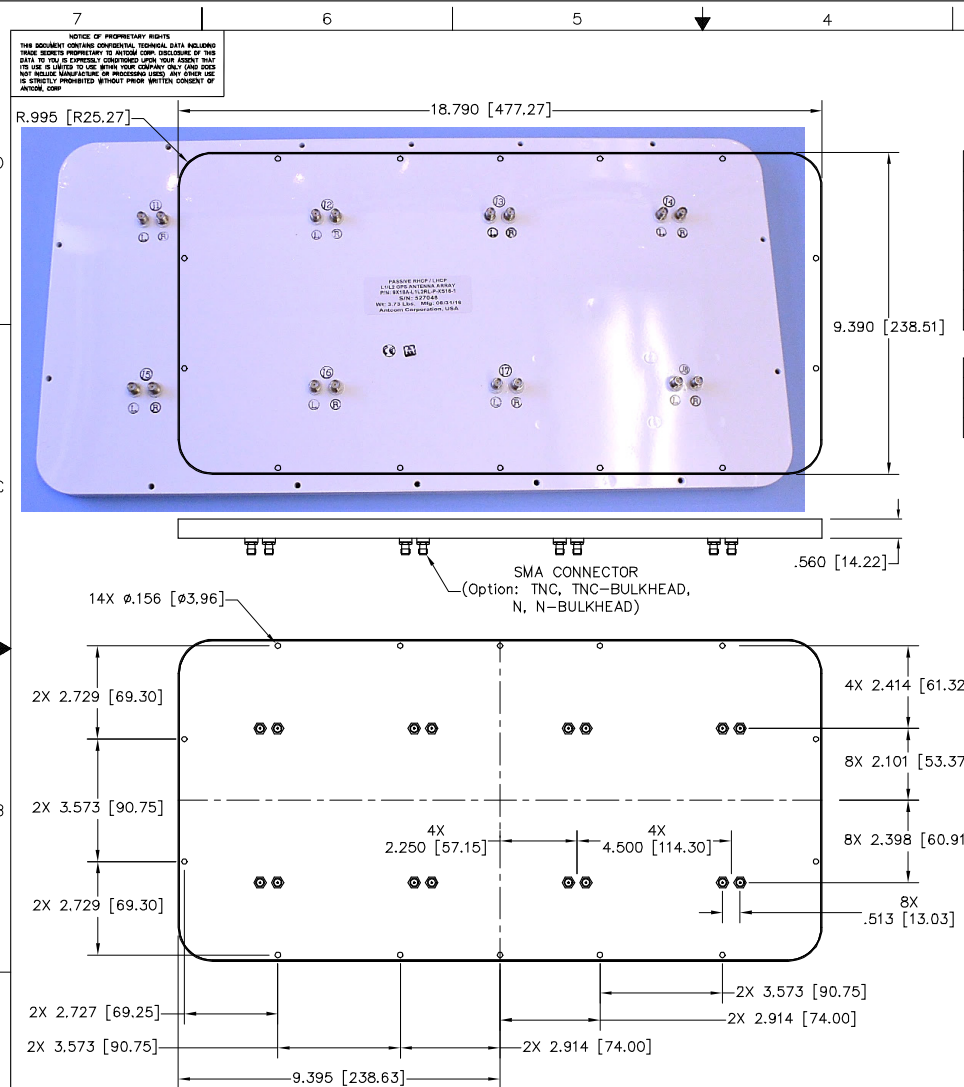
(9 x 18 x 0.6)in, Flat Panel, Front Mount Configuration

“-PL-” or “-AL-” for Limiter Options for High Power Pulse Protection



ANTCOM CORPORATION . 367 Van Ness Way, Suite 602 . Torrance, CA 90501 . Tel: (310) 782-1076 . Fax: (310) 782-1086 . E-mail: antennas@antcom.com . http://www.antcom.com

Wide Band GNSS Option Is Available



P/N: 9X18A-L1L2RL-P-XS16-1

FREQUENCY BAND: 1215: L1L2 1115: L1L2L5 1415: (1.4 to 1.9) GHz 1516: 1.525 to 1.660 GHz XXYY: X.X GHz TO Y.Y GHz	S/C-BAND POL. V: VERTICAL R: RHCP L: LHVP	LNA: A: ACTIVE P: PASSIVE	CONNECTOR: S: SMA; P: PINS M: MCX; MM: MMCX N: N; NB: N-Bulkhead T: TNC; TB: TNC- Bulkhead	COLOR: -X: WITHOUT RADOME -1: GLOSS WHITE #17925 PER FED-STD-595B -2: LUSTERLESS GRAY #36320 PER FED-STD-595B -3: OLIVE DRAB GREEN #34031 PER FED-STD-595B -4: LUSTERLESS BLACK #37036 PER FED-STD-595B -5: TAN #; FS 23446 or 33446, FED-STD-595
---	--	---------------------------------	--	---

SPECIFICATIONS

REVISIONS		DATE	APPROVED
ZONE	REV	DESCRIPTION	

ELECTRICAL:

FREQUENCY:	L1L2
PATTERN:	DIRECTIONAL
POLARIZATION:	RHCP / LHCP
ANTENNA GAIN :	13 dB (Array); 3 dB (Element)
BEAM WIDTH (deg):	20 X 40 (Array); 106 - 114 (Element)
VSWR:	2.0:1
OUTPUT IMPEDANCE:	50 ohms
POWER HANDLING:	1 watts
DC GROUNDING:	YES

LNA OPTION:

LNA GAIN:	33 dB (P1dBout = +13 dBm)
LNA NOISE FIGURE:	2.2 dB
LNA VOLTAGE:	(+2.5 to +24) Volts DC
LNA DRAWING CURRENT:	< 30 mA

MECHANICAL:

SIZE:	9.39in x 18.79in x 0.56in
WEIGHT:	2.33 lb (1.06 Kg)
FINISH:	SKYDROL RESISTANT POLYURETHANE ENAMEL, BASE IRIDIUM PER MIL-C-5441F
MATERIAL:	6061-T6 ALUMINUM ALLOY BASE COMPOSITE RADOME, IMPACT, ABRASION, UV, SOLVENT, AND SKYDROL RESISTANCE, FIRE RETARDANT
CONNECTOR:	SMA FEMALE (OPTION: TNC, TNC-BULKHEAD, N, N-BULKHEAD)

ENVIRONMENTAL:

TEMPERATURE:	-67 °F TO +185 °F [-55 °C TO +85 °C]
ALTITUDE:	30,000 ft.
VIBRATION:	> 20 G's
LEAKAGE:	HERMETICALLY SEALED

FEDERAL & MILITARY SPECIFICATIONS:

DESIGN TO: FAA TSO-C144, DO-160D, D0-228, MIL-C-5541, MIL-E-5400, MIL-I-45208A, MIL-STD-810, AND SAE J1455

QUANTITY	DESCRIPTION	PART NO	FINISH	REV NO
				2
				1

PARTS LIST		ANTCOM CORP. TORRANCE CALIFORNIA	
L1/L2 GPS ANTENNA ARRAY			
REV	DATE	BY	REV
D	3CVE1	S. HUYNH	1
SCALE 1/1		SHEET 1 OF 1	