



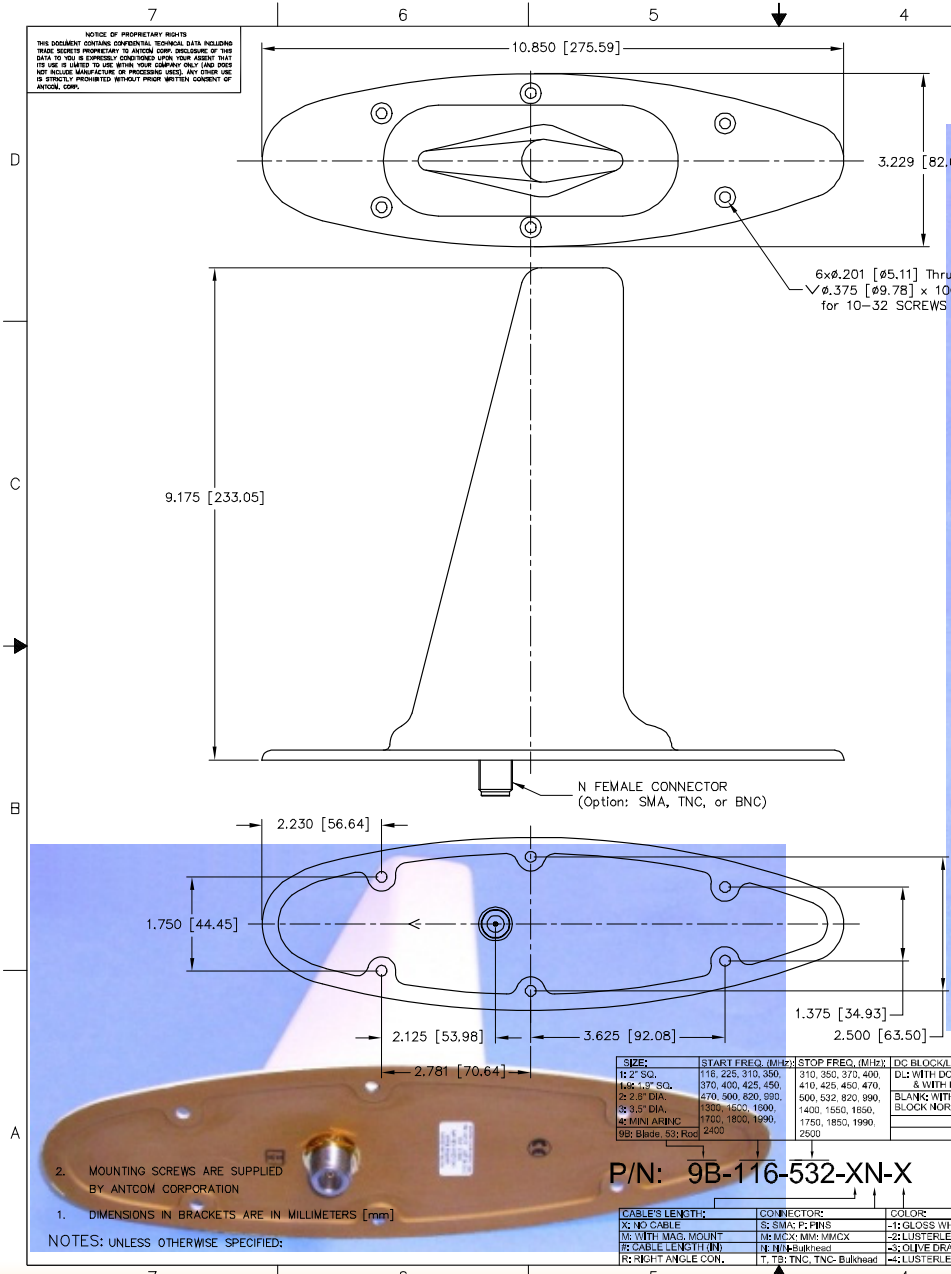
Dual VHF/UHF Antenna

(136 to 870) MHz: P/N: 9B-136-870-XN-X (N Connector), 9B-136-870-XS-X (SMA), 9B-136-870-XT-X (TNC)
 (116 to 532) MHz: P/N: 9B-116-532-XN-X (N Connector), 9B-116-532-XS-X (SMA), 9B-116-532-XT-X (TNC)
 P/N: 9B-116-532-XN-X-**IKW** (N Connector with **1Kwatts CW Option**)



ISO 9001:2008/FAA Approved Facility Antenna Mounts/Adapters: <http://www.antcom.com/documents/catalogs/PeripheralAntennaProducts2.pdf>

ANTCOM CORPORATION . 367 Van Ness Way, Suite 602 . Torrance, CA 90501, USA . Tel: (310) 782-1076 . Fax: (310) 782-1086 . E-mail: antennas@antcom.com . <http://www.antcom.com>



SPECIFICATIONS

REV		DESCRIPTION	DATE	APPROVED
A	INITIAL		08/24/13	S.H
B	GAIN		07/17/17	S.H

ELECTRICAL:

FREQUENCY:	VHF/UHF: (116-532) Mhz			
PATTERN:	OMNIDIRECTIONAL			
POLARIZATION:	VERTICAL			
ANTENNA GAIN: (On 4ft. Ground Plane)	MHz	dBi	MHz	dBi
	116	-9.7	260	-2.2
	160	-9.5	360	-1.2
	180	-2.2	440	+2.4
	200	-5.7	532	+1.2
VSWR:	(116-400) MHz: < 2.6:1 (410-532) MHz: < 2.0:1			
OUTPUT IMPEDANCE:	50 ohms			
POWER HANDLING:	100 watts			
LIGHTNING PROTECTION:	DC GROUNDED			

MECHANICAL:

SIZE: WIDTH 3.25 in. [82.5 mm], LENGTH 10.87in. [276], HEIGHT 9.175 in. [233 mm]
 WEIGHT: 18.56 oz. (526g)
 FINISH: SKYDROL RESISTANT POLYURETHANE ENAMEL BASE IRIDITE PER MIL-C-5441F
 COLOR: LUSTERLESS GRAY #36320 PER FED-STD-595B
 GLOSS WHITE #17925 PER FED-STD-595B
 OLIVE DRAB GREEN #34031 PER FED-STD-595B
 LUSTERLESS BLACK #37038 PER FED-STD-595B
 MATERIAL: 6061-T6 ALUMINUM ALLOY BASE COMPOSITE RADOME, IMPACT, ABRASION, UV, SOLVENT, SKYDROL RESISTANCE, AND FIRE RETARDANT
 CONNECTOR: N FEMALE (OPTION: SMA, TNC, N, or BNC)

ENVIRONMENTAL:

TEMPERATURE: -67°F TO +185°F [-55°C TO +85°C]
 ALTITUDE: 70,000 ft.
 VIBRATION: 14 G's
 LEAKAGE: HERMETICALLY SEALED

FEDERAL & MILITARY SPECIFICATIONS:

DESIGN TO: DO-160D; MIL-C-5541, MIL-E-5400, MIL-I-45208A, AND MIL-STD-810

SIZE	START FREQ. (MHz)	STOP FREQ. (MHz)	DC BLOCK/LIMITER	LNA
1/2" SQ.	116, 225, 310, 350	310, 350, 370, 400	D1: WITH DC BLOCK & WITH LIMITER	A1: WITH +23 dB LNA
1/4" x 1/2" SQ.	370, 400, 425, 450	410, 425, 450, 470	BLANK WITHOUT DC BLOCK NOR LIMITER	A2: WITH +43 dB LNA
2" x 2" SQ.	470, 500, 820, 850	500, 520, 820, 850		B: WITHOUT LNA
3" x 3" DIA.	1300, 1500, 1800	1400, 1550, 1850		
4" MINI ARINC	1700, 1800, 1900	1750, 1850, 1900		
9B: Blade, S3; Rod	2400	2500		

P/N: 9B-116-532-XN-X

REV	DESCRIPTION	PART NO	SPECIFICATION	MATERIAL	FINISH	TRM NO
6	SCREW, MOUNTING	MS24693C273				2
-1	DESCRIPTION					1

UNLESS OTHERWISE SPECIFIED DIMENSIONS ARE IN INCHES		ANTCOM CORP. TORRANCE, CALIFORNIA	
FRACTIONS TO DECIMALS	DECIMALS TO FRACTIONS	DATE	REV
1/16" = .0625"	.001" = 1/1000"	APRIL-16-12	
1/32" = .03125"	.005" = 1/200"	APRIL-16-12	
3/32" = .09375"	.010" = 1/100"	JULY-17-17	
1/8" = .125"	.020" = 1/50"	JULY-17-17	
3/16" = .1875"	.030" = 1/33.33"	JULY-17-17	
1/4" = .250"	.040" = 1/25"	JULY-17-17	
5/16" = .3125"	.050" = 1/20"	JULY-17-17	
3/8" = .375"	.060" = 1/16.67"	JULY-17-17	
7/16" = .4375"	.080" = 1/12.5"	JULY-17-17	
1/2" = .500"	.100" = 1/10"	JULY-17-17	
5/8" = .625"	.125" = 1/8"	JULY-17-17	
3/4" = .750"	.150" = 1/6.67"	JULY-17-17	
7/8" = .875"	.200" = 1/5"	JULY-17-17	
1" = 1.000"	.250" = 1/4"	JULY-17-17	
1 1/8" = 1.125"	.3125" = 1/3.2"	JULY-17-17	
1 1/4" = 1.250"	.375" = 1/2.67"	JULY-17-17	
1 3/8" = 1.375"	.4375" = 1/2.27"	JULY-17-17	
1 1/2" = 1.500"	.500" = 1/2"	JULY-17-17	
1 5/8" = 1.625"	.5625" = 1/1.78"	JULY-17-17	
1 3/4" = 1.750"	.625" = 1/1.6"	JULY-17-17	
1 7/8" = 1.875"	.6875" = 1/1.45"	JULY-17-17	
2" = 2.000"	.750" = 1/1.33"	JULY-17-17	
2 1/8" = 2.125"	.8125" = 1/1.23"	JULY-17-17	
2 1/4" = 2.250"	.875" = 1/1.14"	JULY-17-17	
2 3/8" = 2.375"	.9375" = 1/1.07"	JULY-17-17	
2 1/2" = 2.500"	1.000" = 1/1"	JULY-17-17	
2 5/8" = 2.625"	1.0625" = 1/0.94"	JULY-17-17	
2 3/4" = 2.750"	1.125" = 1/0.89"	JULY-17-17	
2 7/8" = 2.875"	1.1875" = 1/0.84"	JULY-17-17	
3" = 3.000"	1.250" = 1/0.8"	JULY-17-17	
3 1/8" = 3.125"	1.3125" = 1/0.76"	JULY-17-17	
3 1/4" = 3.250"	1.375" = 1/0.73"	JULY-17-17	
3 3/8" = 3.375"	1.4375" = 1/0.69"	JULY-17-17	
3 1/2" = 3.500"	1.500" = 1/0.67"	JULY-17-17	
3 5/8" = 3.625"	1.5625" = 1/0.64"	JULY-17-17	
3 3/4" = 3.750"	1.625" = 1/0.62"	JULY-17-17	
3 7/8" = 3.875"	1.6875" = 1/0.59"	JULY-17-17	
4" = 4.000"	1.750" = 1/0.57"	JULY-17-17	
4 1/8" = 4.125"	1.8125" = 1/0.55"	JULY-17-17	
4 1/4" = 4.250"	1.875" = 1/0.53"	JULY-17-17	
4 3/8" = 4.375"	1.9375" = 1/0.52"	JULY-17-17	
4 1/2" = 4.500"	2.000" = 1/0.5"	JULY-17-17	
4 5/8" = 4.625"	2.0625" = 1/0.48"	JULY-17-17	
4 3/4" = 4.750"	2.125" = 1/0.47"	JULY-17-17	
4 7/8" = 4.875"	2.1875" = 1/0.46"	JULY-17-17	
5" = 5.000"	2.250" = 1/0.44"	JULY-17-17	
5 1/8" = 5.125"	2.3125" = 1/0.43"	JULY-17-17	
5 1/4" = 5.250"	2.375" = 1/0.42"	JULY-17-17	
5 3/8" = 5.375"	2.4375" = 1/0.41"	JULY-17-17	
5 1/2" = 5.500"	2.500" = 1/0.4"	JULY-17-17	
5 5/8" = 5.625"	2.5625" = 1/0.39"	JULY-17-17	
5 3/4" = 5.750"	2.625" = 1/0.38"	JULY-17-17	
5 7/8" = 5.875"	2.6875" = 1/0.37"	JULY-17-17	
6" = 6.000"	2.750" = 1/0.36"	JULY-17-17	
6 1/8" = 6.125"	2.8125" = 1/0.35"	JULY-17-17	
6 1/4" = 6.250"	2.875" = 1/0.35"	JULY-17-17	
6 3/8" = 6.375"	2.9375" = 1/0.34"	JULY-17-17	
6 1/2" = 6.500"	3.000" = 1/0.33"	JULY-17-17	
6 5/8" = 6.625"	3.0625" = 1/0.33"	JULY-17-17	
6 3/4" = 6.750"	3.125" = 1/0.32"	JULY-17-17	
6 7/8" = 6.875"	3.1875" = 1/0.31"	JULY-17-17	
7" = 7.000"	3.250" = 1/0.31"	JULY-17-17	
7 1/8" = 7.125"	3.3125" = 1/0.30"	JULY-17-17	
7 1/4" = 7.250"	3.375" = 1/0.30"	JULY-17-17	
7 3/8" = 7.375"	3.4375" = 1/0.29"	JULY-17-17	
7 1/2" = 7.500"	3.500" = 1/0.29"	JULY-17-17	
7 5/8" = 7.625"	3.5625" = 1/0.28"	JULY-17-17	
7 3/4" = 7.750"	3.625" = 1/0.28"	JULY-17-17	
7 7/8" = 7.875"	3.6875" = 1/0.27"	JULY-17-17	
8" = 8.000"	3.750" = 1/0.27"	JULY-17-17	
8 1/8" = 8.125"	3.8125" = 1/0.26"	JULY-17-17	
8 1/4" = 8.250"	3.875" = 1/0.26"	JULY-17-17	
8 3/8" = 8.375"	3.9375" = 1/0.25"	JULY-17-17	
8 1/2" = 8.500"	4.000" = 1/0.25"	JULY-17-17	
8 5/8" = 8.625"	4.0625" = 1/0.25"	JULY-17-17	
8 3/4" = 8.750"	4.125" = 1/0.24"	JULY-17-17	
8 7/8" = 8.875"	4.1875" = 1/0.24"	JULY-17-17	
9" = 9.000"	4.250" = 1/0.24"	JULY-17-17	
9 1/8" = 9.125"	4.3125" = 1/0.23"	JULY-17-17	
9 1/4" = 9.250"	4.375" = 1/0.23"	JULY-17-17	
9 3/8" = 9.375"	4.4375" = 1/0.23"	JULY-17-17	
9 1/2" = 9.500"	4.500" = 1/0.22"	JULY-17-17	
9 5/8" = 9.625"	4.5625" = 1/0.22"	JULY-17-17	
9 3/4" = 9.750"	4.625" = 1/0.22"	JULY-17-17	
9 7/8" = 9.875"	4.6875" = 1/0.21"	JULY-17-17	
10" = 10.000"	4.750" = 1/0.21"	JULY-17-17	

- MOUNTING SCREWS ARE SUPPLIED BY ANTCOM CORPORATION
- DIMENSIONS IN BRACKETS ARE IN MILLIMETERS [mm]
- NOTES: UNLESS OTHERWISE SPECIFIED:

NMO Connector Option is Now Available for Some Antennas