

8-Element RHCP L1/L2 GPS Antenna Array

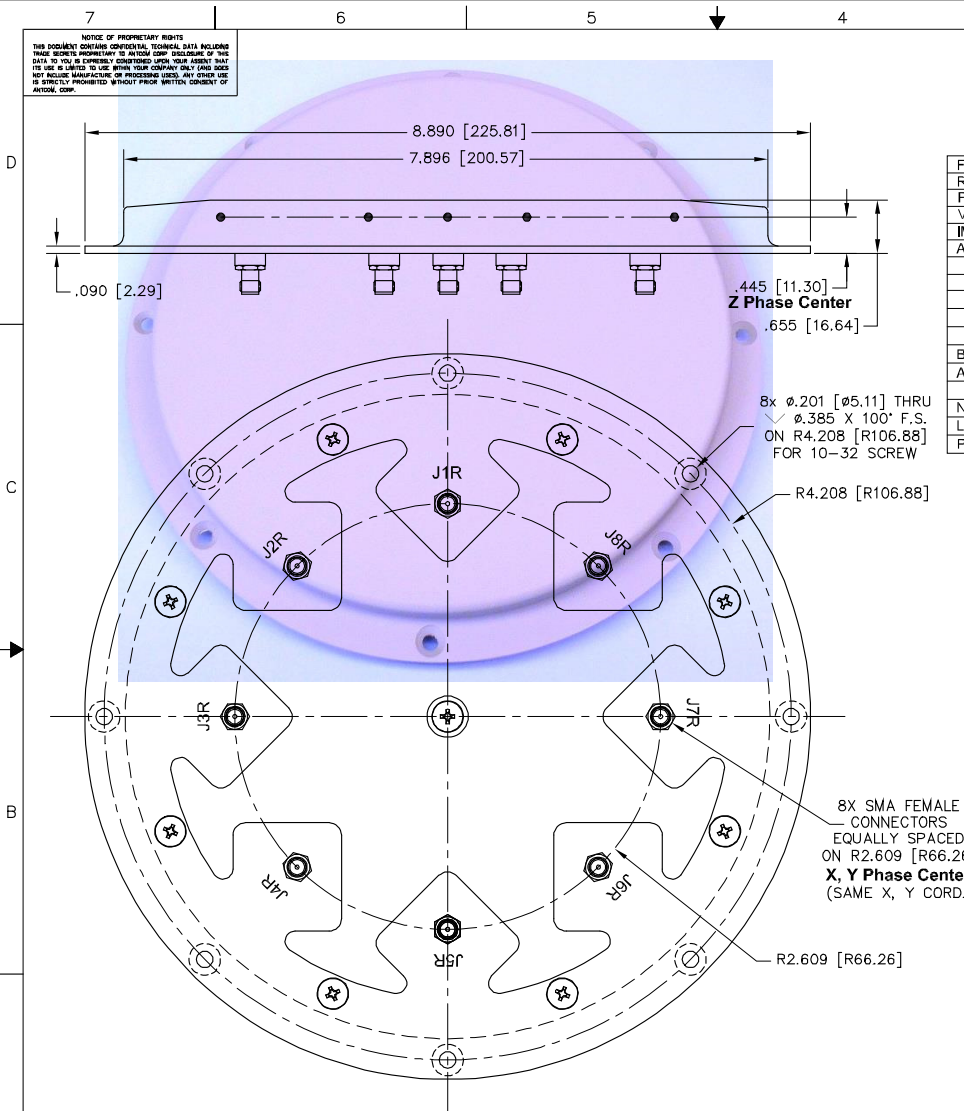
P/N: 8NF-8CG1215P-R-XS-X-1.2-RevB

(7.8" Dia. x 0.7" Thick)

“-PL-” or “-AL-” for Limiter Options for High Power Pulse Protection

ANTCOM CORPORATION . 367 Van Ness Way, Suite 602 . Torrance, CA 90501 . Tel: (310) 782-1076 . Fax: (310) 782-1086 . E-mail: antennas@antcom.com . http://www.antcom.com

Wide Band GNSS Option Is Available



P/N: 8NF-8CG1215P-R-XS-X-1.2-RevB

NUMBER OF ELEMENT:	CONFORMALITY:	FREQ. BAND:	LNA:	CONNECTOR:	COLOR:
SIZE (INCHES):	CC: CONFORMAL/CURVED	1215: L1/L2	A: WITH LNA	S: SMA; P: PINS	-1: GLOSS WHITE #17925 PER FED-STD-595B
	CF: CONFORMAL/FLAT	15: L1 ONLY	AL: WITH LNA/LIMITER	M: MCX; MM: MMCX	-2: LUSTERLESS GRAY #36320 PER FED-STD-595B
	NF: NOT CONFORMAL/FLAT		P: WITHOUT LNA	N, NB: N, N-Bulkhead	-3: OLIVE DRAB GREEN #34031 PER FED-STD-595B
	NC: NOT CONFORMAL/CURVED			T, TB: TNC, TNC-Bulkhead	-4: LUSTERLESS BLACK #37038 PER FED-STD-595B



QUANTITY	RECD	DESCRIPTION	PARTS LIST	PART NO	FINISH	REQ
8	-	MOUNTING SCREWS: 10-32, 3/8"		MS24693C270	-	1
-2	-1	DESCRIPTION				NEW

UNLESS OTHERWISE SPECIFIED DIMENSIONS ARE IN INCHES

FRACTIONS DECIMALS ANGLES

± 1/64 .004 .015 ± 1°

TOLERANCE 5V PER ANS Y14.5

REMOVE ALL BURRS

BREAK EDGES .005 TO .015

SMOOTH ALL SURFACES

SMOOTH SURFACES TO 320

WASHED SURFACES 12

DO NOT SCALE DRAWING

ANTCOM CORP. TORRANCE, CALIFORNIA

8 ELEMENT L1L2 GPS RHCP ANTENNA ARRAY

DATE: 11/18/13

APPREVED: S. HUYNH Dec-18-13

DATE: 11/18/13

APPREVED: P. TRAN Dec-18-13

DATE: 11/18/13

APPREVED: S. HUYNH Dec-18-13

FILE: 11/18/13

APPREVED: S. HUYNH Dec-18-13

SCALE: 1/1

SHEET: 1 OF 1

Antenna Mounts: http://www.antcom.com/documents/catalogs/PeripheralAntennaProducts2.pdf
Amplifiers/Power Divider/Combiner/Filters: http://www.antcom.com/documents/catalogs/PeripheralAntennaProducts1.pdf