



FAA Approved Facility

8-Elements RHCP L1/L2 GPS Antenna Array

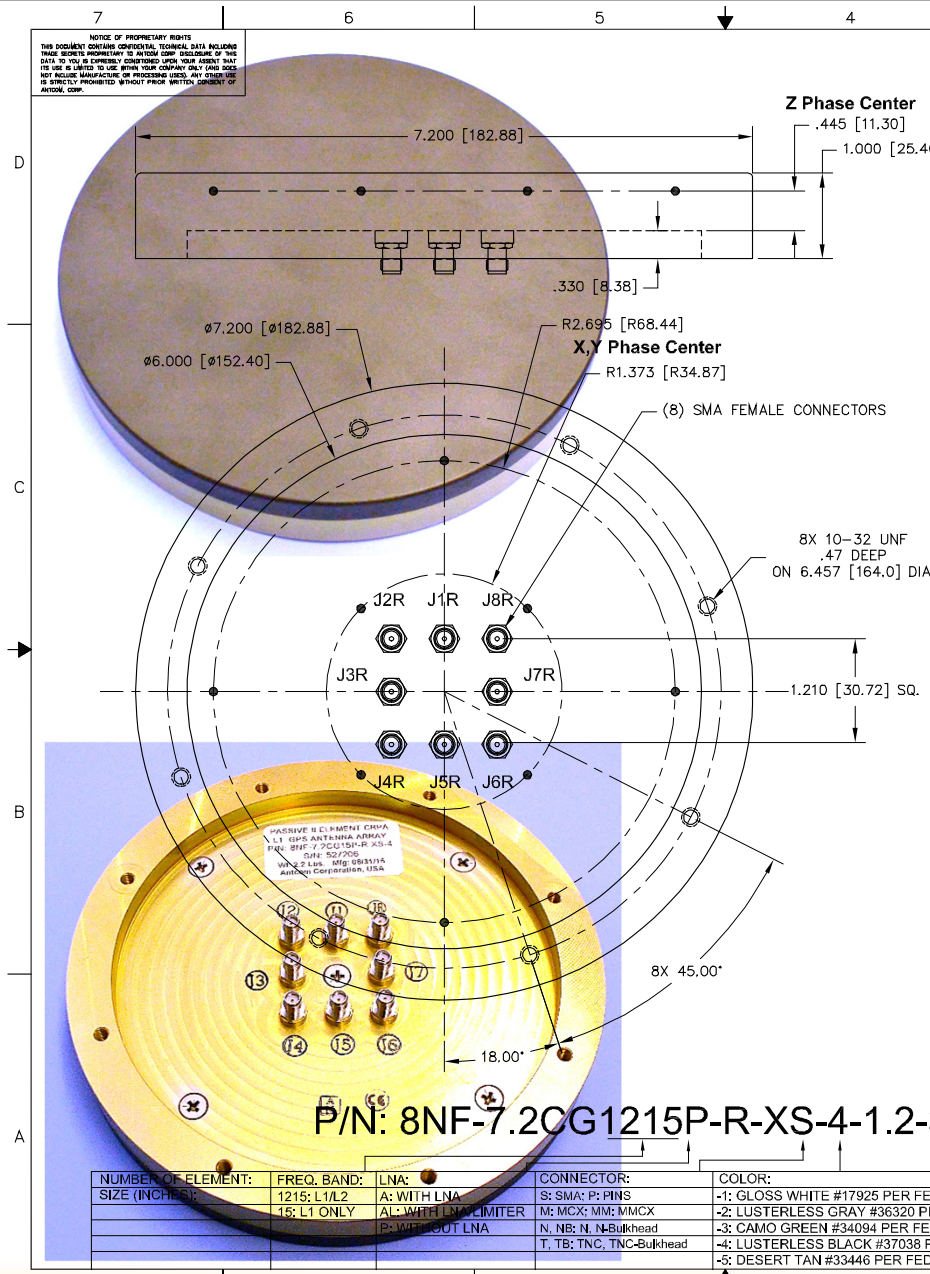
P/N: 8NF-7.2CG3ALF-R-XS-4-1.2-3 (Active L1 GPS /Glonass); P/N: 8NF-7.2CG5ALF-R-XS-4-1.2-3 (Active L1/L2 GPS/ Glonass)
 P/N: 8NF-7.2CG1215P-R-XS-4-1.2-3 (Passive, L1/L2); P/N: 8NF-7.2CG1215P-XSMP-4-1.2-3 (Passive, L1/L2, SMP)
 P/N: 8NF-7.2CG15P-R-XS-4-1.2-3 (Passive, L1 Only)

“-PL-” or “-AL-” for Limiter Options for High Power Pulse Protection



ANTCOM CORPORATION . 367 Van Ness Way, Suite 602 . Torrance, CA 90501 . Tel: (310) 782-1076 . Fax: (310) 782-1086 . E-mail: antennas@antcom.com . http://www.antcom.com

Wide Band GNSS Option Is Available



SPECIFICATIONS

REVISIONS		DATE	APPROVED
ZONE	REV	DESCRIPTION	

ELECTRICAL:

	L1: (1575.42 ±12) MHz			L2: (1227.60 ±12) MHz		
FREQUENCY:						
RADIATION PATTERN:	HEMISPHERICAL					
POLARIZATION:	RHCP			RHCP		
VSWR:	2:1			2:1		
IMPEDANCE:	50 ohms			50 ohms		
ANTENNA ELEMENT GAIN (dBic):	Free Space	3.5 in Dia.	4 ft G.P.	Free Space	3.5 in Dia.	4 ft G.P.
@ 90 ° (ZENITH):	+ 4.5	+ 5.4	+ 2.4	+ 2.5	+ 4.1	+ 5.6
@ 10 ° Elevation:	- 1.5	- 1.6	- 1.7	- 4.3	- 3.2	- 2.8
@ 20 ° Elevation:	0.0	0.0	+ 0.9	- 3.0	- 1.6	+ 0.5
@ 30 ° Elevation:	+ 1.1	+ 1.3	+ 2.0	- 1.5	- 0.3	+ 2.4
@ 60 - 90 ° Elevation:	> 3.0	> 4.2	> 2.5	> 1.7	> 2.7	> 3.6
BEAM WIDTH (3dB):	112 Deg.	102 Deg.	145 Deg.	104 Deg.	93 Deg.	80 Deg.
AXIAL RATIO:	2 dB			2 dB		
NULL DEPTH:	> 30 dB (Analog), 55-60 dB (Digital)					
LIGHTNING PROTECTION:	DC GROUNDING					
POWER HANDLING:	200 Watt CW					

MECHANICAL:

SIZE:	DIAMETER: 7.20 in. [182.88 mm] HEIGHT: 1.000 in. [25.40 mm] 1.72 lbs. (0.78 Kg)
WEIGHT:	1.72 lbs. (0.78 Kg)
FINISH:	SKYDROL RESISTANT POLYURETHANE ENAMEL BASE IRIDITE PER MIL-C-5441F
MATERIAL:	6061-T6 ALUMINUM ALLOY BASE COMPOSITE RADOME, IMPACT, ABRASION, UV, SOLVENT, SKYDROL RESISTANCE, AND FIRE RETARDANT
CONNECTOR:	SMA FEMALE (OPTION: TNC, TNC Bulkhead, N, N Bulkhead, MCX, MMCX, or Cable)

ENVIRONMENTAL:

TEMPERATURE:	-67 °F TO +185 °F [-55 °C TO +85 °C]
ALTITUDE:	70,000 ft.
VIBRATION:	> 30 G's
LEAKAGE:	HERMETICALLY SEAL

FEDERAL & MILITARY SPECIFICATIONS:

DESIGN TO:	FAA TSO-C144, DO-160D, DO-228, MIL-C-5541, MIL-E-5400, MIL-I-45208A, MIL-STD-810, AND SAE J1455
------------	--

ACCEPTANCE TEST PROCEDURE: ATP-GPS-L1L2-100

QUANTITY	DESCRIPTION	PARTS LIST	PART NO	FINISH	REQ
4	MOUNTING SCREWS: 10-32, 3/4"		MS24693C274	-	1
-2	-1				

NUMBER OF ELEMENTS:	FREQ. BAND:	LNA:	CONNECTOR:	COLOR:
SIZE (INCHES):	1215: L1/L2 15: L1 ONLY	A: WITH LNA AL: WITH LNA/LIMITER B: WITHOUT LNA	S: SMA: P: PINS M: MCX: MM: MMCX N, NB: N, N Bulkhead T, TB: TNC, TNC-Bulkhead	-1: GLOSS WHITE #17925 PER FED-STD-595B -2: LUSTERLESS GRAY #36320 PER FED-STD-595B -3: CAMO GREEN #34094 PER FED-STD-595B -4: LUSTERLESS BLACK #37038 PER FED-STD-595B -5: DESERT TAN #33446 PER FED-STD-595B

UNLESS OTHERWISE SPECIFIED DIMENSIONS ARE IN INCHES		ANTCOM CORP. TORRANCE, CALIFORNIA	
FRACTIONS	DECIMALS	ORIGINAL DRAWN	S. HUYNH Dec-18-13
± 1/64	.0005 ± .1"	ORIGINALLY DESIGNED	S. HUYNH Dec-18-13
TOLERANCE 5V/ PER ANG Y14.5		UPDATED	S. HUYNH July-07-16
REMOVE ALL BURRS		UPDATE DRAWN	P. TRAN July-07-16
BREAK EXTERNAL EDGES .005 TO .015		APPROVED	S. HUYNH July-07-16
SMILEY'S SURFACE FINISH PER MIL-S-8878			
313'S ON A COINER & 27.005			
WASHED SURFACES 129			
DO NOT SCALE DRAWING			