



(240-270)/(290-310) MHz UHF Satcom Antenna

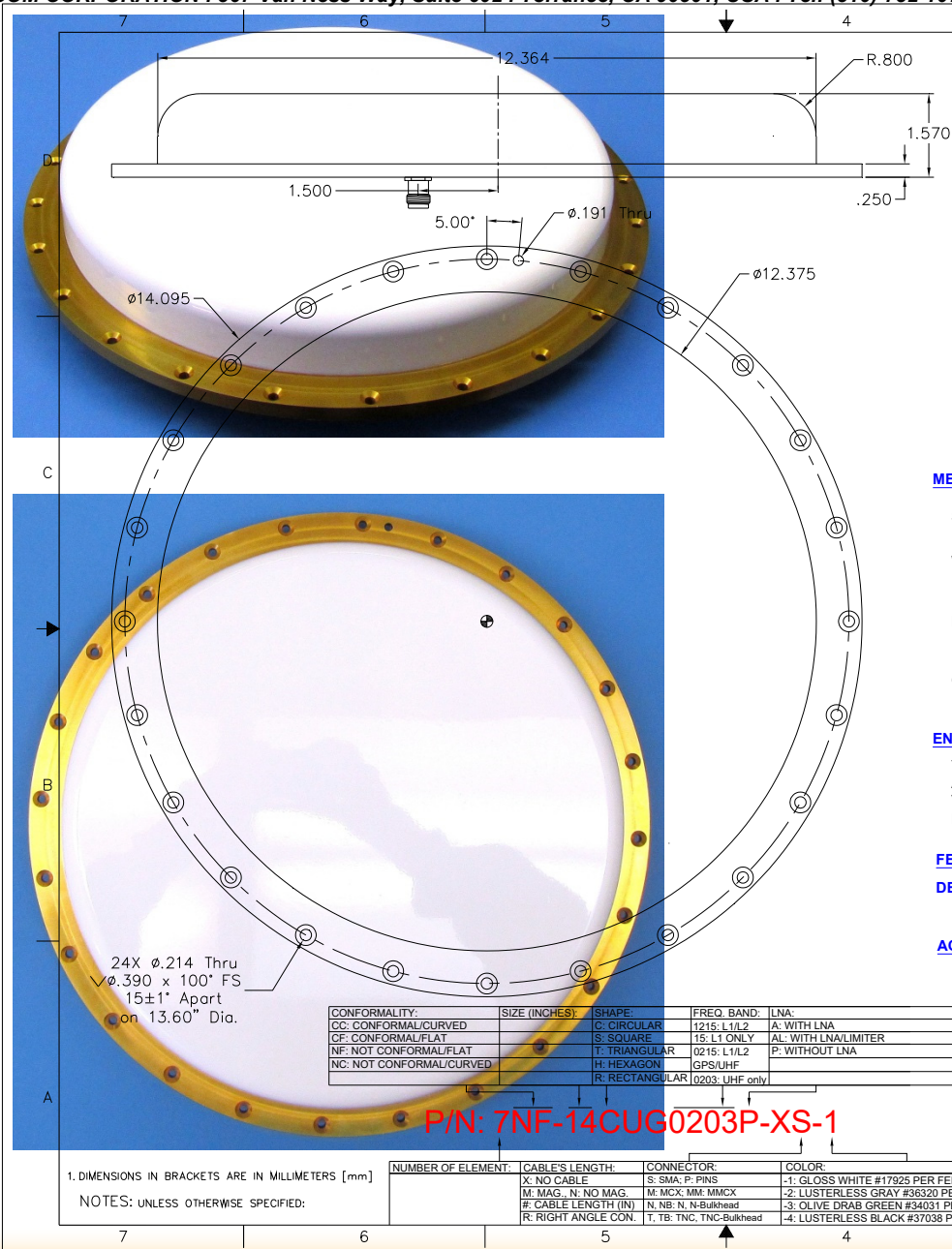
P/N: 7NF-14CUG0203P-XS-1

(14" Dia. X 1.57" Thick), Flat Top Mount GAS1 Foot Print Configuration



ISO 9001:2008/FAA Approved Facility **Antenna Mounts/Adapters:** <http://www.antcom.com/documents/catalogs/PeripheralAntennaProducts2.pdf>

ANTCOM CORPORATION . 367 Van Ness Way, Suite 602 . Torrance, CA 90501, USA . Tel: (310) 782-1076 . Fax: (310) 782-1086 . E-mail: antennas@antcom.com . <http://www.antcom.com>



SPECIFICATIONS

ELECTRICAL:

REVISIONS		DATE	REVISED	APPROVED	
ZONE	REV	DESCRIPTION	FROM LEFT TO RIGHT	P.T	S.H
A		CONNECTOR LOCATION	Aug-18-12		

GPS OPTION		UHF			
FREQUENCY:	L1: (1575.42 ±12) MHz	L2: (1227.60 ±12) MHz	Rx:(243-270) MHz Tx:(290-318) MHz		
RADIATION PATTERN:	HEMISPHERICAL				
POLARIZATION:	RHCP	RHCP	RHCP		
VSWR:	< 1.5:1	< 1.5:1	< 2.0:1		
IMPEDANCE:	50 ohms				
ELEMENT GAIN (dBic):	Free Space	4 ft G.P.	Free Space	4 ft G.P.	4 ft G.P.
@ 90° (ZENITH):	+ 5.4	+ 2.4	+ 4.1	+ 5.6	+ 3.0
@ 10° Elevation:	- 1.6	- 1.7	- 3.2	- 2.8	
@ 20° Elevation:	0.0	+ 0.9	- 1.6	+ 0.5	
@ 30° Elevation:	+ 1.3	+ 2.0	- 0.3	+ 2.4	
@ 60 - 90° Elevation:	> 4.2	> 2.5	> 2.7	> 3.6	
BEAM WIDTH (3dB):	102 Deg.	145 Deg.	93 Deg.	80 Deg.	
AXIAL RATIO:	2 dB		2 dB		
NULL DEPTH:	> 55-60 dB				
LIGHTNING PRO.:	DC GROUNDING				
POWER HANDLING:	200 Watt CW				

MECHANICAL:

SIZE:	DIAMETER: 14.095"
	HEIGHT: 1.57 in
WEIGHT:	19 Lbs. (8.6Kg)
FINISH:	SKYDROL RESISTANT POLYURETHANE ENAMEL BASE IRIDITE PER MIL-C-5441
MATERIAL:	6061-T6 ALUMINUM ALLOY BASE COMPOSITE RADOME, IMPACT, ABRASION, UV, SOLVENT, SKYDROL RESISTANCE, AND FIRE RETARDANT
CONNECTOR:	SMA FEMALE (OPTION: TNC, N)

ENVIRONMENTAL:

TEMPERATURE:	-67 °F TO +185 °F [-55 °C TO +85 °C]
ALTITUDE:	70,000 ft.
VIBRATION:	> 30 G's
LEAKAGE:	HERMETICALLY SEAL

FEDERAL & MILITARY SPECIFICATIONS:

DESIGN TO:	FAA TSO-C144, DO-160D, D0-228, MIL-C-5541, MIL-E-5400, MIL-I-45208A, MIL-STD-810, AND SAE J1455
------------	--

ACCEPTANCE TEST PROCEDURE:

ATP-GPS-L1L2-100

CONFORMALITY:	SIZE (INCHES)	SHAPE:	FREQ. BAND:	LNA:
CC: CONFORMAL/CURVED		C: CIRCULAR	1215-1112	A: WITH LNA
CF: CONFORMAL/FLAT		S: SQUARE	15: L1 ONLY	AL: WITH LNA/LIMITER
NF: NOT CONFORMAL/FLAT		T: TRIANGULAR	0215: L1/L2	P: WITHOUT LNA
NC: NOT CONFORMAL/CURVED		H: HEXAGON	GPS/UHF	
		R: RECTANGULAR	0203: UHF only	

P/N: 7NF-14CUG0203P-XS-1

1. DIMENSIONS IN BRACKETS ARE IN MILLIMETERS [mm]
NOTES: UNLESS OTHERWISE SPECIFIED:

NUMBER OF ELEMENT:	CABLE'S LENGTH:	CONNECTOR:	COLOR:
	K: NO CABLE	S: SMA: P: PINS	-1: GLOSS WHITE #17925 PER FED-STD-595B
	M: MAG. N: NO MAG.	M: MCK: MM: MMCX	-2: LUSTERLESS GRAY #34031 PER FED-STD-595B
	#: CABLE LENGTH (IN)	N: NB: N: N-Bulkhead	-3: OLIVE DRAB GREEN #34031 PER FED-STD-595B
	R: RIGHT ANGLE CON.	T: TB: TNC: TNC-Bulkhead	-4: LUSTERLESS BLACK #37038 PER FED-STD-595B

UNLESS OTHERWISE SPECIFIED DIMENSIONS ARE IN INCHES FRACTIONS DECIMALS ANGLES ± 1/64 ± .005 ± 1°	ORIGINAL DRAWN S. HUYNH Mar-05-07
TOLERANCE SHW PER ANSI Y14.5 REMOVE ALL BURRS BREAK EXTERNAL EDGES .005 TO .015 FILED TO .005 TO .010 DIA'S ON A COMMON & .000879 MACHINED SURFACES	ORIGINAL DESIGNED S. HUYNH Mar-05-07
DO NOT SCALE DRAWING	UPDATED DESIGN S. HUYNH July-20-12
	APPROVED P. TRAN July-20-12
	CAD FILE NO

ANTCOM CORP. TORRANCE, CALIFORNIA	
UHF SATCOM GAS1 FOOT PRINT ANTENNA	
REV: 002	DATE: 07-20-12
D 3CVE1	7NF-14CUG0203P-XS-1
SCALE: 1/1	SHEET 1 OF 1

NMO Connector Option is Now Available for Some Antennas