



FAA Approved Facility

5-Element-5-Channel (5 RHCP) CRPA L1/L2 GPS/Glonass Antenna Array

P/N: 5NF-4.7CG1215P-XS-4 Rev C

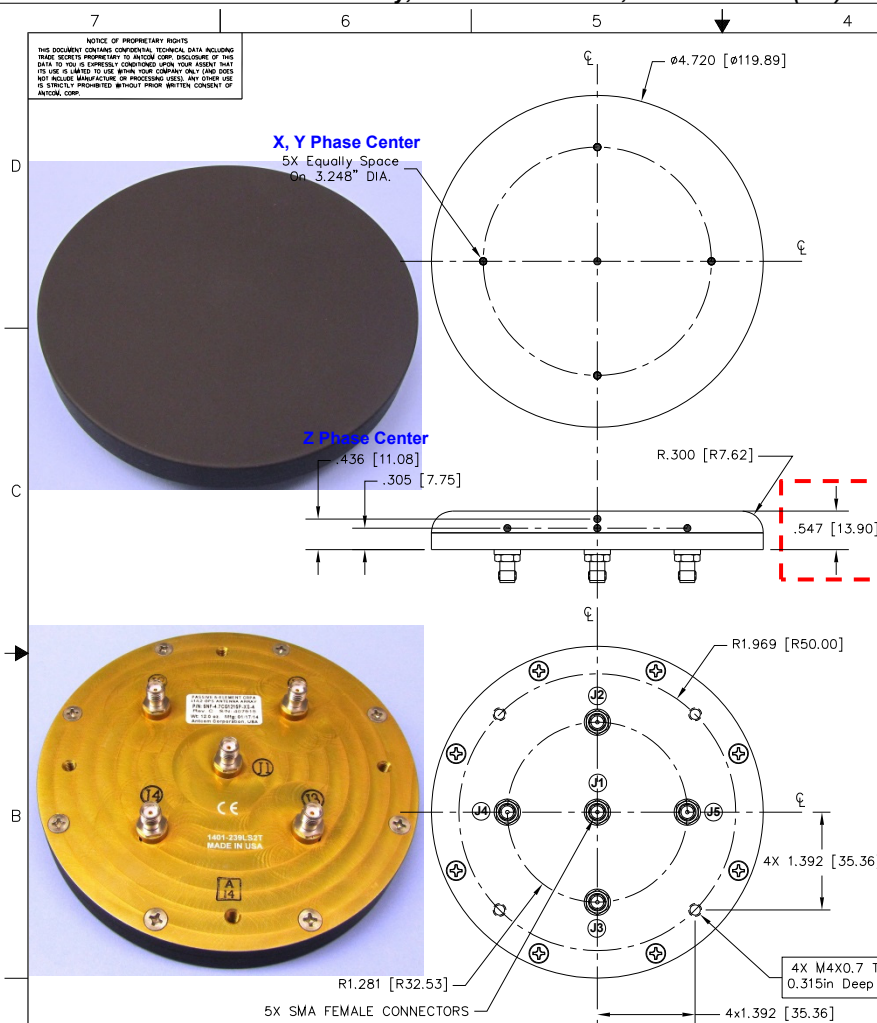
(Improved Gain) (4.72" Dia. x 0.547" (13.9mm) Thick)

"-PL-" or "-AL-" for Limiter Options for High Power Pulse Protection



ANTCOM CORPORATION . 367 Van Ness Way, Suite 602 . Torrance, CA 90501 . Tel: (310) 782-1076 . Fax: (310) 782-1086 . E-mail: antennas@antcom.com . http://www.antcom.com

Wide Band GNSS Option Is Available



SPECIFICATIONS

ELECTRICAL:

ZONE	REV	REVISIONS		
		DESCRIPTION	DATE	APPROVED
A		IMPROVED GAIN	Sep-21-06	S.H
B		REVISED HEIGHT PER RAYTHEON SPECS	Jan-08-13	S.H
C		REDUCED TOTAL HEIGHT TO 13.9MM	Dec-19-13	S.H

FREQUENCY:	L1: (1575.42 ± 12) MHz		L2: (1227.60 ± 12) MHz		
	RADIATION PATTERN: HEMISPHERICAL				
POLARIZATION:	RHCP	RHCP	RHCP	RHCP	
VSWR:	< 1.5:1	< 2.0:1	< 1.5:1	< 2.0:1	
IMPEDANCE:	50 ohms		50 ohms		
FRPA ELEMENT GAIN (dBic):	Reference	Auxiliary	Reference	Auxiliary	
	4 ft G.P.	4 ft G.P.	4 ft G.P.	4 ft G.P.	
@ 90 ° (ZENITH):	+ 3.5	+ 3.8	+ 4.9	+ 2.7	Amplitude/Phase
@ 10 ° Elevation:	- 2.0	- 4.3	- 3.6	- 6.3	Phase
@ 20 ° Elevation:	+ 0.8	- 2.2	- 0.1	- 4.2	Data are Available
@ 30 ° Elevation:	+ 1.8	- 0.7	- 1.8	- 2.4	Data are Available
@ 60 - 90 ° Elevation:	> 2.8	> 2.5	> 3.0	> 1.3	Data are Available
BEAM WIDTH (3dB):	139 Deg.	120 Deg.	75 Deg.	90 Deg.	Format
LIGHTNING PROTECTION:	DC GROUNDING				

MECHANICAL:

SIZE: HEIGHT: 0.547in. [13.90 mm]
DIAMETER: 4.72 in [119.89 mm]

WEIGHT: 12.9 oz (366 g)

FINISH: SKYDROL RESISTANT POLYURETHANE ENAMEL
BASE IRIDITE PER MIL-C-5541F TYPE I CLASS IA

MATERIAL: 6061-T6 ALUMINUM ALLOY BASE
COMPOSITE RADOME, IMPACT, ABRASION, UV, SOLVENT, SKYDROL RESISTANCE, AND FIRE RETARDANT

CONNECTOR: SMA FEMALE

ENVIRONMENTAL:

TEMPERATURE: -71 °F TO +203 °F [-57 °C TO +95 °C]
ALTITUDE: 70,000 ft
VIBRATION: 40 G's
LEAKAGE: HERMETICALLY SEAL

FEDERAL & MILITARY SPECIFICATIONS:

DESIGN TO: FAA TSO-C144, DO-160D, DO-228, MIL-C-5541, MIL-STD-81F, MIL-E-5400, MIL-I-45208A, MIL-STD-810, AND SAE J1455

ACCEPTANCE TEST PROCEDURE:

ATP-GPS-L1L2-100

CONFORMALITY:	SIZE (INCHES):	SHAPE:	FREQ. BAND:	LNA:
CC: CONFORMAL/CURVED	C: CIRCULAR	1215: L1/L2	A: ACTIVE (with LNA), AL: ACTIVE With LIMITER	
CF: CONFORMAL/FLAT	S: SQUARE	15: L1 ONLY	P: PASSIVE (without LNA)	
NF: NOT CONFORMAL/FLAT	T: TRIANGULAR		P2: PASSIVE with DUAL RHCP/LHCP POLARIZATION	
NC: NOT CONFORMAL/CURVED	H: HEXAGON		P2L: PASSIVE with DUAL LINEAR POLARIZATION and with 1 RHCP for MORE THAN 1 ELEMENT ARRAY	
	R: RECTANGULAR			

P/N: 5NF-4.7CG1215P-XS-4

1. DIMENSIONS IN BRACKETS ARE IN MILLIMETERS [mm]

NOTES: UNLESS OTHERWISE SPECIFIED:

NUMBER OF ELEMENT:	CABLE LENGTH:	CONNECTOR:	COLOR:
X: NO CABLE	S: SMA, P: PINS	-1: GLOSS WHITE #17925 PER FED-STD-595B	
M: MAG., N: NO MAG.	M: MCK; MM: MMCK	-2: LUSTERLESS GRAY #36320 PER FED-STD-595B	
#: CABLE LENGTH (IN)	N: NB; N: N-bulkhead	-3: OLIVE DRAB GREEN #34031 PER FED-STD-595B	
R: RIGHT ANGLE CON.	T: TB; TNC; TNC-Bulkhead	-4: LUSTERLESS BLACK #37038 PER FED-STD-595B	

QUANTITY REQD	DESCRIPTION	PARTS LIST	PART NO	ITEM NO
5	MOUNTING SCREWS: 10-32, 3/4"		MS24693C274	1

UNLESS OTHERWISE SPECIFIED DIMENSIONS ARE IN INCHES FRACTIONS DECIMALS ANGLES	ORIGINALLY DRAWN	S. HUYNH	Jan-24-11
± 1/64 .xxxx .007	ORIGINALLY DESIGNED	S. HUYNH	Jan-24-11
TOLERANCE S/W PER ANSI Y14.5	UPDATED	S. HUYNH	Aug-23-13
REMOVE ALL BURRS BREAK ALL SHARP EDGES .005 TO .015 SIZE IN PARTS PER MIL-S-8879 DITS ON A COMMON & .07 .005 MACHINED SURFACES	APPROVED	P. TRAN	Aug-23-13
DO NOT SCALE DRAWING		S. HUYNH	Aug-23-13

ANTCOM CORP.		TORRANCE CALIFORNIA
4.72in Dia. 5-ELEMENT 5 CHANNEL L1L2 GPS CRPA ANTENNA ARRAY (5 RHCP)		
DATE	CODE	REVISION
D 13CVE1		5NF-4.7CG1215P-XS-4
SCALE	1/1	SHEET 1 OF 1

Antenna Mounts: http://www.antcom.com/documents/catalogs/PeripheralAntennaProducts2.pdf
Amplifiers/Power Divider/Combiner/Filters: http://www.antcom.com/documents/catalogs/PeripheralAntennaProducts1.pdf