



FAA Approved Facility

New 4.5in Dia. 5 Element CRPA L1L2 GPS Antenna Array
 P/N: 5NF-4.5CG1215P-16S-4 (without FRPA Mounting Adapter)
 P/N: 5NF-4.5CG1215P-16S-4-B3 (with Standard Flat FRPA Mounting Adapter)
 P/N: 5NF-4.5CG1215P-16S-4-B3R (with 4in Radius FRPA Mounting Adapter)

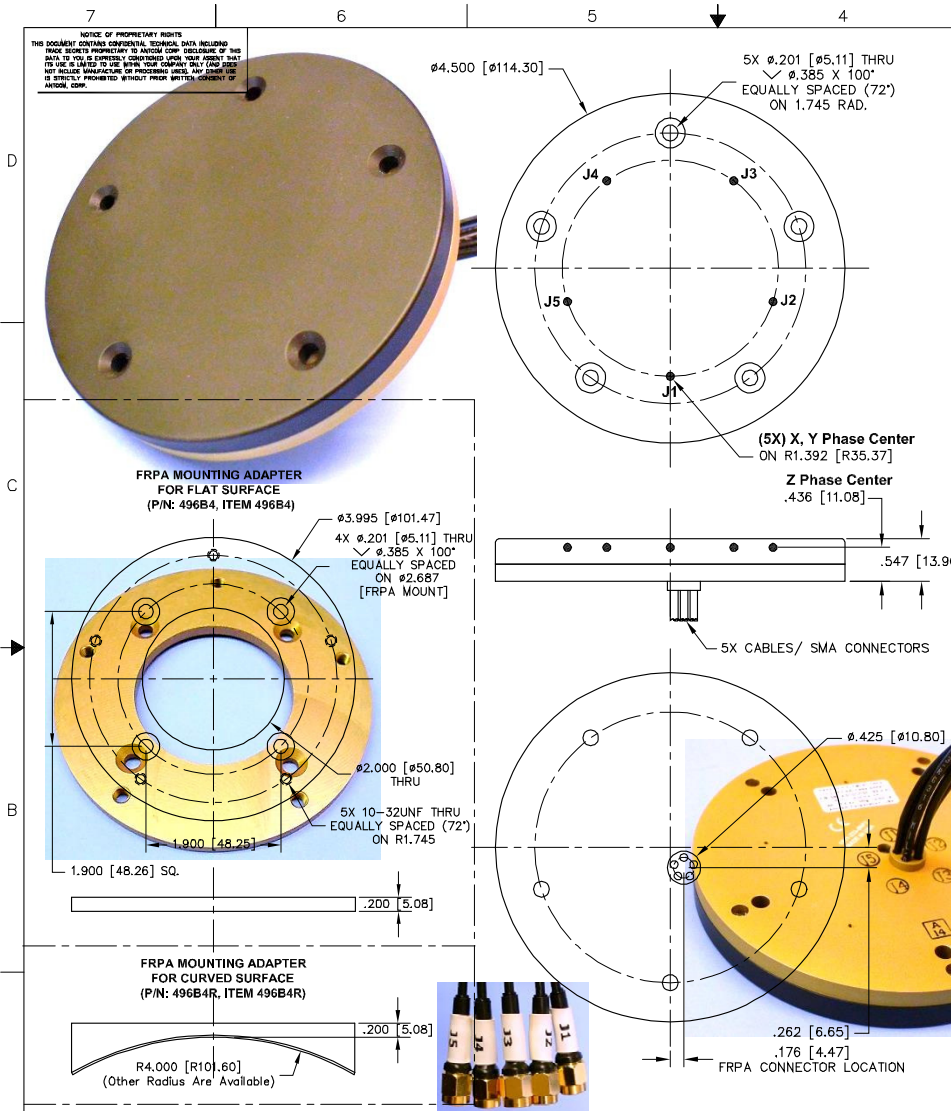
Arinc 743, Other Mounting Hole Patterns, Cables, Connectors and Output Locations can be Customized

“-PL-” or “-AL-” for Limiter Options for High Power Pulse Protection



ANTCOM CORPORATION . 367 Van Ness Way, Suite 602 . Torrance, CA 90501 . Tel: (310) 782-1076 . Fax: (310) 782-1086 . E-mail: antennas@antcom.com . http://www.antcom.com

Wide Band GNSS Option Is Available



SPECIFICATIONS		REVISIONS		
ZONE	REV	DESCRIPTION	DATE	APPROVED
-	-	-	-	-

ELECTRICAL:	
FREQUENCY +/- 1dB BW:	L1: (1575.42 ± 15) MHz L2: (1227.60 ± 15) MHz
RADIATION PATTERN:	HEMISPHERICAL
POLARIZATION:	RHCP RHCP
VSWR:	< 2.0:1 < 2.0:1
IMPEDANCE:	50 ohms 50 ohms
ELEMENT ANTENNA GAIN (dBic):	3 In G.P. In ARRAY 3 In G.P. In ARRAY
@ 90 ° (ZENITH):	+ 3.8 Amplitude/ + 2.7 Amplitude/
@ 10 ° Elevation:	- 4.3 Phase - 6.3 Phase
@ 20 ° Elevation:	- 2.2 Data are - 4.2 Data are
@ 30 ° Elevation:	- 0.7 Available - 2.4 Available
@ 60 - 90 ° Elevation:	> 2.5 in ASCII > 1.3 in ASCII
BEAM WIDTH (3dB):	120 Deg. Format 90 Deg. Format
HIGH POWER PROTECTION	OPTIONAL: WITH LIMITER SIMILAR TO THAT OF PAVEWAY-002

LNA OPTION:	
LNA GAIN:	(22.0+/-2.0) dB
LNA NOISE FIGURE:	1.8 dB
LNA P 1dB Out:	+16 dBm
VOLTAGE/CURRENT:	(+2.5 TO +5) Volts DC / (15 TO 25) mA

MECHANICAL:	
SIZE:	DIAMETER 4.5 in. [101.47 mm] HEIGHT 0.547 in. [13.90 mm]
WEIGHT:	6.30 oz. (.179 Kg)
FINISH:	SKYDROL RESISTANT POLYURETHANE ENAMEL BASE IRIDITE PER MIL-C-5441F
MATERIAL:	6061-T6 ALUMINUM ALLOY BASE COMPOSITE RADOME, IMPACT, ABRASION, UV, SOLVENT, SKYDROL RESISTANCE, AND FIRE RETARDANT
CONNECTOR:	5X CABLES/ SMA (OPTION: MCX, MMCX)

ENVIRONMENTAL:	
TEMPERATURE:	-67 °F TO +185 °F [-55 °C TO +85 °C]
ALTITUDE:	70,000 ft.
VIBRATION:	> 30 G's
LEAKAGE:	HERMETICALLY SEAL

FEDERAL & MILITARY SPECIFICATIONS:	
DESIGN TO:	FAA TSO-C144, DO-160D, D0-228, MIL-C-5541, MIL-E-5400, MIL-4-45208A, MIL-STD-810, AND SAE J1455
ACCEPTANCE TEST PROCEDURE:	ATP-GPS-L1L2-100

QTY	DESCRIPTION	PART NO	REV
1	FLAT FRPA MOUNTING ADAPTER	496B4, Item 496B4	3
1	4" RAD. FRPA MOUNTING ADAPTER (OPTIONAL)	496B4R, Item 496B4R	2
9	MOUNTING SCREWS, 10-32, 7/8" L	93085A832, Item 578-7/8	1

P/N: 5NF-4.5CG1215P-XS-4-B3

1. DIMENSIONS IN BRACKETS ARE IN MILLIMETERS [mm]	UNLESS OTHERWISE SPECIFIED: DIMENSIONS ARE IN INCHES FRACTIONS DECIMALS ANGLES ± 1/64 .005 .005 ± 1°
NOTES: UNLESS OTHERWISE SPECIFIED: G3: L1L2 GPS/CLONASS/CM/NSTAR	UNLESS OTHERWISE SPECIFIED: TOLERANCE 5% PER ANSI Y14.5
FREQ. BAND: 1215; L1/L2	1: GLOSS WHITE #17925 PER FED-STD-595B
1S: L1 ONLY	2: LUSTERLESS GRAY #36320 PER FED-STD-595B
G3: L1L2 GPS/CLONASS/CM/NSTAR	3: OLIVE DRAB GREEN #34031 PER FED-STD-595B
A: WITH LNA	4: LUSTERLESS BLACK #37038 PER FED-STD-595B
AL: WITH LNA/LIMITER	5: TAN #33446 PER FED-STD-595B
P: WITHOUT LNA	
S: SMA	
M: MCX; MM: MMCX	
X: NO CABLE	

ANTCOM CORP. TORRANCE, CALIFORNIA	
5 ELEMENT CRPA L1L2 GPS ANTENNA ARRAY	
DATE: 05/20/16	DRAWING NO: 3CVE1
SCALE: 1/1	SHEET 1 OF 1

Antenna Mounts: <http://www.antcom.com/documents/catalogs/PeripheralAntennaProducts2.pdf>
 Amplifiers/Power Divider/Combiner/Filters: <http://www.antcom.com/documents/catalogs/PeripheralAntennaProducts1.pdf>