



FAA Approved Facility

# 5-Element CRPA L1/L2 GPS Antenna Array (14.09" Dia. x 0.815" High), 1/2 Lambda Spacing, GAS1 Foot Print

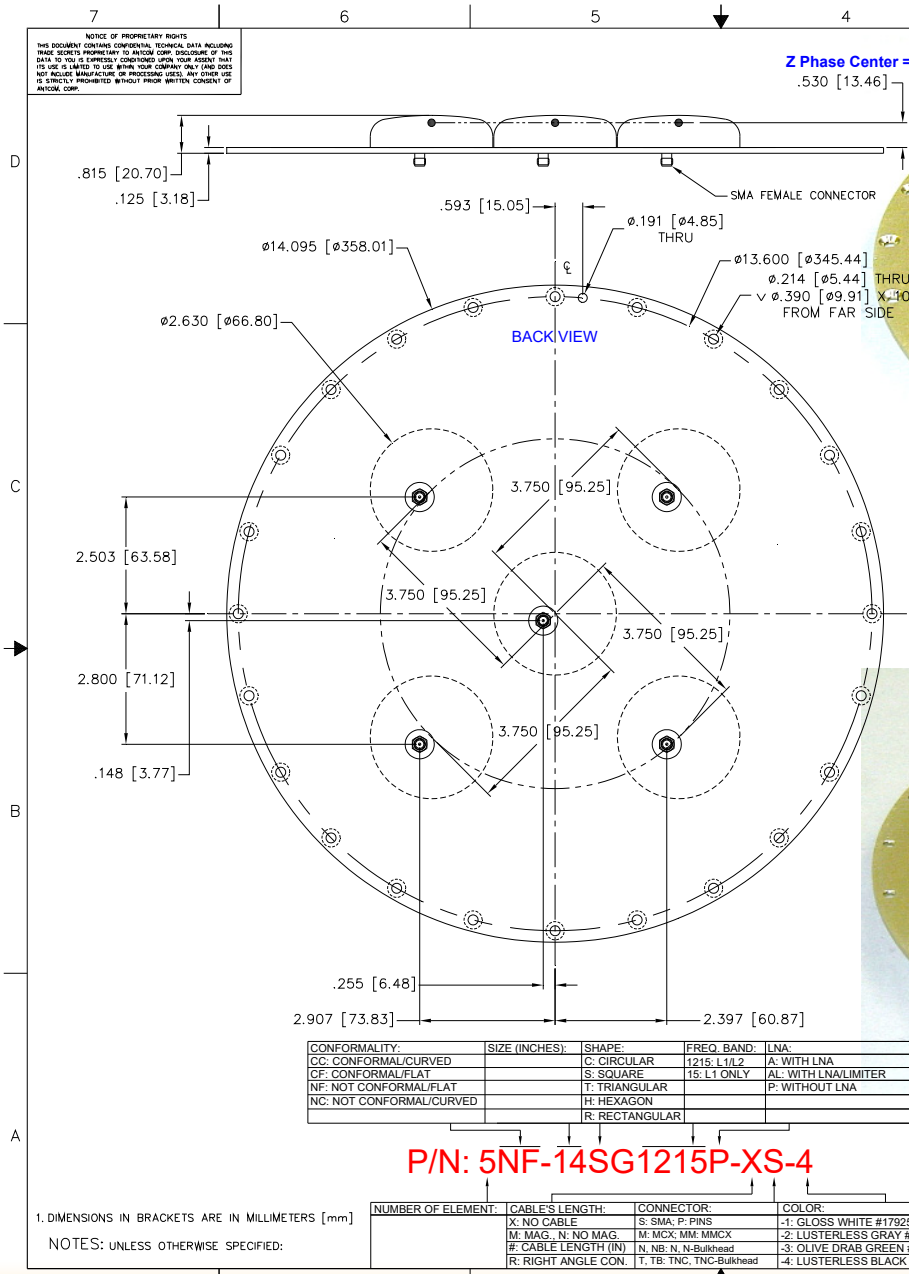
P/N: 5NF-14SG1215P-XS-X (Square Arrangement)

"-PL-" or "-AL-" for Limiter Options for High Power Pulse Protection



ANTCOM CORPORATION . 367 Van Ness Way, Suite 602 . Torrance, CA 90501 . Tel: (310) 782-1076 . Fax: (310) 782-1086 . E-mail: antennas@antcom.com . http://www.antcom.com

Wide Band GNSS Option Is Available



### SPECIFICATIONS

		REVISIONS		
ZONE	REV	DESCRIPTION	DATE	APPROVED
<b>ELECTRICAL:</b> FREQUENCY: L1: (1575.42 ±12) MHz L2: (1227.60 ±12) MHz RADIATION PATTERN: HEMISPHERICAL POLARIZATION: RHCP VSWR: < 1.5:1 IMPEDANCE: 50 ohms ANTENNA ELEMENT GAIN (dBi): Free Space 4 ft G.P. Free Space 4 ft G.P. @ 90° (ZENITH): + 5.4 + 2.4 + 4.1 + 5.6 @ 10° Elevation: - 1.6 - 1.7 - 3.2 - 2.8 @ 20° Elevation: 0.0 + 0.9 - 1.6 + 0.5 @ 30° Elevation: + 1.3 + 2.0 - 0.3 + 2.4 @ 60 - 90° Elevation: > 4.2 > 2.5 > 2.7 > 3.6 BEAM WIDTH (3dB): 102 Deg. 145 Deg. 93 Deg. 80 Deg. AXIAL RATIO: 2 dB NULL DEPTH: > 55-60 dB LIGHTNING PROTECTION: DC GROUNDING POWER HANDLING: 200 Watt CW				
<b>MECHANICAL:</b> SIZE: DIAMETER: 14.00" HEIGHT: 0.815 in (20.70 mm) WEIGHT: 3.1 lbs (1.4Kg) FINISH: SKYDROL RESISTANT POLYURETHANE ENAMEL BASE IRIDITE PER MIL-C-5441 MATERIAL: 6061-T6 ALUMINUM ALLOY BASE COMPOSITE RADOME, IMPACT, ABRASION, UV, SOLVENT, SKYDROL RESISTANCE, AND FIRE RETARDANT CONNECTOR: SMA FEMALE (OPTION: TNC, TNC Bulkhead, N, N Bulkhead, MCX, MMCX, or Cable)				
<b>ENVIRONMENTAL:</b> TEMPERATURE: -67 °F TO +185 °F [-55 °C TO +85 °C] ALTITUDE: 70,000 ft. VIBRATION: > 30 G's LEAKAGE: HERMETICALLY SEAL				
<b>FEDERAL &amp; MILITARY SPECIFICATIONS:</b> DESIGN TO: FAA TSO-C144, DO-160D, DO-228, MIL-C-5541, MIL-E-5400, MIL-E-45208A, MIL-STD-883C, AND SAE J1455 ACCEPTANCE TEST PROCEDURE: ATP-GPS-L1L2-100				

CONFORMALITY:	SIZE (INCHES):	SHAPE:	FREQ. BAND:	LNA:
CC: CONFORMAL/CURVED	S: SQUARE	C: CIRCULAR	1215: L1/L2	A: WITH LNA
CF: CONFORMAL/FLAT	NF: NOT CONFORMAL/FLAT	T: TRIANGULAR	15: L1 ONLY	AL: WITH LNA/LIMITER
NC: NOT CONFORMAL/CURVED	NR: NOT CONFORMAL/FLAT	H: HEXAGON		P: WITHOUT LNA
		R: RECTANGULAR		

**P/N: 5NF-14SG1215P-XS-4**

NUMBER OF ELEMENT:	CABLE LENGTH:	CONNECTOR:	COLOR:
X: NO CABLE	S: SMA: P: PINS	-1: GLOSS WHITE #17925 PER FED-STD-595B	
M: MAG. N: NO MAG.	M: MCX: MM: MMCX	-2: LUSTERLESS GRAY #36320 PER FED-STD-595B	
#: CABLE LENGTH (IN)	N: NB: N: N-Bulkhead	-3: OLIVE DRAB GREEN #34031 PER FED-STD-595B	
R: RIGHT ANGLE CON.	T: TNC: TNC: Bulkhead	-4: LUSTERLESS BLACK #37038 PER FED-STD-595B	

QUANTITY REQD	DESCRIPTION	PARTS LIST	PART NO	FILE NO
24	MOUNTING SCREWS: 10-32, 3/4"		MS24693C274	1

UNLESS OTHERWISE SPECIFIED DIMENSIONS ARE IN INCHES FRACTIONS DECIMALS ANGLES ± 1/64 ± .005 ± 1°	ORIGINALLY DRAWN S. HUYNH May-29-01	<b>ANTCOM CORP.</b> TORRANCE CALIFORNIA OUTLINE DRAWING: 5 ELEMENT L1L2 GPS CIRCULAR ANTENNA ARRAY
TOLERANCE ±.010 PER ANSI Y14.5 REMOVE ALL BURRS BREAK ALL EDGES .005 TO .015 FILL IN .002 TO .010 SIZE IN INCHES PER MIL-S-8879 DATE ON A COLUMN OF .25/.005 MACHINED SURFACES	ORIGINALLY DESIGNED S. HUYNH May-29-01	
DO NOT SCALE DRAWING	UPDATE DRAWN P. TRAN Aug-23-12	
	DESIGN UPDATE S. HUYNH Aug-23-12	
	APPROVED S. HUYNH Aug-23-12	DRAWING NO: 5NF-14SG1215P-XS-X SHEET 1 OF 1

Antenna Mounts: http://www.antcom.com/documents/catalogs/PeripheralAntennaProducts2.pdf  
Amplifiers/Power Divider/Combiner/Filters: http://www.antcom.com/documents/catalogs/PeripheralAntennaProducts1.pdf