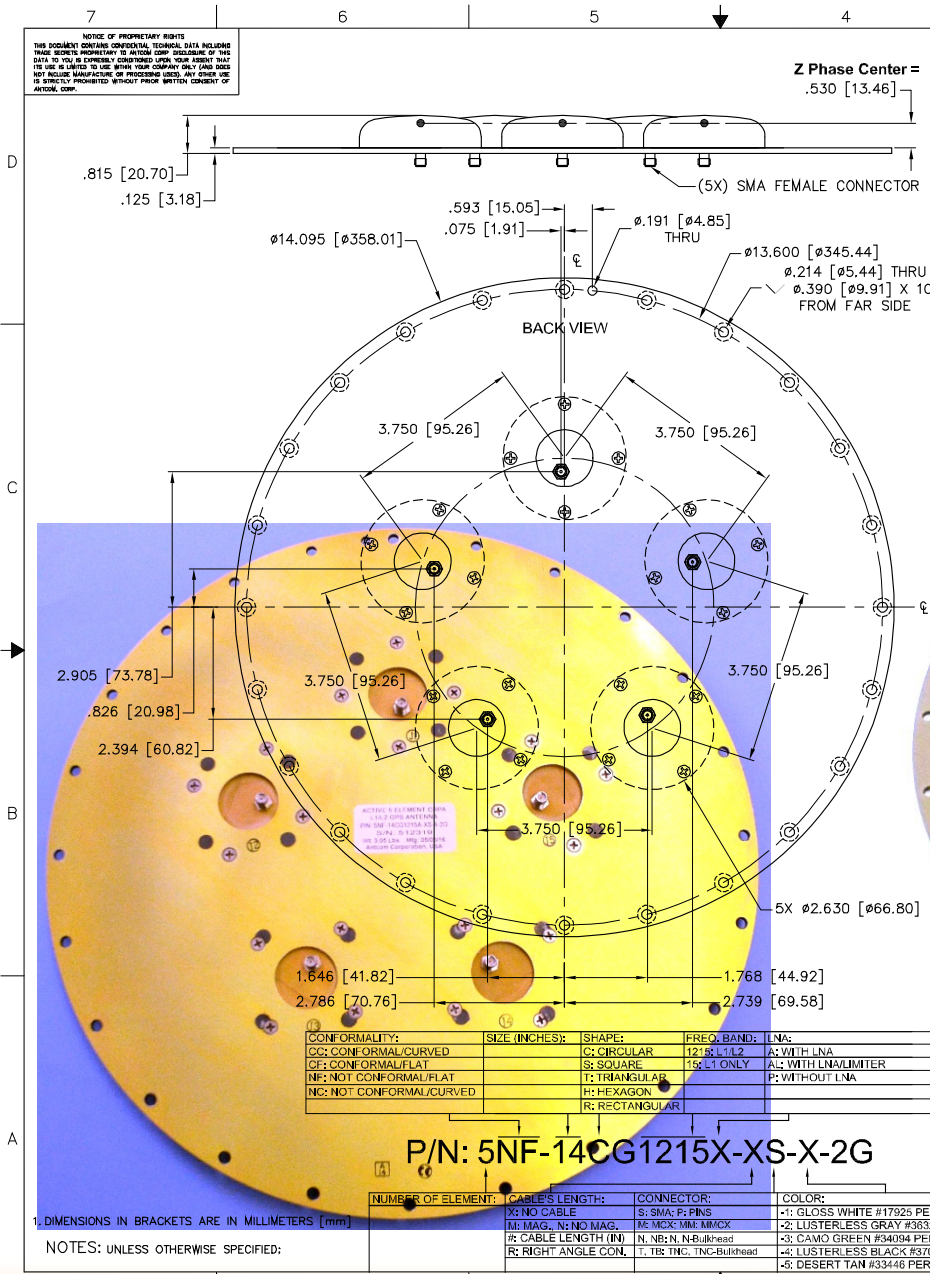


ANTCOM CORPORATION . 367 Van Ness Way, Suite 602 . Torrance, CA 90501 . Tel: (310) 782-1076 . Fax: (310) 782-1086 . E-mail: antennas@antcom.com . http://www.antcom.com

Wide Band GNSS Option Is Available



ELECTRICAL:

ZONE	REVISIONS			
	REV	DESCRIPTION	DATE	APPROVED
A		ANTENNA ORIENTATION	05/06/16	S.H.

FREQUENCY:	L1: (1575.42 ±12) MHz	L2: (1227.60 ±12) MHz		
RADIATION PATTERN:	HEMISPHERICAL			
POLARIZATION:	RHCP	RHCP		
VSWR:	< 1.5:1	< 1.5:1		
IMPEDANCE:	50 ohms	50 ohms		
ANTENNA ELEMENT GAIN (dBic):	Free Space	4 ft G.P.	Free Space	4 ft G.P.
@ 90° (ZENITH):	+ 5.4	+ 2.4	+ 4.1	+ 5.6
@ 10° Elevation:	- 1.6	- 1.7	- 3.2	- 2.8
@ 20° Elevation:	0.0	+ 0.9	- 1.6	+ 0.5
@ 30° Elevation:	+ 1.3	+ 2.0	- 0.3	+ 2.4
@ 80 - 90° Elevation:	> 4.2	> 2.5	> 2.7	> 3.6
BEAM WIDTH (3dB):	102 Deg.	145 Deg.	93 Deg.	80 Deg.
AXIAL RATIO:	2 dB		2 dB	
LIGHTNING PROTECTION:	DC GROUNDING			
REJECTION @ (-50/+50) MHz	-41 dB / -59 dB		-40 dB / -40 dB	
@ (-100/+100) MHz	< -65 dB		< -65 dB	

LNA (OPTION):

LNA GAIN:	33 dB	35 dB
LNA NOISE FIGURE:	3.0 dB	3.0 dB
LNA P1dB Out:	+13 dBm	+13 dBm
LNA DC POWER:	2.5V/20mA, 3V/29mA, 3.3V/35mA, (2.5-24)V/≤50mA	
POWER HANDLING:	1 Watt CW, Optional: 10 Watts 1 Microsec Pulse (-AL-)	

MECHANICAL:

SIZE: DIAMETER: 14.00"
 HEIGHT: 0.815 in (20.7 mm)

WEIGHT: 3.1 lbs (1.4 Kg)

FINISH: SKYDROL RESISTANT POLYURETHANE ENAMEL
 BASE IRIDITE PER MIL-C-5441

MATERIAL: 6061-T6 ALUMINUM ALLOY BASE
 COMPOSITE RADOME, IMPACT, ABRASION, UV, SOLVENT,
 SKYDROL RESISTANCE, AND FIRE RETARDANT

CONNECTOR: SMA FEMALE
 (OPTION: TNC, TNC Bulkhead, N, N Bulkhead,
 MCX, MMCX, or Cable)

ENVIRONMENTAL:

TEMPERATURE: -67 °F TO +185 °F [-55 °C TO +85 °C]
 ALTITUDE: 70,000 ft.
 VIBRATION: > 30 G's
 LEAKAGE: HERMETICALLY SEAL

FEDERAL & MILITARY SPECIFICATIONS:

DESIGN TO: FAA TSO-C144, DO-160D, D0-228, MIL-C-5541,
 MIL-E-5400, MIL-I-45208A, MIL-STD-810, AND SAE J1455

ACCEPTANCE TEST PROCEDURE: ATP-GPS-L1L2-100

QUANTITY REQD:	DESCRIPTION	PARTS LIST	PART NO	REV
24	MOUNTING SCREWS: 10-32, 3/4"		MS24693C274, ITEM 578	1

UNLESS OTHERWISE SPECIFIED DIMENSIONS ARE IN INCHES FRACTIONS DECIMALS ANGLES ± 1/64 ± .005 ± .1°

ORIGINALLY DESIGNED: S. HUYNH May-29-01

ORIGINALLY DESIGNED: S. HUYNH May-29-01

UPDATE DRAWN: F. TRAM Aug-13-12

DESIGN UPDTE: S. HUYNH Aug-13-12

APPROVED: S. HUYNH Aug-13-12

DO NOT SCALE DRAWING

ANTCOM CORP. TORRANCE CALIFORNIA

5 ELEMENT ACTIVE L1L2 GPS ANTENNA ARRAY

SCALE 1/1

SHEET 1 OF 1

Antenna Mounts: http://www.antcom.com/documents/catalogs/PeripheralAntennaProducts2.pdf
 Amplifiers/Power Divider/Combiner/Filters: http://www.antcom.com/documents/catalogs/PeripheralAntennaProducts1.pdf