

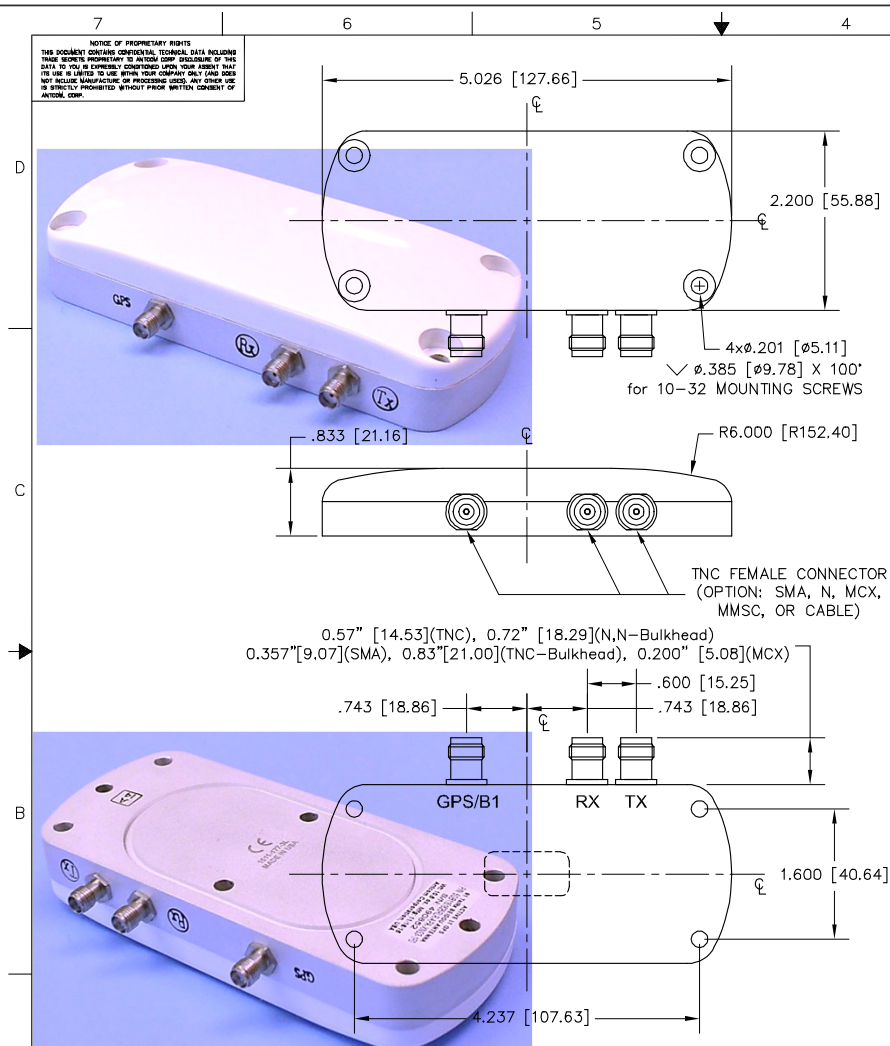


ISO 9001:2008/FAA Approved Facility

L1 GPS + Tx/Rx Beidou Antenna, P/N: 5G151625RLR-APA-XNT3-4F0
 L1 GPS / B1 + Tx/Rx Beidou Antenna, P/N: 5GB1151625RLR-APA-XNT3-4F0
 Other Frequencies, Connectors, and Colors are Available



ANTCOM CORPORATION . 367 Van Ness Way, Suite 602 . Torrance, CA 90501 . Tel: (310) 782-1076 . Fax: (310) 782-1086 . E-mail: antennas@antcom.com . http://www.antcom.com



CONFIGURATION:	FREQ. BAND:	LNA:	CABLE'S LENGTH:	TX/RX/GPS CONNECTOR:	COLOR:
1: 2" SO, (FLAT)	1625: Tx/Rx	A: WITH LNA	X: NO CABLE	S: SMA; P: PINS	-1: GLOSS WHITE #17925 PER FED-STD-595B
1.5: 1.8" SO, (FLAT)	25: Rx ONLY	P: WITHOUT LNA	NA WITH MAG. MOUNT	NR: MCX; MM: MMCX	-2: LUSTERLESS GRAY #38320 PER FED-STD-595B
2: 2.8" DIA. (FLAT)	16: Tx ONLY		#: CABLE LENGTH (IN)	N: N; NB: N-Bulkhead	-3: CAMO GREEN #34094 PER FED-STD-595B
3: 3.5" DIA. (FLAT)	151625: L1 GPS/Tx/Rx		R: RIGHT ANGLE CON.	T: TNC; TB: TNC-Bulkhead	-4: LUSTERLESS BLACK #37038 PER FED-STD-595B
4: MINI ARINC (FLAT)	12151625: L1/L2 GPS/Tx/Rx				-5: DESERT TAN #33446 PER FED-STD-595B
53: (HELIX ROD)					
5B: (HELIX BLADE)					
3D: (HELIX HANDHELD)					

P/N: 5G151625RLR-APA-XNT3-4F0

SPECIFICATIONS	REVISIONS					
	ZONE	REV	DESCRIPTION	DATE	APPROVED	
ELECTRICAL:						
FREQUENCY:	TX (1610 - 1625) MHz		RX (2484 - 2499) MHz		L1 GPS / B1 (1575.42 / 1561) MHz	
RADIATION PATTERN:	HEMISPHERICAL					
POLARIZATION:	LHCP		RHCP		RHCP	
VSWR:	2:1		2:1		2:1	
GAIN (dB):	F.S	4 ft G.P.	F.S	4 ft G.P.	F.S	4 ft G.P.
@ 90° (Zenith):	+4.9	+4.2	+3.7	+1.8	+4.6	+2.9
@ 10° Elevation (Ave):	-2.4	-1.3	-3.2	-1.8	-2.5	-1.8
@ 20° Elevation (Ave):	-0.8	+1.4	-1.6	+0.9	-1.1	+0.7
@ 30° Elevation (Ave):	+0.8	+2.3	-0.2	+0.2	+0.5	+1.7
@ 45° Elevation (Ave):	+2.8	+2.2	+1.3	+0.6	> 3.6	> 2.1
@ 70° Elevation (Ave):	+4.6	+3.5	+3.2	+0.6	> 3.6	> 2.1
AXIAL RATIO @ Zenith:	2 dB		2 dB		2 dB	
POWER HANDLING:	>5 W		1 Watt		1 Watt	
DC GROUNDING:	YES (LIGHTNING PROTECTION)					
FILTER (REJ. @1616 MHz):	57 dB					
REJECTION @ (-50/+50) MHz	-45 dB / -70 dB					
@ (-100/+100) MHz	< -65 dB					
LNA GAIN:	N/A		(35 +/- 1) dB		34 dB (P1dBout = +13 dBm)	
LNA NOISE FIGURE:	N/A		2.8 dB		2.4 dB	
LNA VOLTAGE:	N/A		(+2.5 to +30) Volts DC FROM Rx RF CON.		2.5V/20mA, 3V/20mA, 3.3V/20mA, (2.5-24)V/<30mA	
LNA DRAWING CURRENT:	N/A		< 38 mA			

MECHANICAL:

SIZE: WIDTH: 2.20 In. [55.88 mm], LENGTH: 5.026 In [127.66 mm]
 HEIGHT: 0.833 in. [21.16 mm]

WEIGHT: 8.0 oz. (226 g)

FINISH: SKYDROL RESISTANT POLYURETHANE ENAMEL
 BASE IRIDITE PER MIL-C-5441F

MATERIAL: 6061-T6 ALUMINUM ALLOY BASE
 COMPOSITE RADOME, IMPACT, ABRASION,
 UV, SOLVENT AND SKYDROL RESISTANCE,
 FIRE RETARDANT

CONNECTOR: TNC FEMALE
 (OPTION: SMA, TNC Bulkhead, N, MCX, MMCX, or Cable)

ENVIRONMENTAL:

TEMPERATURE: -67 °F TO +185 °F [-55 °C TO +85 °C]

ALTITUDE: 70,000 ft.

VIBRATION: > 30 G's

LEAKAGE: HERMETICALLY SEALED

FEDERAL & MILITARY SPECIFICATIONS:

DESIGN TO: FAA TSO-C144, DO-160D, D0-228, MIL-C-5541,
 MIL-E-5400, MIL-I-45208A, MIL-STD-810, AND SAE J1455

4	MOUNTING SCREW: (10-32, 1")	MS24893C276	-	-	3
1	ADHESIVE GASKET	123450-3M-4G	-	-	2
-2	-1	DESCRIPTION	PART NO	MATERIAL	FINISH
QUANTITY REQD			PARTS LIST		

UNLESS OTHERWISE SPECIFIED DIMENSIONS ARE IN INCHES FRACTIONS DECIMALS ANGLES TOLERANCES DECIMAL ANGLES ± 1/64 .005 .015 ± 1°

REMOVE ALL BURRS DEBURR ALL EDGES .005 TO .015 RADIUS R .005 SQUARE CORNERS PER MIL-C-8879 DIA'S ON A COLUMN ± .005 MACHINED SURFACES 12.5

DO NOT SCALE DRAWING

ANTCOM CORP. TORRANCE CALIFORNIA
 FLAT FIXED MOUNT BEIDOU/L1 GPS ANTENNA

DESIGNED BY: S. HUYNH DEC-13-02
 DRAWN: S. HUYNH DEC-13-02
 CHECKED: S. HUYNH DEC-13-02
 UPDATED: S. HUYNH Oct-13-15
 UPDATE DRAWN: P. Tran Oct-13-15
 APPROVED: S. HUYNH Oct-13-15

DWG. NAME: 5G151625RLR-APA-XNT3-4F0
 D 3CVE1
 SCALE: 1/1
 SHEET: 1 OF 1