



ISO 9001:2008/FAA Approved Facility

GPS+GSM+Iridium or GPS+Dual Iridium Antenna

P/N: 5G091516LRR-AP-GTTT-1-TLSC (GSM/L1-GPS/Iridium with all TNC Connectors)

P/N: 5G091216LRR-AP-GTTT-1-TLSC (GSM/L1/L2-GPS/Iridium with all TNC Connectors)

(Heavy Duty Suction Cup Mount Configuration, Other Mounting Options are Available)

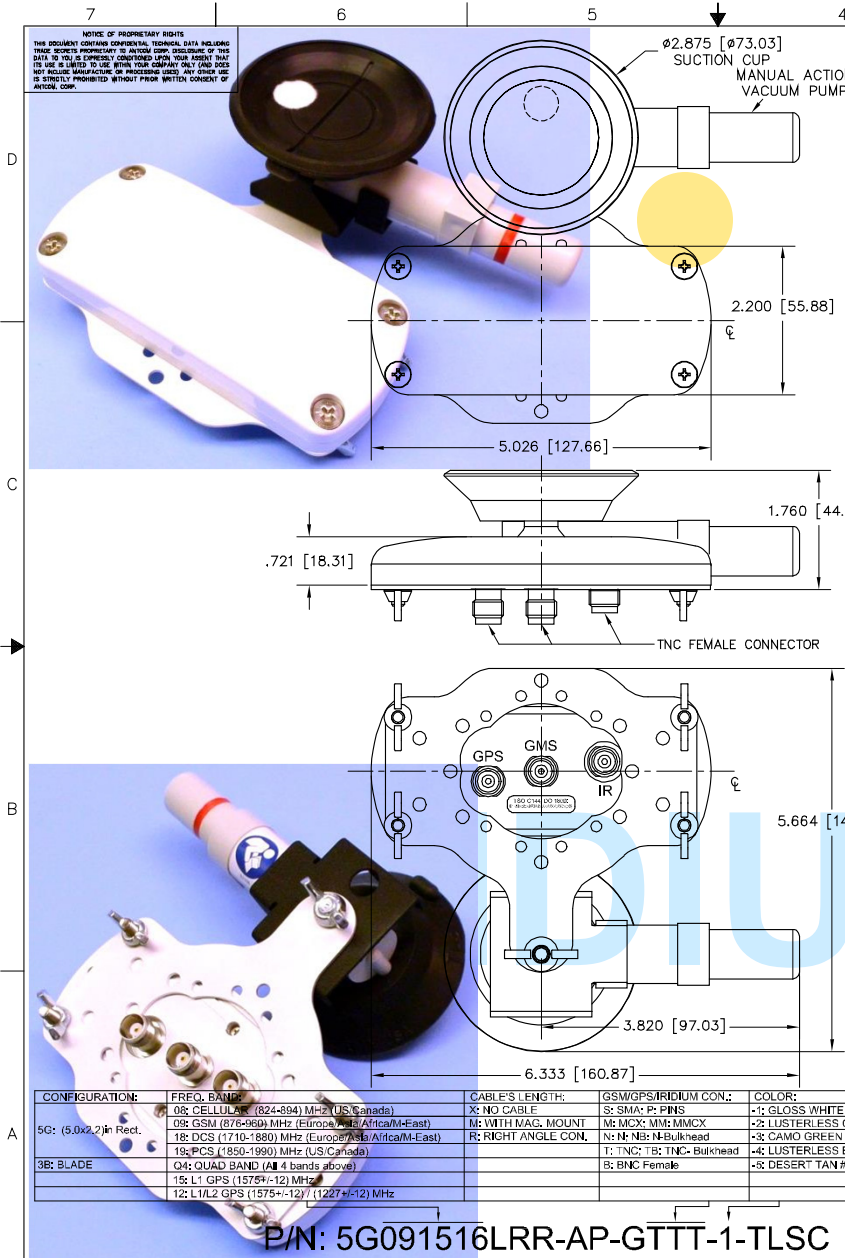
Antenna Mounts: <http://www.antcom.com/documents/catalogs/PeripheralAntennaProducts2.pdf>



FAA Approved TSO Antennas



ANTCOM CORPORATION . 367 Van Ness Way, Suite 602 . Torrance, CA 90501, USA . Tel: (310) 782-1076 . Fax: (310) 782-1086 . E-mail: [antennas@antcom.com](mailto:antennas@antcom.com) . <http://www.antcom.com>



ELECTRICAL:		SPECIFICATIONS		REVISIONS	
ZONE	REV	DESCRIPTION	DATE	APPROVED	
GPS (L1 or L1/L2. See P/N in Bottom Table)		IRIDIUM		GSM	
FREQUENCY: L1: (1575.4 ±13) L2: (1227.6 ±13) MHz		(1610.0- 1626.5) MHz		(See Bottom Table)	
RADIATION PATTERN: HEMISPHERICAL		HEMISPHERICAL		Vertical / Horizontal	
POLARIZATION: RHCP		RHCP		OMNI	
VSWR: < 1.5:1		< 1.5:1		< 2:1	
GAIN (dB): F.S. 4 ft G.P. F.S. 4 ft G.P.		4 ft G.P. F.S.			
@ 90° (Zenith): +4.6 +2.9 +1.8 +5.3		+4.9 +5.0			
@ 10° Elevation: -2.5 -1.8 -4.2 -2.3		-1.0 -2.5			
@ 20° Elevation: -1.1 +0.7 -2.9 +0.4		+1.5 -0.5			
@ 30° Elevation: +0.5 +1.7 -2.0 +2.3		+2.4 +1.0			
@ 60° to 90° Elevation: > 3.6 > 2.1 > 0.9 > 3.2		>+3.3 >+2.7			
BEAM WIDTH (3dB): 103° 146° 108° 74°		129° 98°-106°			
AXIAL RATIO @ Zenith: 2 dB		2 dB			
POWER HANDLING: 1 Watt		30 W			
LIGHTNING PROTECTION: DC GROUNDING		DC GROUNDING			
FILTER: 2 2-POL					
LNA GAIN: (33.0±1.0) dB		N/A			
LNA P 1dB Out: +16 dBm		N/A			
LNA NOISE FIGURE: 2.9 dB (Filter loss is Included)		N/A			
VOLTAGE/CURRENT: (+2.8 TO +28) Volts DC / (30 TO 50) mA		N/A			

**MECHANICAL:**  
 SIZE: WIDTH: 2.20 in. [55.88 mm], LENGTH: 5.026 in [127.66 mm], HEIGHT: 0.721 in. [18.31 mm]  
 WEIGHT: < 8.0 oz. (226 g)  
 FINISH: SKYDROL RESISTANT POLYURETHANE ENAMEL BASE IRIDIUM PER MIL-C-5441F  
 MATERIAL: 6061-T6 ALUMINUM ALLOY BASE COMPOSITE RADOME, IMPACT, ABRASION, UV, SOLVENT AND SKYDROL RESISTANCE, FIRE RETARDANT  
 CONNECTOR: GPS: TNC FEMALE (OPTION: SMA, TNC Bulkhead, N, N Bulkhead, BNC, MCX, MMCX, or Cable)

**ENVIRONMENTAL:**  
 TEMPERATURE: -67 °F TO +185 °F [-55 °C TO +85 °C]  
 ALTITUDE: 70,000 ft.  
 VIBRATION: > 30 G's  
 LEAKAGE: HERMETICALLY SEALED

**FEDERAL & MILITARY SPECIFICATIONS:**  
 DESIGN TO: FAA TSO-C144, DO-160D, D0-228, MIL-C-5541, MIL-E-5400, MIL-I-45208A, MIL-STD-810, AND SAE J1455

QTY	DESCRIPTION	PART NO	MATERIAL	FINISH	REV
4	WING NUT, 10-32	591-10WNut	-	-	5
1	WING NUT, 1/4-20	591-14WNut	-	-	4
4	MOUNTING SCREW: (10-32, 1")	MS24693C276	-	-	3
1	VACUUM PUMP SUCTION CUP	489-Alan	-	-	2
1	ANTENNA MOUNTING PLATE	482-New	-	-	1

CONFIGURATION:	FREQ. BANDS:	CABLE'S LENGTH:	GSM/GPS/IRIDIUM CON.:	COLOR:
08: CELLULAR (824-894) MHz (US/Canada)	X: NO CABLE	S: SMA; P: PINS	-1: GLOSS WHITE #17925 PER FED-STD-595B	
09: GSM (876-960) MHz (Europe/Asia/Africa/M-East)	M: WITH MAG. MOUNT	N: MCX; MM; MMCX	-2: LUSTERLESS GRAY #36320 PER FED-STD-595B	
18: DCS (1710-1800) MHz (Europe/Asia/Africa/M-East)	R: RIGHT ANGLE CON.	N: N; N3: N-Bulkhead	-3: CAMO GREEN #34094 PER FED-STD-595B	
19: PCS (1850-1900) MHz (US/Canada)		T: TNC; TB: TNC-Bulkhead	-4: LUSTERLESS BLACK #37038 PER FED-STD-595B	
04: QUAD BAND (All 4 bands above)		B: BNC Female	-5: DESERT TAN #33446 PER FED-STD-595B	
15: L1 GPS (1575±12) MHz				
12: L1/L2 GPS (1575±12) / (1227±12) MHz				

P/N: 5G091516LRR-AP-GTTT-1-TLSC

UNLESS OTHERWISE SPECIFIED DIMENSIONS ARE IN INCHES FRACTIONS SHOULD BE ANGLES ± 1/64 DECIMALS ± .010 TOLERANCE .010 PER ANSI Y14.5 REFERENCE ALL SURFACES BEAM EXTERNAL EDGES .010 TO .015 FILED .001 PER MIL-S-8879 DIA'S ON A CONICAL SURFACE MACHINED SURFACES .010

DO NOT SCALE DRAWING

ORIGINAL DRAWN: S. HUYNH July-12-09  
 ORIGINAL CHECKED: S. HUYNH July-12-09  
 UPDATED: S. HUYNH Nov-06-15  
 UPDATE DRAWN: P. TRAN Nov-06-15  
 APPROVED: S. HUYNH Nov-06-15

**ANTCOM CORP.** TORRANCE CALIFORNIA  
 HEAVY DUTY SUCTION CUP MOUNT  
 GSM/GPS/IRIDIUM  
 ANTENNA

REV: 1  
 D 3CVE1  
 5G091516LRR-AP-GTTT-1-TLSC  
 SCALE 1/1  
 SHEET 1 OF 1

NMO Connector Option is Now Available for Some Antennas