



Active L1/L2 GPS / IRIDIUM / Wi-Fi Antenna

4.9in Tall, Blade Configuration, Top Mount

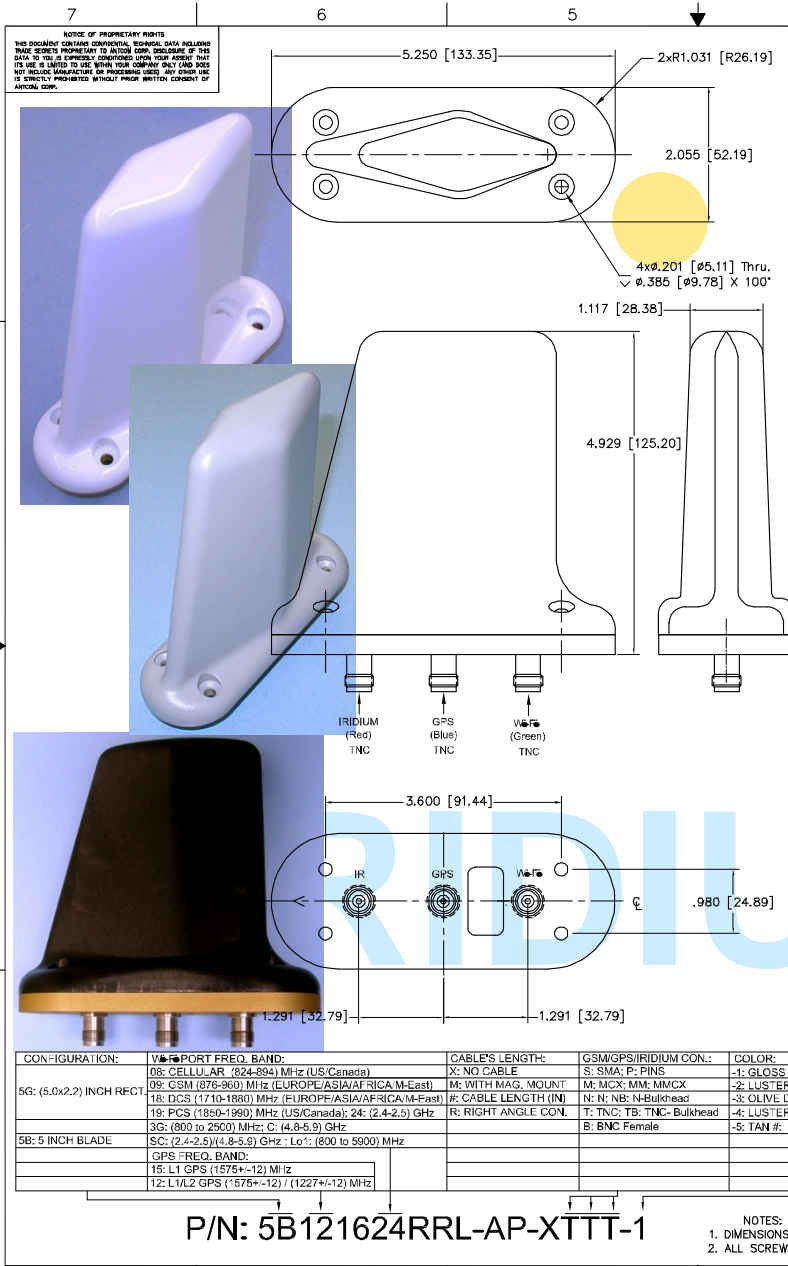
P/N: 5B121624RRL-AP-XTTT-1, with TNC, SMA, N, BNC Connector Options.



ISO 9001:2008/FAA Approved Facility

Antenna Mounts: <http://www.antcom.com/documents/catalogs/PeripheralAntennaProducts2.pdf>

ANTCOM CORPORATION, 367 Van Ness Way, Suite 602, Torrance, CA 90501, USA. Tel: (310) 782-1076, Fax: (310) 782-1086, E-mail: antennas@antcom.com, <http://www.antcom.com>



SPECIFICATIONS

ELECTRICAL:		GPS (L1 or L1/L2, See P/N in Bottom Table)		IRIDIUM		Wi-Fi	
FREQUENCY:		L1: (1575.4 ±13) MHz	L2: (1227.6 ±13) MHz	(1610.0 - 1626.5) MHz		(2400-2500) MHz	
RADIATION PATTERN:		HEMISPHERICAL		HEMISPHERICAL		Verticle	
POLARIZATION:		RHCP		RHCP		OMNI	
VSWR:		< 2:1		< 2:1		< 2:1	
GAIN (dB):		F.S.	4 ft G.P	F.S.	4 ft G.P	F.S.	F.S.
@ 90° (Zenith):		+4.6	+2.9	+1.8	+5.3	+4.9	+5.0
@ 10° Elevation:		-2.5	-1.8	-4.2	-2.3	-1.0	-2.5
@ 20° Elevation:		-1.1	+0.7	-2.9	+0.4	+1.5	-0.5
@ 30° Elevation:		+0.5	+1.7	-2.0	+2.3	+2.4	+1.0
@ 60° to 90° Elevation:		> 3.6	> 2.1	> 0.9	> 3.2	> +3.3	> +2.7
BEAM WIDTH (3dB):		103 °	146 °	108 °	74 °	129 °	98 °-106 °
AXIAL RATIO @ Zenith:		2 dB		2 dB		2 dB	
POWER HANDLING:		1 Watt		30 W		30 W	
LIGHTNING PROTECTION:		DC GROUNDING		DC GROUNDING		DC GROUNDING	
FILTER:		2 2-POL		2 2-POL		2 2-POL	
LNA GAIN:		(33.0±1.0) dB		N/A		N/A	
LNA P 1dB Out:		+16 dBm		N/A		N/A	
LNA NOISE FIGURE:		2.9 dB (Filter loss is Included)		N/A		N/A	
VOLTAGE/CURRENT:		(+2.8 TO +28) Volts DC / (30 TO 50) mA		N/A		N/A	

MECHANICAL:

SIZE: WIDTH: 2.055 in. [52 mm], LENGTH: 5.25 in. [133 mm], HEIGHT: 4.929 in. [125.2 mm]

WEIGHT: 11.6 oz. (329 g)

FINISH: SKYDROL RESISTANT POLYURETHANE ENAMEL BASE IRIDITE PER MIL-C-5441

MATERIAL: 6061-T6 ALUMINUM ALLOY BASE COMPOSITE RADOME, IMPACT, ABRASION, UV, SOLVENT, AND SKYDROL RESISTANCE, FIRE RETARDANT

CONNECTOR: GPS: TNC-F (Blue), IRIDIUM: TNC-F (Red), GSM+3G: TNC-F (Green) (OPTION: SMA, TNC, TNC Bulkhead, N, N Bulkhead, BNC, MCX, MMCX, or Cable)

MOUNTING: FIXED MOUNT
4 x 10-32 MOUNTING SCREWS PROVIDED

ENVIRONMENTAL:

TEMPERATURE: -67 °F TO +185 °F [-55 °C TO +85 °C]

ALTITUDE: 70,000 ft.

VIBRATION: > 30 G's

LEAKAGE: HERMETICALLY SEALED

FEDERAL & MILITARY SPECIFICATIONS:

FAA TSO-C144, DO-160D, D0-228, MIL-C-5541, MIL-E-5400, MIL-I-45208A, MIL-STD-810, AND SAE J1455

CONFIGURATION:	WIREPORT FREQ. BAND:	CABLE'S LENGTH:	GSM/GPS/IRIDIUM CON.:	COLOR:
06: CELLULAR (824-894) MHz (US/Canada)		X: NO CABLE	S: SMA; P: PINS	-1: GLOSS WHITE #7925 PER FED-STD-595B
09: GSM (870-960) MHz (EUROPE/ASIA/AFRICA/M-East)		R: WITH BRG. MOUNT	M: MCX; MM: MMCX	-2: LUSTERLESS GRAY #36320 PER FED-STD-595B
18: DCS (1710-1880) MHz (EUROPE/ASIA/AFRICA/M-East)		R: CABLE LENGTH (IN)	N: N; NB: N Bulkhead	-3: OLIVE DRAB GREEN #37038 PER FED-STD-595B
19: PCS (1850-1900) MHz (US/Canada); 24: (2.4-2.5) GHz		R: RIGHT ANGLE CON.	T: TNC; TB: TNC Bulkhead	-4: LUSTERLESS BLACK #37038 PER FED-STD-595B
3G: (800 to 2500) MHz; C: (4.8-5.9) GHz			B: BNC Female	-5: TAN #; FS 23446 or 33446, FED-STD-595
5B: 5 INCH BLADE				
GPS FREQ. BAND:				
15: L1 GPS (1575±.12) MHz				
12: L1/L2 GPS (1575±.12) / (1227±.12) MHz				

P/N: 5B121624RRL-AP-XTTT-1

NOTES: UNLESS OTHERWISE SPECIFIED:
1. DIMENSIONS IN BRACKETS ARE IN MILLIMETERS [mm]
2. ALL SCREWS ARE SUPPLIED BY ANTCOM CORPORATION

QUANTITY	DESCRIPTION	PART NO	MATERIAL	FINISH	REV
4	MOUNTING SCREW; (10-32, 1.25")	MS24693-C278	-	-	5
1			-	-	3
1			-	-	1

UNLESS OTHERWISE SPECIFIED DIMENSIONS ARE IN INCHES	ANTCOM CORP.
FRACTIONS: DECIMALS: ANGLES: ± 1/64 .005 .015 ± .1°	TORRANCE CALIFORNIA
TOLERANCE SURF PER ANS Y14.5	Avionics
REMOVE ALL BURRS	L1/L2 GPS/IRIDIUM/Wi-Fi
BREAK EXTERNAL EDGES TO .015	BLADE ANTENNA
FILED: 5/8" R	
DRIVER: S. HUYNH	
APPROVED: S. HUYNH	
DATE: Aug-23-10	
DO NOT SCALE DRAWING	

NMO Connector Option is Now Available for Some Antennas