



FAA Approved Facility

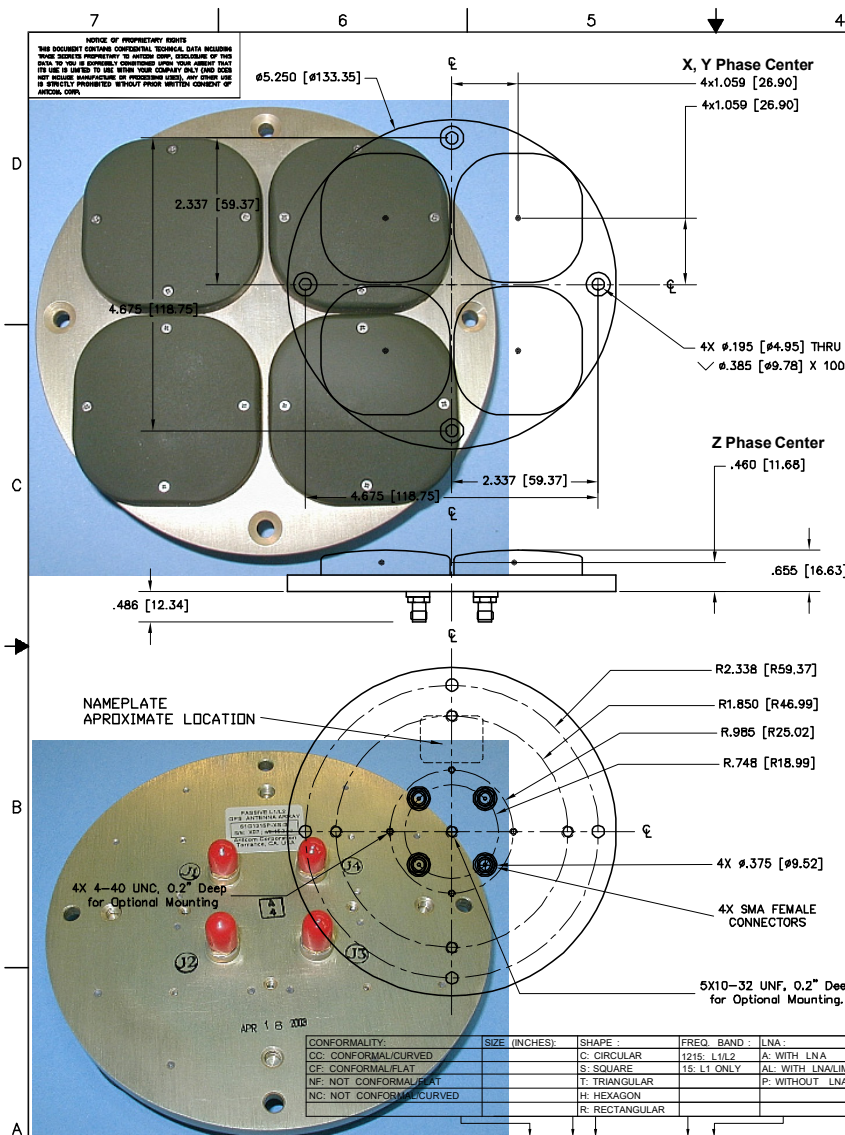
4-Element CRPA L1/L2 GPS Antenna Array (5.25" Dia. x 0.66" Thick), P/N: 4NF-5CG1215P-XS-X

“-PL-” or “-AL-” for Limiter Options for High Power Pulse Protection



ANTCOM CORPORATION . 367 Van Ness Way, Suite 602 . Torrance, CA 90501 . Tel: (310) 782-1076 . Fax: (310) 782-1086 . E-mail: antennas@antcom.com . http://www.antcom.com

Wide Band GNSS Option Is Available



SPECIFICATIONS

ELECTRICAL:

		L1: (1575.42 ±12) MHz		L2: (1227.60 ±12) MHz	
RADIATION PATTERN:		HEMISPHERICAL			
POLARIZATION:		RHCP		RHCP	
VSWR:		< 1.5:1		< 1.5:1	
IMPEDANCE:		50 ohms		50 ohms	
ANTENNA ELEMENT GAIN (dBic):		Free Space	3.5 in Dia.	4 ft G.P.	Free Space
@ 90° (ZENITH):		+ 4.5	+ 5.4	+ 2.4	+ 2.5
@ 10° Elevation:		- 1.5	- 1.6	- 1.7	- 4.3
@ 20° Elevation:		0.0	0.0	+ 0.9	- 3.0
@ 30° Elevation:		+ 1.1	+ 1.3	+ 2.0	- 1.5
@ 60 - 90° Elevation:		> 3.0	> 4.2	> 2.5	> 1.7
BEAM WIDTH (3dB):		112 Deg.	102 Deg.	145 Deg.	93 Deg.
AXIAL RATIO:		2 dB		2 dB	
NULL DEPTH:		> 30 dB (Analog), 55-60 dB (Digital)			
LIGHTNING PROTECTION:		DC GROUNDING			
POWER HANDLING:		200 Watt CW			

MECHANICAL:

SIZE: DIAMETER: 5.250 in. [133.35 mm]
 HEIGHT: 0.655 in. [16.64 mm]

WEIGHT: 1.2lbs. (544 g)

FINISH: SKYDROL RESISTANT POLYURETHANEENAMEL
 BASE IRIDITE PER MIL-C-5441

MATERIAL: 6061-T6 ALUMINUM ALLOY BASE
 COMPOSITE RADOME, IMPACT, ABRASION, UV, SOLVENT,
 SKYDROL RESISTANCE, AND FIRE RETARDANT

CONNECTOR: SMA FEMALE
 (OPTION: TNC, TNC Bulkhead, N, N Bulkhead,
 MCX, MMCX, or Cable)

ENVIRONMENTAL:

TEMPERATURE: -67 °F TO +185 °F [-55 °C TO +85 °C]
ALTITUDE: 70,000 ft.
VIBRATION: > 30 G's
LEAKAGE: HERMETICALLY SEAL

FEDERAL & MILITARY SPECIFICATIONS:

DESIGN TO: FAA TSO-C144, DO-160D, DO-228, MIL-C-5541,
 MIL-E-5400, MIL-1-45208A, MIL-STD-810, AND SAE J1455

ACCEPTANCE TEST PROCEDURE:

QUANTITY REQD	DESCRIPTION	PARTS LIST	PART NO	FINISH	REQ
4	MOUNTING SCREWS: 10-32, 3/4"		MS24693C274		5
A/R					3
1					1
-2	-1				10

P/N: 4NF-5CG1215P-XS-3

1. DIMENSIONS IN BRACKETS ARE IN MILLIMETERS [mm]
 NOTES: UNLESS OTHERWISE SPECIFIED:

NUMBER OF ELEMENT:	CABLE'S LENGTH :	CONNECTOR :	COLOR :
X: NO CABLE	S: SMA; P: PINS	-1: GLOSS WHITE #17925 PER FED-STD-595B	
M: MAG. N: NO MAG.	M: MCX; MM: MMCX	-2: LUSTERLESS GRAY #36320 PER FED-STD-595B	
#: CABLE LENGTH (IN)	N: NB; N: N-Bulkhead	-3: OLIVE DRAB GREEN #34031 PER FED-STD-595B	
R: RIGHT ANGLE CON.	T, TB: TNC; TNC-Bulkhead	-4: LUSTERLESS BLACK #37038 PER FED-STD-595B	

UNLESS OTHERWISE SPECIFIED DIMENSIONS ARE IN INCHES	FRACIONS	DECIMALS	ANGLES
± 1/64	± .001	± .005	± 1°
TOLERANCE SURFACES SEE TABLE 1			
REMOVE ALL BURRS			
DEBurr ALL EDGES .005 TO .015			
FILED IF .005 TO .015			
SPECIFY THREADS FOR .005-.0075			
DAYS ON A COMBINATION OF .005			
MACHINES SURFACES SEE TABLE 1			
DO NOT SCALE DRAWING			

ANTCOM CORP. TORRANCE CALIFORNIA

OUTLINE DRAWING:
 4 ELEMENT L1/L2 GPS
 CIRCULAR ANTENNA ARRAY

DATE: 04/15/13
 DRAWN BY: M. BOAS
 M. BOAS
 M07-29-01

APPROVED BY: S. HUYNH
 S. HUYNH
 M07-29-01

SCALE: 1/1

SHEET 1 OF 1

Antenna Mounts: http://www.antcom.com/documents/catalogs/PeripheralAntennaProducts2.pdf
 Amplifiers/Power Divider/Combiner/Filters: http://www.antcom.com/documents/catalogs/PeripheralAntennaProducts1.pdf