



FAA Approved Facility

4-Element CRPA L1/L2 GPS Antenna Array

P/N: 4NF-4SG1215P-XS-4-C-RoHS

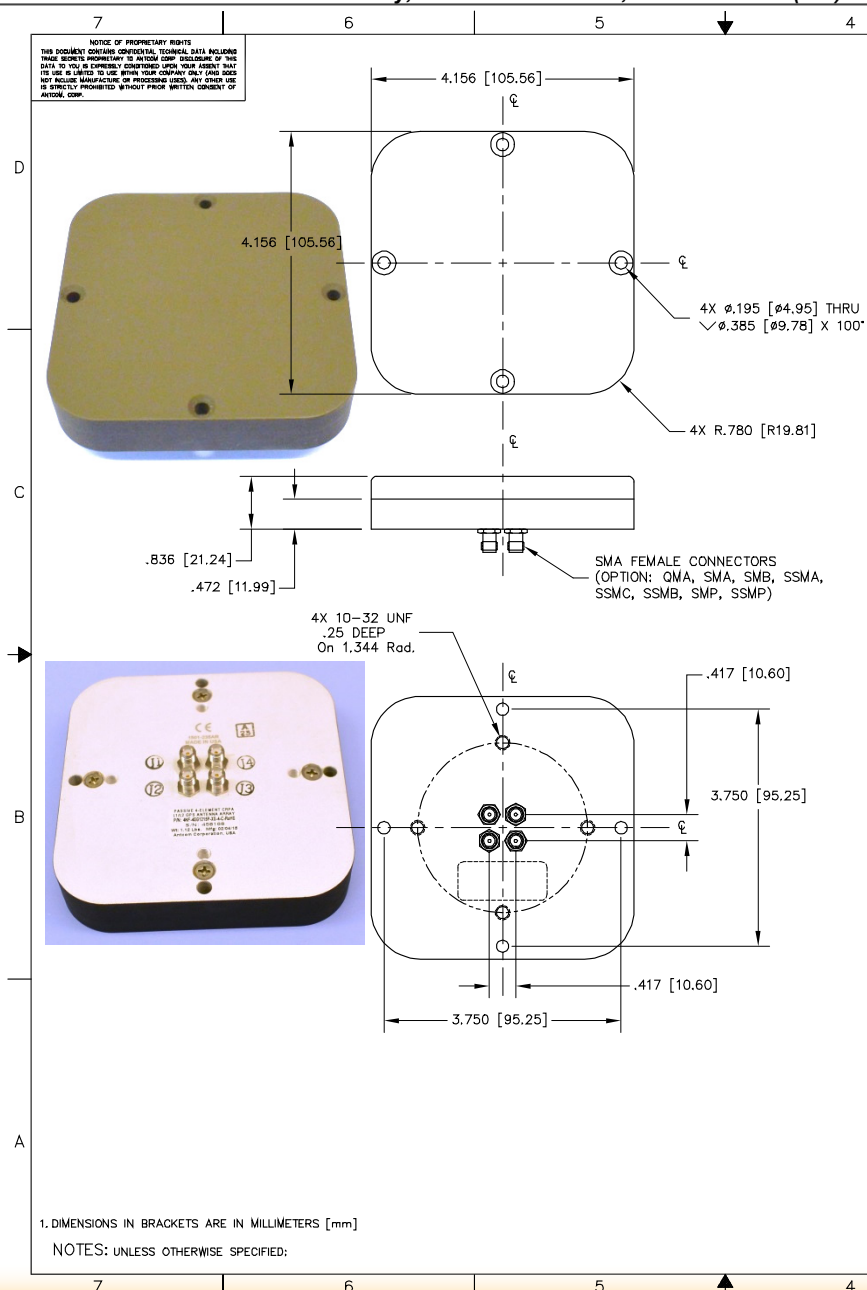
(4.2" x 4.2" x 0.84" Thick), Lusterless Black #37038 FED-STD-595B

"-PL-" or "-AL-" for Limiter Options for High Power Pulse Protection



ANTCOM CORPORATION . 367 Van Ness Way, Suite 602 . Torrance, CA 90501 . Tel: (310) 782-1076 . Fax: (310) 782-1086 . E-mail: antennas@antcom.com . http://www.antcom.com

Wide Band GNSS Option Is Available.
Compatibility to IGAS Receiver Options are Available.



SPECIFICATIONS

ELECTRICAL:

ZONE	REVISIONS					
	REV	DESCRIPTION	DATE	APPROVED		
FREQUENCY:		L1: (1575.42 ±12) MHz			L2: (1227.60 ±12) MHz	
RADIATION PATTERN:		HEMISPHERICAL				
POLARIZATION:		RHCP		RHCP		
VSWR:		< 1.5:1		< 1.5:1		
IMPEDANCE:		50 ohms		50 ohms		
ANTENNA ELEMENT GAIN (dBic):		Free Space	3.5 in Dia.	4 ft G.P.	Free Space	3.5 in Dia.
@ 90° (ZENITH):		+ 4.5	+ 5.4	+ 2.4	+ 2.5	+ 4.1
@ 10° Elevation:		- 1.5	- 1.6	- 1.7	- 4.3	- 3.2
@ 20° Elevation:		0.0	0.0	+ 0.9	- 3.0	- 1.6
@ 30° Elevation:		+ 1.1	+ 1.3	+ 2.0	- 1.5	- 0.3
@ 60 - 90° Elevation:		> 3.0	> 4.2	> 2.5	> 1.7	> 2.7
BEAM WIDTH (3dB):		112 Deg.	102 Deg.	145 Deg.	104 Deg.	93 Deg.
AXIAL RATIO:		2 dB		2 dB		
NULL DEPTH:		> 30 dB (Analog), 55-60 dB (Digital)				
LIGHTNING PROTECTION:		DC GROUNDING				
POWER HANDLING:		200 Watt CW				

MECHANICAL:

SIZE:	4.156 in [105.56 mm] SQUARE
HEIGHT:	0.836 in. [21.24 mm]
WEIGHT:	6.18 oz. (175.2 g)
FINISH:	SKYDROL RESISTANT POLYURETHANE ENAMEL BASE IRIDITE PER MIL-C-5441F
MATERIAL:	6061-T6 ALUMINUM ALLOY BASE COMPOSITE RADOME, IMPACT, ABRASION, UV, SOLVENT, SKYDROL RESISTANCE, AND FIRE RETARDANT
CONNECTOR:	SMA FEMALE (OPTION: QMA, SMA, SMB, SSMA, SSMC, SSMB, SMP, SSMP)

ENVIRONMENTAL:

TEMPERATURE:	-67 °F TO +185 °F [-55 °C TO +85 °C]
ALTITUDE:	70,000 ft.
VIBRATION:	> 30 G's
LEAKAGE:	HERMETICALLY SEAL

FEDERAL & MILITARY SPECIFICATIONS:

DESIGN TO:	FAA TSO-C144, DO-160D, DO-228, MIL-C-5541, MIL-E-5400, MIL-I-45208A, MIL-STD-810, AND SAE J1455
------------	--

ACCEPTANCE TEST PROCEDURE:

QUANTITY	REQD	DESCRIPTION	PARTS LIST	PART NO	FINISH	QTY
4	-	MOUNTING SCREWS: 10-32, 3/4"		MS24693C274	-	1
-2	-1	DESCRIPTION				1

UNLESS OTHERWISE SPECIFIED DIMENSIONS ARE IN INCHES FRACTIONS DECIMALS ANGLES ± 1/64 .004 .015 ± 1°		ORIGINALLY DESIGNED S. HUYNH May-28-01	ANTCOM CORP. TORRANCE, CALIFORNIA 4 ELEMENT L1/L2 GPS SQUARE ANTENNA ARRAY
TOLERANCE 5V PER ANSI Y14.5 REMOVE ALL BURRS BREAK EXTERNAL EDGES .005 TO .015 FILLET R .005 TO R .010 SURFACE FINISHES PER MIL-S-8878 DIMS ON A CORNER & .005 MACHINED SURFACES 12V		ORIGINALLY DESIGNED S. HUYNH May-28-01	
DO NOT SCALE DRAWING		DATE DRAWN P. TRAN Mar-22-13	
		APPROVED S. HUYNH Mar-22-13	
SCALE 1/1		REV 1	SHEET 1 OF 1 PART NO 4NF-4SG1215P-XS-4-C-ROHS

Antenna Mounts: <http://www.antcom.com/documents/catalogs/PeripheralAntennaProducts2.pdf>
Amplifiers/Power Divider/Combiner/Filters: <http://www.antcom.com/documents/catalogs/PeripheralAntennaProducts1.pdf>