



FAA Approved Facility

4-Element CRPA L1/L2 GPS Antenna Array in FRPA Foot Print

P/N: 4NC-3.5CG1215AL5-XS-4-0-RoHS (Active)

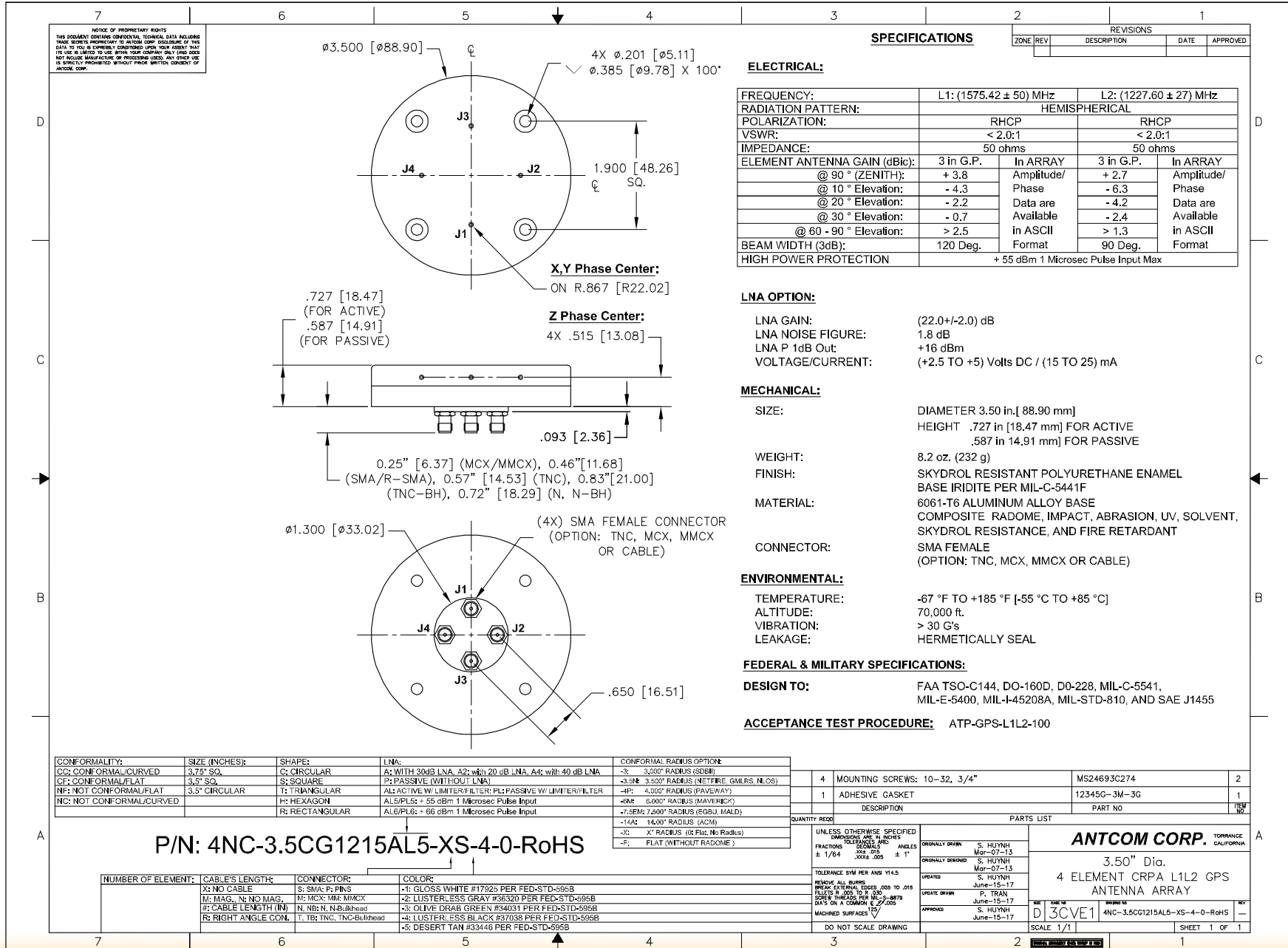
P/N: 4NC-3.5CG1215PL5-XS-4-0-RoHS (Passive)

Other Conformal Radius, Color and Connector Options Are Available

“-PL-” or “-AL-” for Limiter Options for High Power Pulse Protection



ANTCOM CORPORATION . 367 Van Ness Way, Suite 602 . Torrance, CA 90501 . Tel: (310) 782-1076 . Fax: (310) 782-1086 . E-mail: antennas@antcom.com . http://www.antcom.com



Antenna Mounts: http://www.antcom.com/documents/catalogs/PeripheralAntennaProducts2.pdf
 Amplifiers/Power Divider/Combiner/Filters: http://www.antcom.com/documents/catalogs/PeripheralAntennaProducts1.pdf