



FAA Approved Facility

# 4-Element CRPA L1/L2 GPS Antenna Array

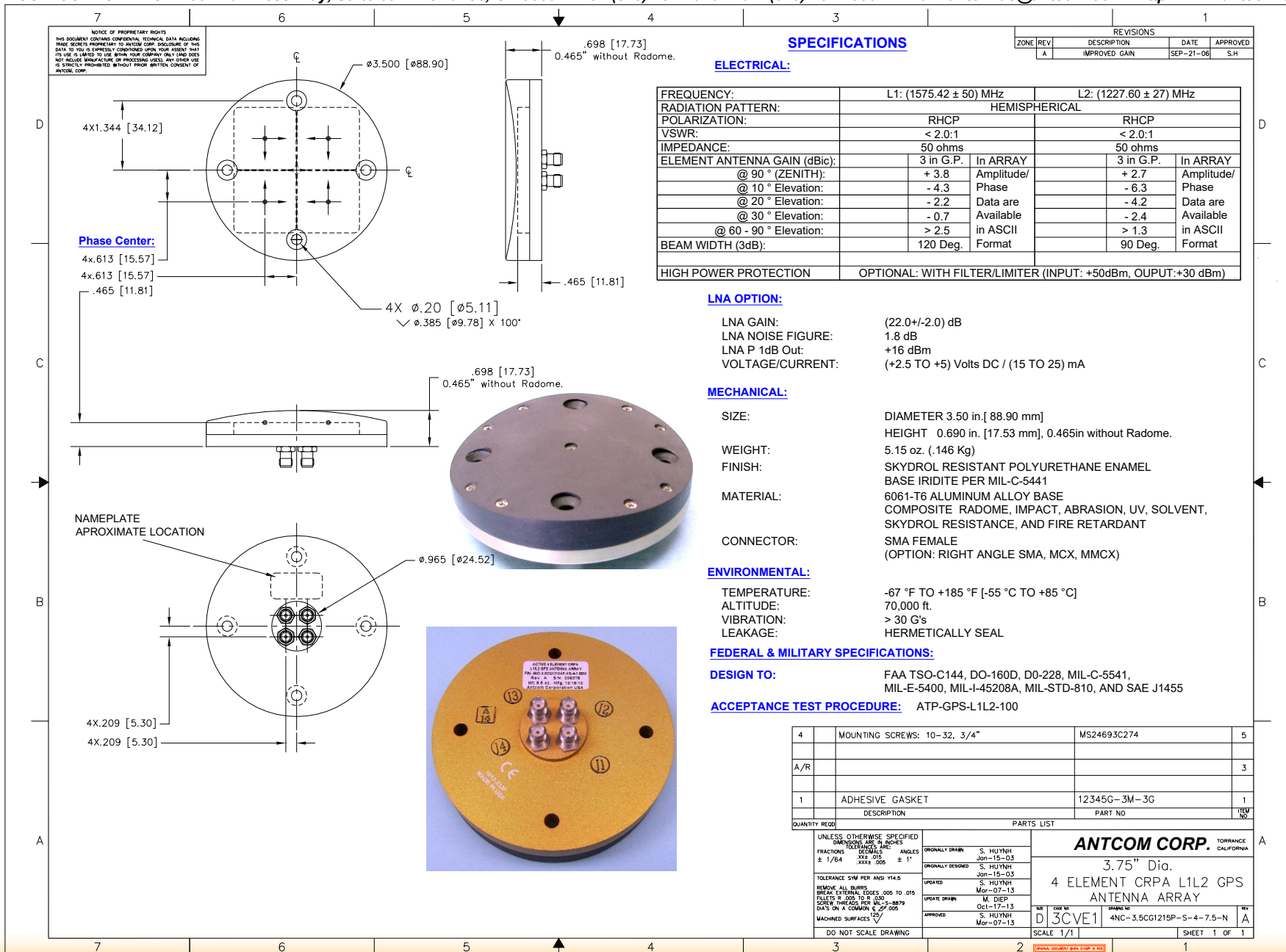
## P/N: 4NC-3.5CG1215P-S-4-7.5-N-RoHS Rev A

(3.5" Dia. x 0.69" Thick), 7.5" Conformal Radius, Lusterless Black #37038 FED-STD-595B

“-PL-” or “-AL-” for Limiter Options for High Power Pulse Protection



ANTCOM CORPORATION . 367 Van Ness Way, Suite 602 . Torrance, CA 90501 . Tel: (310) 782-1076 . Fax: (310) 782-1086 . E-mail: antennas@antcom.com . http://www.antcom.com



Antenna Mounts: http://www.antcom.com/documents/catalogs/PeripheralAntennaProducts2.pdf  
 Amplifiers/Power Divider/Combiner/Filterers: http://www.antcom.com/documents/catalogs/PeripheralAntennaProducts1.pdf