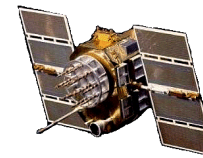




Dual Polarization (RHCP/LHCP) L1/L2 GPS Antenna

P/N: 42G1215RL-AA-XT-1

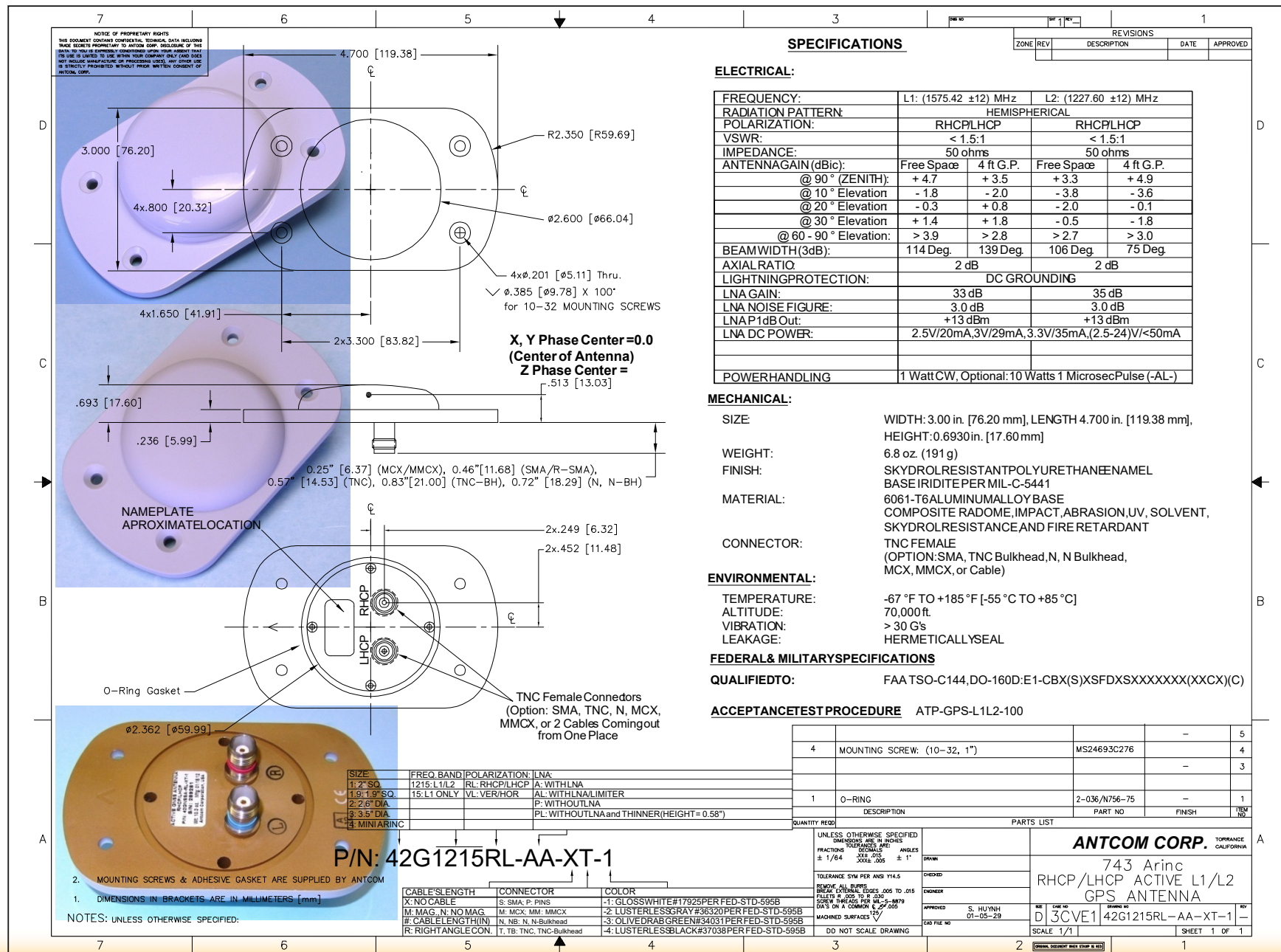
(4.7" x 3.0") 743 Arinc Configuration



ISO 9001:2008/FAA Approved Facility

Antenna Mounts: <http://www.antcom.com/documents/catalogs/PeripheralAntennaProducts2.pdf>

ANTCOM CORPORATION . 367 Van Ness Way, #602 . Torrance, CA 90501 . Tel: (310) 782-1076 . Fax: (310) 782-1086 . E-mail: antennas@antcom.com . <http://www.antcom.com>



NMO Connector Option is Now Available for Some Antennas