



FAA Approved Facility

Combined IEEE Zigbee S-Band/GPS Antenna, P/N: 3G1524RL-AP-XS-X

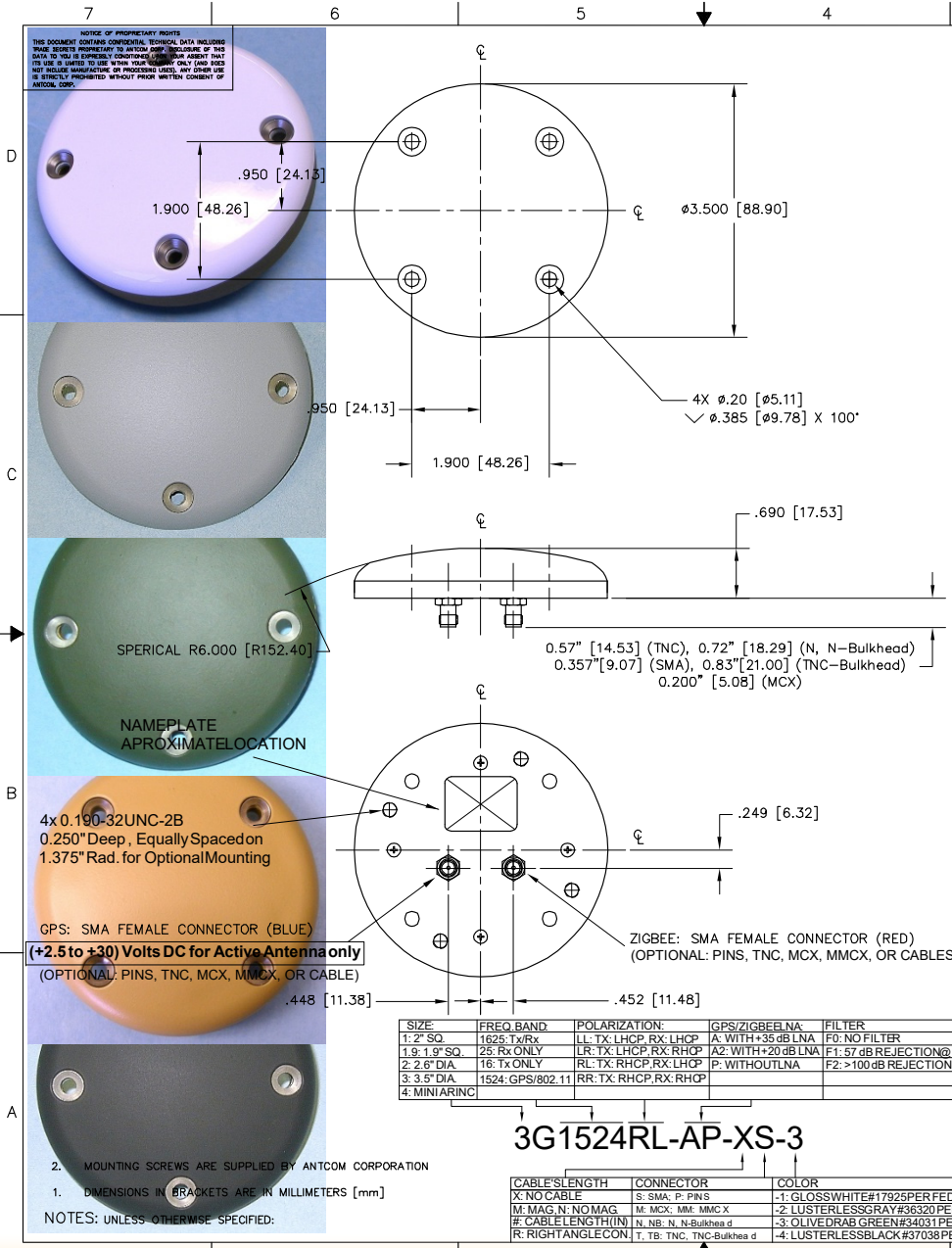
3.5" Diameter Configurations with Front/Back Mounting Option

Also Available in 1G, 2G, 4G, and 5G Configurations



Antenna Mounts/Adapters: <http://www.antcom.com/documents/catalogs/PeripheralAntennaProducts2.pdf>

ANTCOM CORPORATION . 367 Van Ness Way, Suite 602 . Torrance, CA 90501 . Tel: (310) 782-1076 . Fax: (310) 782-1086 . E-mail: antennas@antcom.com . <http://www.antcom.com>



ELECTRICAL:

	GPS	ZIGBEE
FREQUENCY:	L1: (1575.42±12) MHz	(2400 to 2500) MHz
RADIATION PATTERN:	HEMISPHERICAL	
POLARIZATION:	RHCP	LHCP
VSWR:	< 1.5:1	
GAIN (dBic):	4 ft G.P. Free Space	4 ft G.P. Free Space
@ 90° (Zenith)	+4.0	+5.4
@ 10° Elevation (Ave)	-1.0	-2.0
@ 20° Elevation (Ave)	+1.6	-0.4
@ 30° Elevation (Ave)	+2.4	+1.2
@ 45° Elevation (Ave)	+2.2	+3.1
@ 70° Elevation (Ave)	+3.3	+5.1
AXIAL RATIO @ Zenith:	2 dB	2 dB
POWER HANDLING:	>5 W	1 Watt
DC GROUNDING	YES (LIGHTNING PROTECTION)	
REJECTION @ (-50/+50) MHz	-45 dB / -70 dB	
@ (-100/+100) MHz	< -65 dB	
LNA GAIN:	(33 +/- 1) dB	N/A
LNA NOISE FIGURE:	2.2 dB	N/A
LNA VOLTAGE	(+2.5 to +30) Volts DC FROM Rx RF CON.	N/A
LNA DRAWING CURRENT:	< 30 mA	N/A

MECHANICAL:

SIZE: DIAMETER: 3.50 in. [88.90 mm]
HEIGHT: 0.690 in. [17.53 mm]

WEIGHT: 5.15 oz. (146 g)

FINISH: SKYDROL RESISTANT POLYURETHANE ENAMEL BASE IRIDIUM PER MIL-C-5441

COLOR: GLOSS WHITE #17925 PER FED-STD-595B
LUSTERLESS GRAY #36320 PER FED-STD-595B
OLIVE DRAB GREEN #34031 PER FED-STD-595B
LUSTERLESS BLACK #37038 PER FED-STD-595B

MATERIAL: 6061-T6 ALUMINUM ALLOY BASE COMPOSITE RADOME, IMPACT, ABRASION, UV, SOLVENT, AND SKYDROL RESISTANCE, FIRE RETARDANT

CONNECTOR: Tx (Red): SMA FEMALE CONNECTOR (RED) (OPTIONAL: PINS, TNC, MCX, MMCX, OR CABLES)
Rx (Blue): SMA FEMALE CONNECTOR (BLUE) (OPTIONAL: PINS, TNC, MCX, MMCX, OR CABLES)

ENVIRONMENTAL:

TEMPERATURE: -67 °F TO +185 °F [-55 °C TO +85 °C]

ALTITUDE: 70,000 ft.

VIBRATION: > 30 G's

LEAKAGE: HERMETICALLY SEAL

FEDERAL & MILITARY SPECIFICATIONS:

DESIGN TO: FAA TSO-C144, DO-160D, DO-228, MIL-C-5541, MIL-E-5400, MIL-I-45208A, MIL-STD-810, AND SAE J1455

ANTCOM CORP. TORRANCE, CALIFORNIA

3.5" DIAMETER, FIXED MOUNT GPS/ZIGBEE ANTENNA

DATE: 01-05-29

SCALE: 1/1

SHEET 1 OF 1