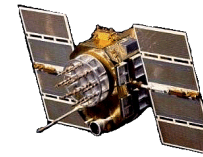




New 2-Ports, (Active L1/L2 GPS) & (LHCP-Thuraya/Tx-Globalstar) Antenna

P/N: 3G1216RL-XXX-X

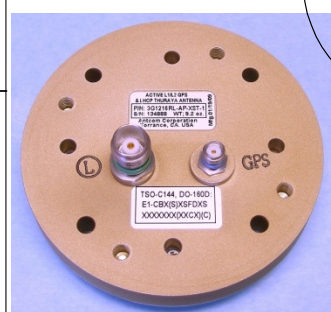
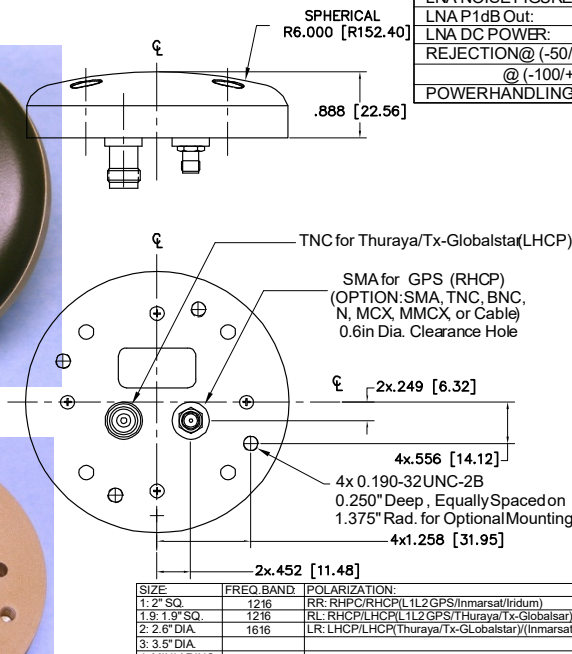
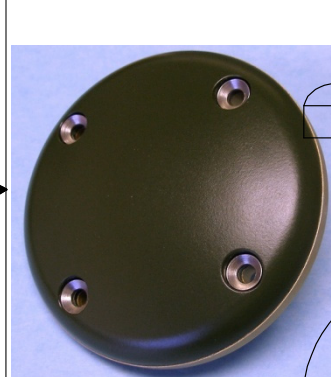
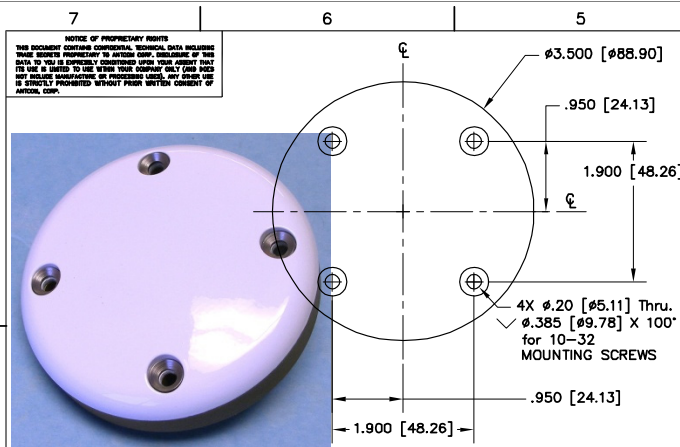
3.5" Diameter, Flat, Back Mount, Bottom Connector Configuration
2.6in Dia. & Arinc-743 Versions are also available



ISO 9001:2008/FAA Approved Facility

Antenna Mounts: <http://www.antcom.com/documents/catalogs/PeripheralAntennaProducts2.pdf>

ANTCOM CORPORATION . 367 Van Ness Way, #602 . Torrance, CA 90501 . Tel: (310) 782-1076 . Fax: (310) 782-1086 . E-mail: antennas@antcom.com . <http://www.antcom.com>



SPECIFICATIONS

ELECTRICAL:

	L1/L2 GPS		THURAYA		Tx-Globalstar
	Free Space	4 ft G.P.	Free Space	4 ft G.P.	Free Space
FREQUENCY(MHz):	L1: (1575.42 ±15)	L2: (1227.60 ±15)	Rx L-BAN D (1542.50 ±17.5)	Tx L-BAN D (1642.50 ±17.5)	(1609-1626)
ANTENNA GAIN @ Fc (dBic):	+5.5	+4.5	+3.1	+4.9	+4.3
@ 90° (ZENITH):	+5.5	+4.5	+3.1	+4.9	+4.3
@ 10° Elevation:	-1.2	-1.4	-3.8	-3.6	-2.2
@ 20° Elevation:	+0.3	+1.4	-2.0	-0.1	-0.6
@ 30° Elevation:	+1.8	+2.2	-0.5	-1.8	0.0
@ 60 - 90° Elevation:	> 4.8	> 3.8	> 2.7	> 3.0	> 2.6
BEAMWIDTH(3dB):	106 Deg.	130 Deg.	106 Deg.	75 Deg.	106 Deg.
POLARIZATION:	RHCP		LHCP		
RADIATION PATTERN:	HEMISPHERICAL				
VSWR:	< 1.5:1				
IMPEDANCE:	50 ohms				
AXIAL RATIO:	2 dB				
LIGHTNING PROTECTION:	DC GROUNDING				

LNA OPTION

LNA GAIN:	33 dB
LNA NOISE FIGURE:	3.0 dB
LNA P1dB Out:	+13 dBm
LNA DC POWER:	2.5V/20mA, 3V/29mA, 3.3V/35mA, (2.5-24)V/<50mA
REJECTION @ (-50/+50) MHz:	-40 dB / -40 dB
@ (-100/+100) MHz:	< -65 dB
POWER HANDLING:	200 Watts CW (WITHOUT LNA), 1 Watt CW (WITH LNA)

MECHANICAL:

- SIZE: DIAMETER: 3.50 in. [88.90 mm]
HEIGHT: 0.888 in. [22.56 mm]
- WEIGHT: 9.2 oz. (261g)
- FINISH: SKYDROL RESISTANT POLYURETHANE ENAMEL
BASE IRIDIUM PER MIL-C-5441
- MATERIAL: 6061-T6 ALUMINUM ALLOY BASE
COMPOSITE RADOME, IMPACT, ABRASION, UV, SOLVENT,
SKYDROL RESISTANCE AND FIRE RETARDANT
- CONNECTOR: SMA FEMALE
(OPTION: TNC, TNC Bulkhead, N, N Bulkhead,
MCX, MMCX, or Cable)
- ENVIRONMENTAL:
TEMPERATURE: -67 °F TO +185 °F [-55 °C TO +85 °C]
ALTITUDE: 70,000ft.
VIBRATION: > 30 G's
LEAKAGE: HERMETICALLY SEALED

FEDERAL & MILITARY SPECIFICATIONS

- DESIGN TO: FAA TSO-C144, DO-160D, D0-228, MIL-C-5541,
MIL-E-5400, MIL-I-45208A, MIL-STD-810, AND SAE J1455

ACCEPTANCE TEST PROCEDURE ATP-GPS-L1L2-100

SIZE	FREQ. BAND	POLARIZATION	LNA
1: 2" SQ.	1216	RR: RHCP/RHCP(L1/L2 GPS/Inmarsat/Iridium)	A: WITH LNA
1.9: 1.9" SQ.	1216	RL: RHCP/LHCP(L1/L2 GPS/Thuraya/Tx-Globalstar)	AL: WITH LNA/LIMITER
2: 2.6" DIA.	1616	LR: LHCP/LHCP(Thuraya/Tx-Globalstar/Inmarsat/Iridium)	P: WITHOUT LNA
3: 3.5" DIA.			
4: MINI ARINC			

QUANTITY REQD.	DESCRIPTION	PARTS LIST	PART NO.	FINISH	ITEM NO.
4	MOUNTING SCREWS: 10-32, 1", Item 579		J507C1032R16	-	3
4	WASHER, CUSTOM C'SINK		3G15P1001-6	-	2
1	GASKET		3G15P1001-3G	-	1

P/N: 3G1216RL-AP-XST-1

CABLE LENGTH	L-Band/GPS Connector:	COLOR
X: NO CABLE	S: SMA; B: BNC	-1: GLOSS WHITE #17925 PER FED-STD-595B
M: MAG. N: No Mag.	M: MCX; MM: MMCX	-2: LUSTERLESS GRAY #36320 PER FED-STD-595B
#: CABLE LENGTH (IN)	N: N; NB: N-Bulkhead	-3: OLIVE DRAB GREEN #34031 PER FED-STD-595B
R: RIGHT ANGLE CON.	T: TNC; TB: TNC-Bulkhead	-4: LUSTERLESS BLACK #37038 PER FED-STD-595B

UNLESS OTHERWISE SPECIFIED DIMENSIONS ARE IN INCHES FRACTIONS DECIMALS ANGLES ± 1/64 .001 .015 ± .1°

TOLERANCE SURF PER ANSI Y14.5

FINISH: UNLESS OTHERWISE SPECIFIED

DATE: 03/05/09

DESIGNED BY: S. HUYNH

DATE: 02/22/09

DO NOT SCALE DRAWING

SCALE 1/1

ANTCOM CORP. TORRANCE CALIFORNIA

3.5" Dia., (L1/L2 GPS) & (Thuraya/Tx-Globalstar) ANTENNA

D 3CVE1 3G1216RL-AP-XXX-X

SCALE 1/1 SHEET 1 OF 1

NMO Connector Option is Now Available for Some Antennas