



FAA Approved Facility

RHCP/LHCP L1/L2GPS Antenna, P/N: 3G1215RL-PP-XS-X RevA (Old P/N: 3G1215PJ2-XS-1)

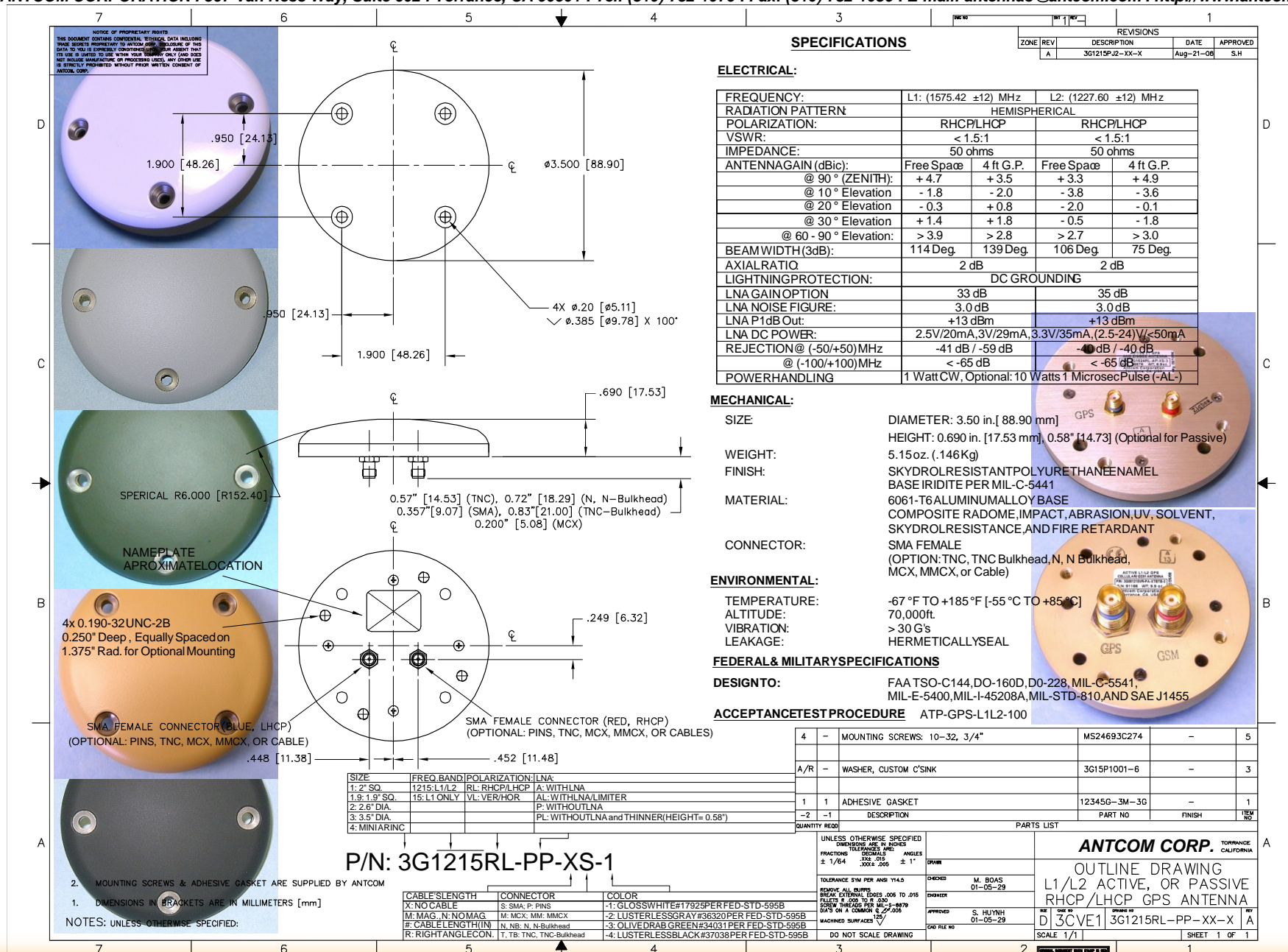
Dual Linear (V/H) L1/L2GPS Antenna, P/N: 3G1215VH-PP-XS-X RevA

3.5" Diameter Configurations with Front/Back Mounting Option

Antenna Mounts: <http://www.antcom.com/documents/catalogs/PeripheralAntennaProducts2.pdf>



ANTCOM CORPORATION . 367 Van Ness Way, Suite 602 . Torrance, CA 90501 . Tel: (310) 782-1076 . Fax: (310) 782-1086 . E-mail: antennas@antcom.com . <http://www.antcom.com>



http://www.antcom.com/documents/catalogs/PeripheralAntennaProducts1.pdf (Amplifiers/Power Divider/Combiner/Filters)