



FAA Approved Facility

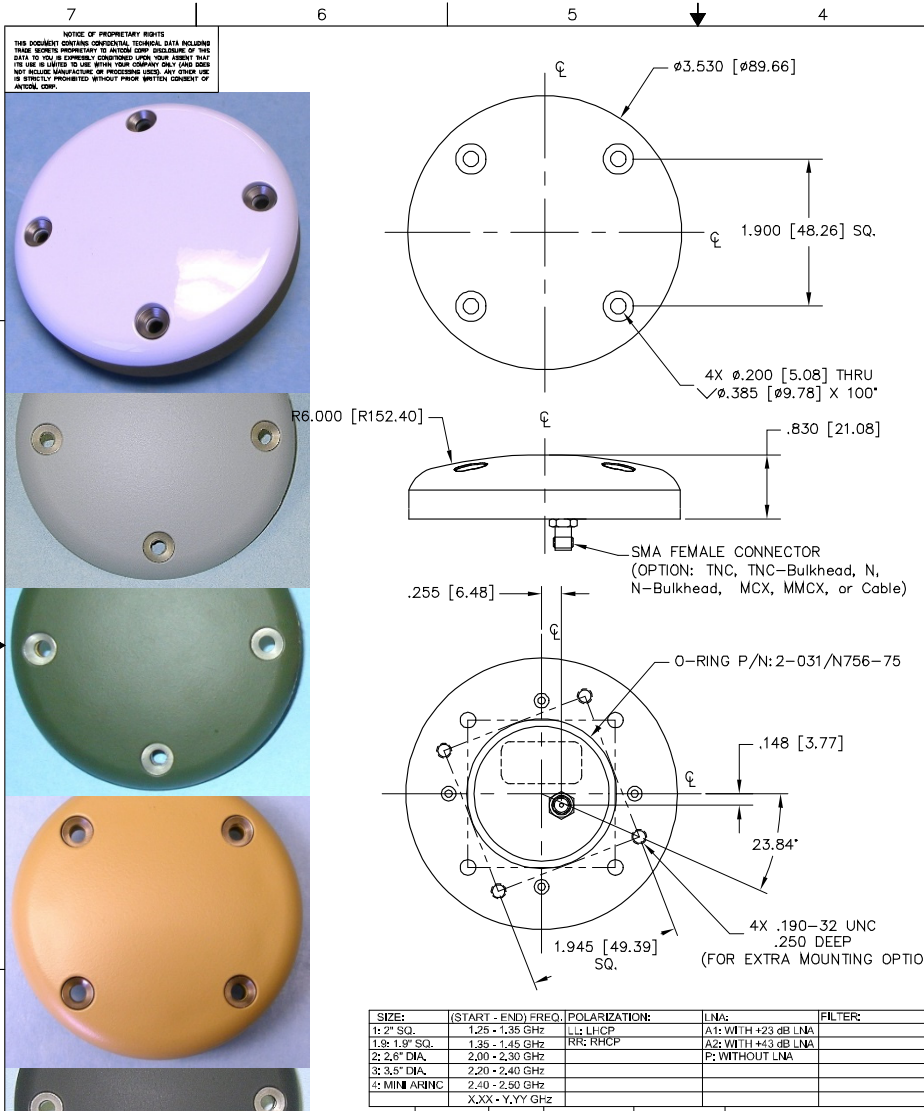
(0.81-0.96) GHz Antennas, P/N: 3G0.81-0.96RR-P-XS-1 (RHCP); P/N: 3G 0.81-0.96 LL-P-XS-1 (LHCP) GSM 800
 (1.25-1.35) GHz Antennas, P/N: 3G1.25-1.35RR-P-XS-1 (RHCP); P/N: 3G1.25-1.35LL-P-XS-1 (LHCP)
 (1.35-1.45) GHz Antennas, P/N: 3G1.35-1.45RR-P-XS-1 (RHCP); P/N: 3G1.35-1.45LL-P-XS-1 (LHCP)
 (1.70-1.90) GHz Antennas, P/N: 3G1.70-1.90RR-P-XS-1 (RHCP); P/N: 3G1.70-1.90LL-P-XS-1 (LHCP) GSM 1800
 (1.90-2.20) GHz Antennas, P/N: 3G1.90-2.20RR-P-XS-1 (RHCP); P/N: 3G1.90-2.20LL-P-XS-1 (LHCP) UMTS 2100
 (2.00-2.30) GHz Antennas, P/N: 3G2.00-2.30RR-P-XS-1 (RHCP); P/N: 3G2.00-2.30LL-P-XS-1 (LHCP)
 (2.20-2.40) GHz Antennas, P/N: 3G2.20-2.40RR-P-XS-1 (RHCP); P/N: 3G2.20-2.40LL-P-XS-1 (LHCP)
 (2.40-2.50) GHz Antennas, P/N: 3G2.40-2.50RR-P-XS-1 (RHCP); P/N: 3G2.40-2.50LL-P-XS-1 (LHCP)
 (2.56-2.69) GHz Antennas, P/N: 3G2.56-2.69RR-P-XS-1 (RHCP); P/N: 3G2.56-2.69LL-P-XS-1 (LHCP)



ANTCOM CORPORATION . 367 Van Ness Way, Suite 602 . Torrance, CA 90501 . Tel: (310) 782-1076 . Fax: (310) 782-1086 . E-mail: antennas@antcom.com . http://www.antcom.com

Other Frequencies, Antenna Sizes, Connectors/Locations, and Mounting Configurations are Available

NMO Connector is Now Available for Some Antennas



SPECIFICATIONS

ELECTRICAL:

RADIATION PATTERN:	HEMISPHERICAL
POLARIZATION:	RHCP or LHCP
VSWR:	< 1.5:1
GAIN (dB):	4 ft G.P.
@ 90° (Zenith):	+4.6
@ 10° Elevation (Ave):	-1.1
@ 20° Elevation (Ave):	+2.2
@ 30° Elevation (Ave):	+2.2
@ 45° Elevation (Ave):	+3.4
@ 70° Elevation (Ave):	+4.4
Beam Width (3dB):	110°
AXIAL RATIO @ Zenith:	2.0 dB
IMPEDANCE:	50 Ohms
POWER HANDLING:	200 Watt
DC GROUNDING:	YES (LIGHTNING PROTECTION)

MECHANICAL:

SIZE:	DIAMETER = 3.53 in. [89.66 mm] HEIGHT = 0.830 in. [21.08 mm]
WEIGHT:	8.5 oz. (241 g)
FINISH:	SKYDROL RESISTANT POLYURETHANE ENAMEL BASE IRIDIUM PER MIL-C-5441F
COLOR:	GLOSS WHITE #17925 PER FED-STD-595B LUSTERLESS GRAY #36320 PER FED-STD-595B OLIVE DRAB GREEN #34031 PER FED-STD-595B LUSTERLESS BLACK #37038 PER FED-STD-595B
MATERIAL:	6061-T6 ALUMINUM ALLOY BASE COMPOSITE RADOME, IMPACT, ABRASION, UV, SOLVENT, AND SKYDROL RESISTANCE, FIRE RETARDANT
CONNECTOR:	SMA FEMALE (OPTION: TNC, TNC Bulkhead, N, N Bulkhead, MMCX, MMCX, or Cable)

ENVIRONMENTAL:

TEMPERATURE:	-67 °F TO +185 °F [-55 °C TO +85 °C]
ALTITUDE:	70,000 ft.
VIBRATION:	> 30 G's
LEAKAGE:	HERMETICALLY SEAL

FEDERAL & MILITARY SPECIFICATIONS:

DESIGN TO: FAA TSO-C144, DO-160D, D0-228, MIL-C-5541, MIL-E-5400, MIL-I-45208A, MIL-STD-810, AND SAE J1455

SIZE:	(START - END) FREQ.	POLARIZATION:	LNA:	FILTER:
1: 2" SQ.	1.25 - 1.35 GHz	LL: LHCP	A1: WITH +23 dB LNA	
1.8: 1.9" SQ.	1.35 - 1.45 GHz	RR: RHCP	A2: WITH +4.3 dB LNA	
2: 2.6" DIA.	2.00 - 2.30 GHz		P: WITHOUT LNA	
3: 3.5" DIA.	2.20 - 2.40 GHz			
4: MINI AIRINC	2.40 - 2.50 GHz			
	X,XX - Y,YY GHz			

P/N: 3GX.XX-Y.YYRR-P-XS-1

2. MOUNTING SCREWS ARE SUPPLIED BY ANTCOM CORPORATION
 1. DIMENSIONS IN BRACKETS ARE IN MILLIMETERS [mm]
 NOTES: UNLESS OTHERWISE SPECIFIED:

CABLE LENGTH:	CONNECTOR:	COLOR:
X: NO CABLE	S: SMA; P: PINS	-1: GLOSS WHITE #17925 PER FED-STD-595B
M: WITH MAG. MOUNT	M: MMCX; N: MMCX	-2: LUSTERLESS GRAY #36320 PER FED-STD-595B
IF: CABLE LENGTH (IN)	N, NB: N, N-Bulkhead	-3: OLIVE DRAB GREEN #34031 PER FED-STD-595B
R: RIGHT ANGLE COM.	T, TB: TNC, TNC-Bulkhead	-4: LUSTERLESS BLACK #37038 PER FED-STD-595B
		-5: TAN #33446 PER FED-STD-595B

ANTCOM CORP. TORRANCE CALIFORNIA

Di. FLAT FIXED MOUNT
S/WIFI ANTENNA

UNLESS OTHERWISE SPECIFIED TOLERANCES ARE: DIMENSIONS ARE IN INCHES UNLESS OTHERWISE SPECIFIED
 FRACTIONS DECIMALS
 ± 1/64 .002 .015
 .0005 .001 .005

REVISION ALL REVISIONS TO BE MADE BY THE DESIGNER
 BREAK EXTENDS TO THE NEXT DIMENSION LINE
 DIMENSIONS ARE TO CENTER UNLESS OTHERWISE SPECIFIED
 MACHINED SURF

DO NOT SCALE DRAWING

QUANTITY REQD PER P/N

PARTS LIST

QTY	DESCRIPTION	PART NO.	MATERIAL	FINISH	TEST NO.
10	MOUNTING SCREWS: 10-32, 3/4"	MS24693C274			
1	O-RING	2-031/N756-7			

DATE: 15-03
 DESIGNED: S. HUYNH
 UPDATED: S. HUYNH
 Feb-01-13
 P. TRAN
 Feb-01-13
 S. HUYNH
 Feb-01-13

SCALE 1/1 SHEET 1 OF 1