



FAA Approved Facility

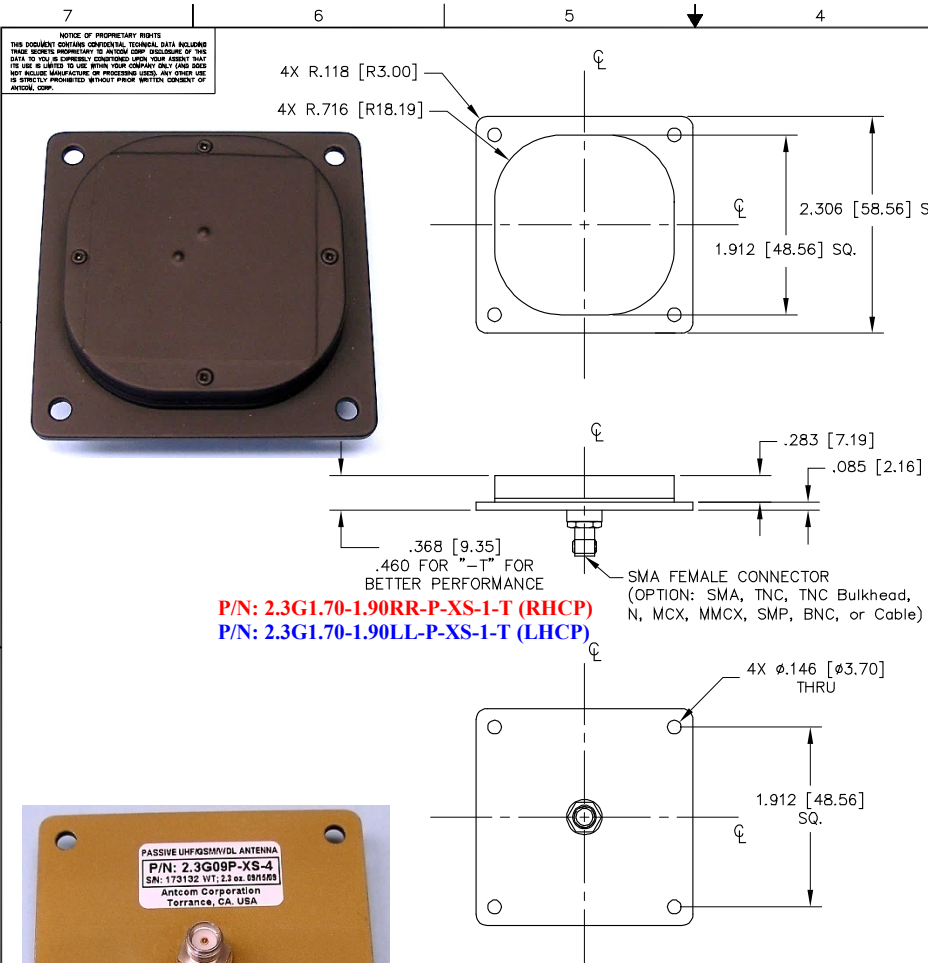
(0.81-0.96) GHz Antennas, P/N: 2.3G0.81-0.96RR-P-XS-1 (RHCP); P/N: 2.3G 0.81-0.96 LL-P-XS-1 (LHCP)
 (1.25-1.35) GHz Antennas, P/N: 2.3G1.25-1.35RR-P-XS-1 (RHCP); P/N: 2.3G1.25-1.35LL-P-XS-1 (LHCP)
 (1.35-1.45) GHz Antennas, P/N: 2.3G1.35-1.45RR-P-XS-1 (RHCP); P/N: 2.3G1.35-1.45LL-P-XS-1 (LHCP)
 (1.70-1.90) GHz Antennas, P/N: 2.3G1.70-1.90RR-P-XS-1 (RHCP); P/N: 2.3G1.70-1.90LL-P-XS-1 (LHCP)
 (1.90-2.20) GHz Antennas, P/N: 2.3G1.90-2.20RR-P-XS-1 (RHCP); P/N: 2.3G1.90-2.20LL-P-XS-1 (LHCP)
 (2.00-2.30) GHz Antennas, P/N: 2.3G2.00-2.30RR-P-XS-1 (RHCP); P/N: 2.3G2.00-2.30LL-P-XS-1 (LHCP)
 (2.20-2.40) GHz Antennas, P/N: 2.3G2.20-2.40RR-P-XS-1 (RHCP); P/N: 2.3G2.20-2.40LL-P-XS-1 (LHCP)
 (2.40-2.50) GHz Antennas, P/N: 2.3G2.40-2.50RR-P-XS-1 (RHCP); P/N: 2.3G2.40-2.50LL-P-XS-1 (LHCP)
 (2.56-2.69) GHz Antennas, P/N: 2.3G2.56-2.69RR-P-XS-1 (RHCP); P/N: 2.3G2.56-2.69LL-P-XS-1 (LHCP)

GSM 800
GSM 1800
UMTS 2100

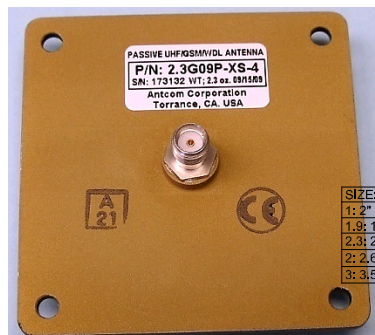


ANTCOM CORPORATION . 367 Van Ness Way, Suite 602 . Torrance, CA 90501 . Tel: (310) 782-1076 . Fax: (310) 782-1086 . E-mail: antennas@antcom.com . http://www.antcom.com

Other Frequencies, Antenna Sizes, Connectors/Locations, and Mounting Configurations are Available



P/N: 2.3G1.70-1.90RR-P-XS-1-T (RHCP)
P/N: 2.3G1.70-1.90LL-P-XS-1-T (LHCP)



SIZE:	FREQUENCY:	LNA:
1: 2" SQ.	0.90-0.93; (0.902-0.928) GHz	A2: WITH 20 dB LNA
1.9; 1.9" SQ.	0.81-0.96; (0.810-0.960) GHz	A4: WITH 40 dB LNA
2.3; 2.3" SQ.	0.96-0.99; (0.968-0.988) GHz	P: WITHOUT LNA
2: 2.6" DIA.		P2: WITHOUT LNA, WITH RHCP/LHCP POLARIZATION
3: 3.5" DIA.	X.XX-X.XX (GHz):	P2L: WITHOUT LNA, WITH DUAL LINEAR POLARIZATION

P/N: 2.3GX.XX-X.XXP-XS-4

CABLE'S LENGTH:	CONNECTOR:	COLOR:
X: NO CABLE	S: SMA; P, P2: PINS	-1: GLOSS WHITE #17925 PER FED-STD-595B
M: MAG; N: NO MAG.	M: MCX; MM: MMCX	-2: LUSTERLESS GRAY #36320 PER FED-STD-595B
#: CABLE LENGTH (IN)	N: NB; RS: R-SMA	-3: OLIVE DRAB GREEN #34031 PER FED-STD-595B
R: RIGHT ANGLE CON.	T, TB: TNC, TNC-Bulkhead	-4: LUSTERLESS BLACK #37038 PER FED-STD-595B
		-5: TAN #33446 PER FED-STD-595B

1. DIMENSIONS IN BRACKETS ARE IN MILLIMETERS [mm]
NOTES: UNLESS OTHERWISE SPECIFIED:

SPECIFICATIONS

REVISIONS				
ZONE	REV	DESCRIPTION	DATE	APPROVED
A		"-T" P/N	12/06/12	S.H

ELECTRICAL:

FREQUENCY:	GSM (902 - 928) MHz
RADIATION PATTERN:	HEMISPHERICAL
POLARIZATION:	RHCP
VSWR:	< 2:1
IMPEDANCE:	50 ohms
ANTENNA GAIN (dBic):	> 2 dB
POWER HANDLING:	150 W
LIGHTNING PROTECTION:	DC GROUNDING

MECHANICAL:

SIZE:	2.306 in. [58.56 mm] SQ. HEIGHT: 0.368 in. [9.35 mm]
WEIGHT:	2.4 oz. (68 g)
FINISH:	SKYDROL RESISTANT POLYURETHANE ENAMEL BASE IRIDITE PER MIL-C-5541F
MATERIAL:	6061-T6 ALUMINUM ALLOY BASE COMPOSITE RADOME, IMPACT, ABRASION, UV, SOLVENT, SKYDROL RESISTANCE, AND FIRE RETARDANT
CONNECTOR:	SMA FEMALE (OPTION: SMA, TNC, TNC Bulkhead, N, N Bulkhead, MCX, MMCX, SMP, BNC, or Cable)

ENVIRONMENTAL:

TEMPERATURE:	-67 °F TO +185 °F [-55 °C TO +85 °C]
ALTITUDE:	70,000 ft.
VIBRATION:	> 30 G's
LEAKAGE:	HERMETICALLY SEALED

FEDERAL & MILITARY SPECIFICATIONS:

FAA TSO-C144, DO-160D, DO-228, MIL-C-5541, MIL-E-5400, MIL-I-45208A, MIL-STD-810, AND SAE J1455

ACCEPTANCE TEST PROCEDURE: ATP-GPS-L1L2-100

QUANTITY REQD	DESCRIPTION	PARTS LIST	PART NO	FINISH	NEW
					2
					1

UNLESS OTHERWISE SPECIFIED DIMENSIONS ARE IN INCHES FRACTIONS DECIMALS ANGLES ± 1/64 .001 ± .010 ± 1°		ORIGINAL DRAWN S. HUYNH Aug-25-09 ORIGINAL DESIGNED S. HUYNH Aug-25-09 UPDATED S. HUYNH Dec-06-12 UPDATE DRAWN P. TRAN Dec-06-12 APPROVED S. HUYNH Dec-06-12	ANTCOM CORP. TORRANCE, CALIFORNIA 2.3" SQUARE, UHF/GSM/WDL ANTENNA D 3CVE1 2.3GX.XX-X.XXP-XS-4 A SCALE 1/1 SHEET 1 OF 1
--	--	--	---