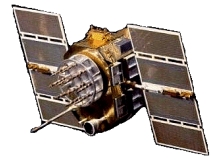




ISO 9001:2008/FAA Approved Facility

Active L1 GPS Antenna, P/N: 0.9G15A2-6RM-4 Rev B

1.2" Square, Front Mount, Back Cable Configurations



ANTCOM CORPORATION . 367 Van Ness Way, #602 . Torrance, CA 90501 . Tel: (310) 782-1076 . Fax: (310) 782-1086 . E-mail: antennas@antcom.com . http://www.antcom.com

NOTICE OF PROPRIETARY RIGHTS
THIS DOCUMENT CONTAINS CONFIDENTIAL, TECHNICAL DATA INCLUDING TRADE SECRETS PROPRIETARY TO ANTCOM CORP. DISCLOSURE OF THIS DATA TO YOU IS EXPRESSLY CONDITIONED UPON YOUR ASSENT THAT ITS USE IS LIMITED TO USE WITHIN YOUR COMPANY ONLY (AND DOES NOT INCLUDE MANUFACTURE OR PRODUCTION) AND ANY OTHER USE IS EXPRESSLY PROHIBITED WITHOUT PRIOR WRITTEN CONSENT OF ANTCOM CORP.

SPECIFICATIONS

| REVISIONS | | | | |
|-----------|-----|---------------------|------------|----------|
| ZONE | REV | DESCRIPTION | DATE | APPROVED |
| A | | 3dB More In Gain | Sep-21-06 | S.H |
| B | | With LNA and Filter | July-01-09 | S.H |

ELECTRICAL:

| | | |
|-----------------------|--|---------------|
| FREQUENCY: | L1: (1575.42 ±12) MHz (Tuned on VS-050A-01Rev. - Housing) | |
| RADIATION PATTERN: | HEMISPHERICAL | |
| POLARIZATION: | RHCP | |
| VSWR: | < 1.5:1 | |
| IMPEDANCE: | 50 ohms | |
| ANTENNA GAIN (dBi): | Free Space | 3 in G.P. |
| | @ 90° (ZENITH): | - 0.8 + 3.8 |
| | @ 10° Elevation: | - 9.3 - 4.3 |
| | @ 20° Elevation: | - 6.8 - 2.2 |
| | @ 30° Elevation: | - 5.2 - 0.7 |
| | @ 60 - 90° Elevation: | > - 2.1 > 2.5 |
| BEAM WIDTH (3dB): | 100 Deg. | |
| AXIAL RATIO: | 2.5 dB | |
| LIGHTNING PROTECTION: | DC GROUNDING | |

LNA OPTION:

| | |
|-------------------|--|
| LNA GAIN: | 24.0 dB |
| LNA NOISE FIGURE: | 1.8 dB |
| LNA P 1dB Out: | +16 dBm |
| VOLTAGE/CURRENT: | (+2.8 TO +28) Volts DC / (15 TO 25) mA |
| FILTER: | 2-POLE FILTER (P/N: KFF6338A) |

MECHANICAL:

| | |
|------------|---|
| SIZE: | 1.250 in. [31.75 mm] SQ. |
| HEIGHT: | 0.540 in. [13.59 mm] |
| WEIGHT: | 1.05 oz. (30 g) |
| FINISH: | SKYDROL RESISTANT POLYURETHANE ENAMEL BASE IRIDIUM PER MIL-C-5441 |
| MATERIAL: | 6061-T6 ALUMINUM ALLOY BASE COMPOSITE RADOME, ABRASION, UV, SOLVENT, SKYDROL RESISTANCE, AND FIRE RETARDANT |
| CONNECTOR: | 6" LONG FLEXIBLE CABLE with RIGHT ANGLE MCX (OPTION: MCX, SMA, SMB, SSMA, SSMB, SSMC, OR TNC) |

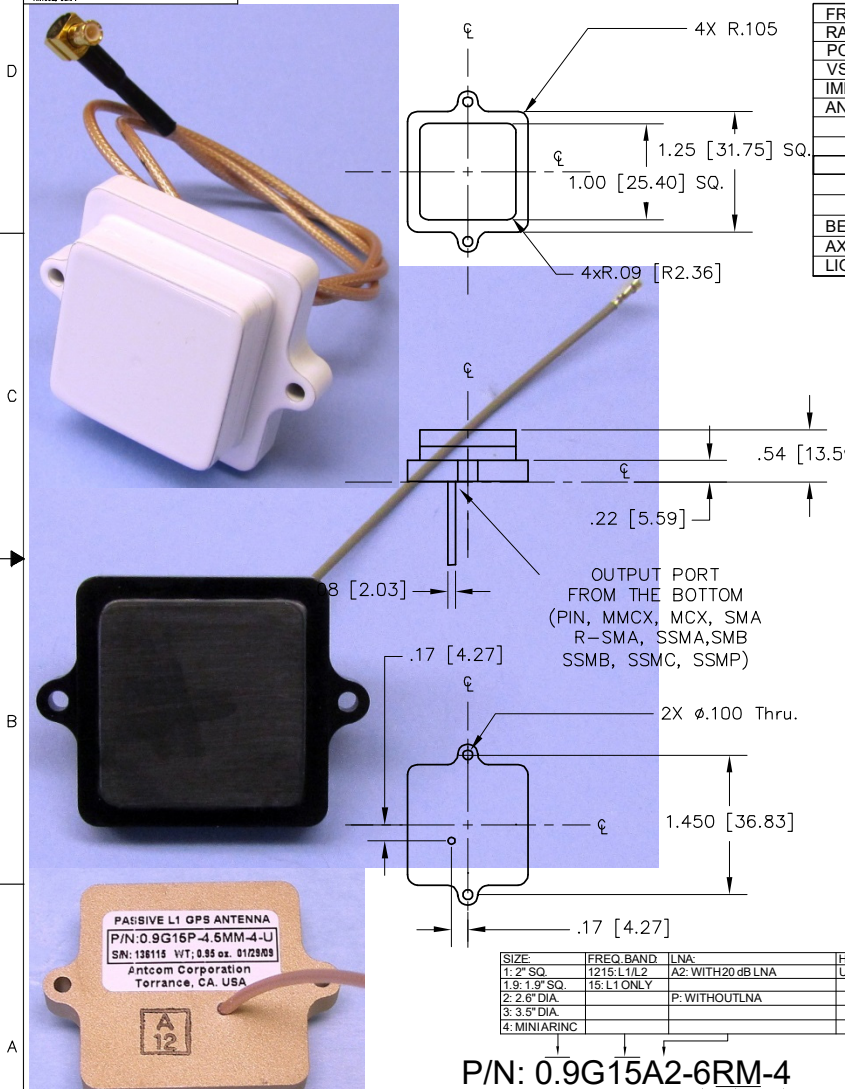
ENVIRONMENTAL:

| | |
|--------------|--------------------------------------|
| TEMPERATURE: | -67 °F TO +185 °F [-55 °C TO +85 °C] |
| ALTITUDE: | 70,000 ft. |
| VIBRATION: | >30 G's |
| LEAKAGE: | HERMETICALLY SEAL |

FEDERAL & MILITARY SPECIFICATIONS:

DESIGN TO: FAA TSO-C144, DO-160D, D0-228, MIL-C-5541,
MIL-E-5400, MIL-I-45208A, MIL-STD-810, AND SAE J1455

ACCEPTANCE TEST PROCEDURE: ATP-GPS-L1L2-100



| SIZE | FREQ. BAND | LNA | High Shock/Vibration Options: |
|---------------|-------------|--------------------|-------------------------------|
| 1: 2" SQ. | 1215:L1/L2 | A2: WITH 20 dB LNA | U: 20,000G |
| 1.9: 1.9" SQ. | 15: L1 ONLY | P: WITHOUT LNA | |
| 2: 2.6" DIA. | | | |
| 3: 3.5" DIA. | | | |
| 4: MINIARINC | | | |

P/N: 0.9G15A2-6RM-4

| CABLE LENGTH | CONNECTOR | COLOR |
|----------------------|--|--|
| X: NO CABLE | S: SMA; RS: R-SMA; P: PINS; M: MCX; | -1: GLOSS WHITE #17925 PER FED-STD-595B |
| M: MAG N; NO MAG | MM: MMCX; SMB; SMA; SSMB; SSMC; | -2: LUSTERLESS GRAY #36320 PER FED-STD-595B |
| #: CABLE LENGTH (IN) | SSMP; T: TB; TNC; RMC; RIGHT ANGLE MCX | -3: OLIVE DRAB GREEN #34031 PER FED-STD-595B |
| R: RIGHT ANGLE CON. | L: RMC; Right Angle Male Lemo | -4: LUSTERLESS BLACK #37038 PER FED-STD-595B |

1. DIMENSIONS IN BRACKETS ARE IN MILLIMETERS [mm]

NOTES: UNLESS OTHERWISE SPECIFIED:

| QUANTITY REQD. | DESCRIPTION | PART NO | FINISH | ITEM NO. |
|----------------|----------------------------|----------------|--------|----------|
| 1 | Conductive ADHESIVE GASKET | 123456-3M-0.9G | - | 5 |
| 1 | | | - | 3 |
| 1 | | | - | 2 |
| 1 | | | - | 1 |

| UNLESS OTHERWISE SPECIFIED DIMENSIONS ARE IN INCHES FRACTIONS DECIMALS ANGLES | | ANTCOM CORP. TORRANCE, CALIFORNIA | |
|---|-----------------------------------|-----------------------------------|--|
| 1/64 | .001 ± .001 | DRAWN | |
| | ± .005 | CHECKED | |
| | TOLERANCE 51M PER ANSI Y14.5 | DESIGNED | |
| | BEZEL EXTERNAL EDGES .005 TO .015 | APPROVED | |
| | DRILL SIZES FOR MIL-S-8879 | S. HUYNH | |
| | DRILL SIZES ON A COOPER C-24-006 | July-01-09 | |
| | MACHINED SURFACES | SCALE 1/1 | |
| | DO NOT SCALE DRAWING | SHEET 1 OF 1 | |

NMO Connector Option is Now Available for Some Antennas